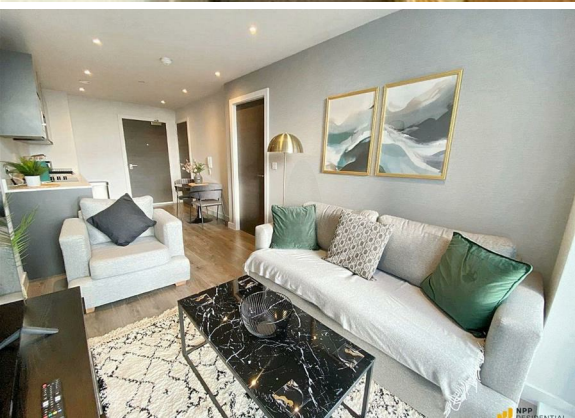




**1 Bed  
Apartment  
located in 96  
Greengate, Salford**

**£1,200 PCM**



 **NPP  
RESIDENTIAL**

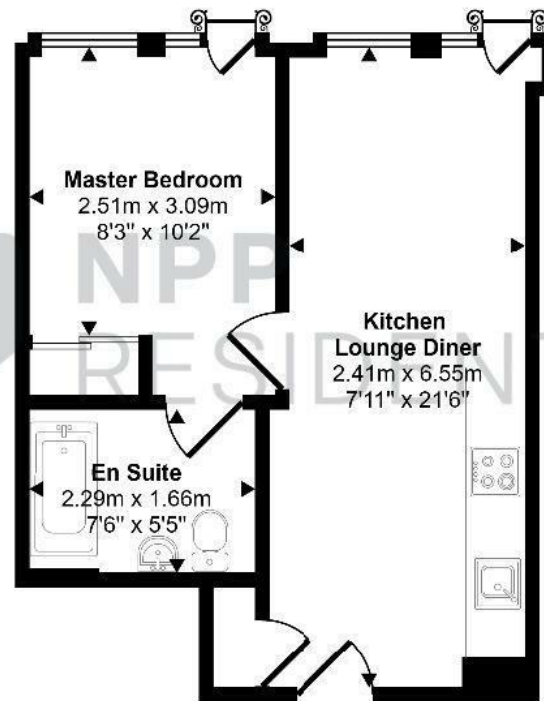
## DIRECTIONS

## CONTACT

22 Lloyd Street  
Manchester  
M2 5WA

E: [info@nppresidential.co.uk](mailto:info@nppresidential.co.uk)  
T: 0161 639 0059  
<https://nppresidential.co.uk/>

Approx Gross Internal Area  
31 sq m / 337 sq ft



Floorplan

This floorplan is only for illustrative purposes and is not to scale. Measurements of rooms, doors, windows, and any items are approximate and no responsibility is taken for any error, omission or mis-statement. Icons of items such as bathroom suites are representations only and may not look like the real items. Made with Made Snappy 360.

EPC Rating:  
Council Tax Band: B

Energy Efficiency Rating		Current	Potential
Very energy efficient - lower running costs			
(92 plus) A			
(81-91) B			
(69-80) C			
(55-68) D			
(39-54) E			
(21-38) F			
(1-20) G			
Not energy efficient - higher running costs			
England & Wales		EU Directive 2002/91/EC	