



Askew Road, W12

£385,000

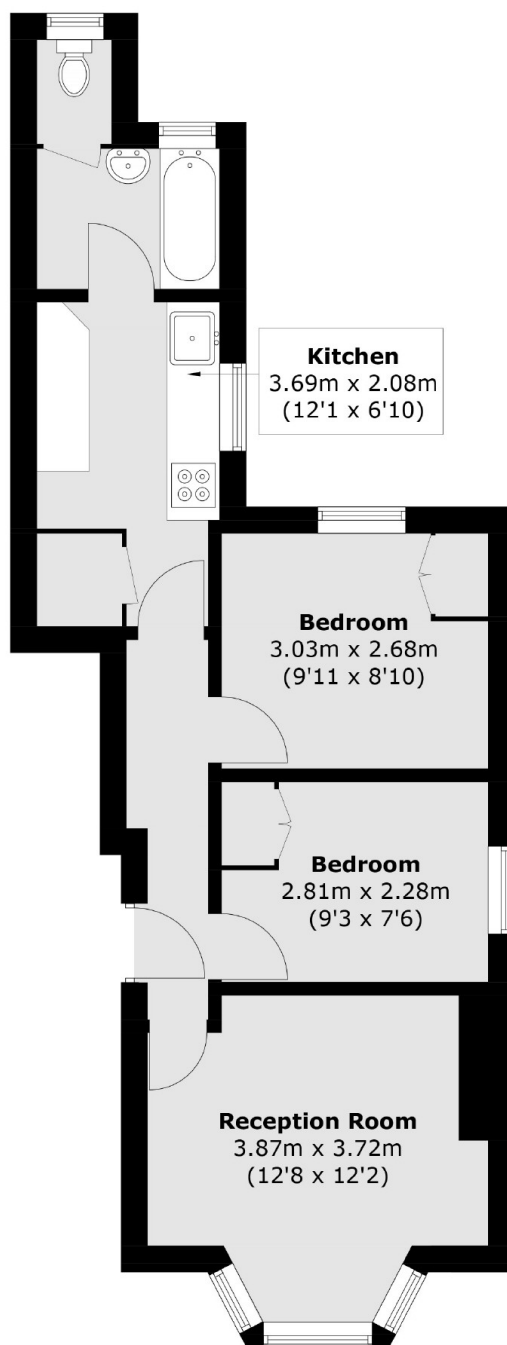
A well presented two bedroom apartment located in the popular Askew Village area. This property on the raised ground floor has a separate kitchen and living room, two double bedrooms and family bathroom. This would make the ideal first time buy or investment as a buy to let.

Located close to Askew Village with many shops, cafes and other amenities. The central, district, hammersmith and city lines are all walking distance and there's easy access in and out the city with the A40.

Features

- Two Bedrooms
- Raised Ground Floor
- Share of Freehold
- Askew Village
- No Chain
- Transport Links

Askew Road, London, W12



Total area (approx.): 45.0 sq. m (484.4 sq. ft)