

# BARTON FLEMING

INDEPENDENT ESTATE AGENTS



**1 Almond Road, Bicester, Oxfordshire. OX26 2HU**

# BARTON FLEMING

INDEPENDENT ESTATE AGENTS

Web: [www.bartonfleming.co.uk](http://www.bartonfleming.co.uk)  
E-mail: [info@bartonfleming.co.uk](mailto:info@bartonfleming.co.uk)  
62 North Street, Bicester. OX26 6NF

Tel: Bicester (01869)

## 249922

### 1 Almond Road, Bicester, Oxfordshire. OX26 2HU



**A Two Bedroom Detached Bungalow on a Corner Plot  
with Kitchen, Lounge Diner, Bathroom and  
Front and Rear Gardens**

**FREEHOLD**

**£ 365,000**

- ❖ Timber Ramp to Front Door
- ❖ Entrance Hall
- ❖ Kitchen
- ❖ Lounge Diner
- ❖ Inner Hall
- ❖ Bathroom
- ❖ Two Bedrooms
- ❖ Front Garden and West Facing Rear Gardens
- ❖ Walking Distance to Town Centre plus local shops on Bucknell Road

VIEWING  
APPOINTMENT:

DAY:

TIME:

# BARTON FLEMING

INDEPENDENT ESTATE AGENTS

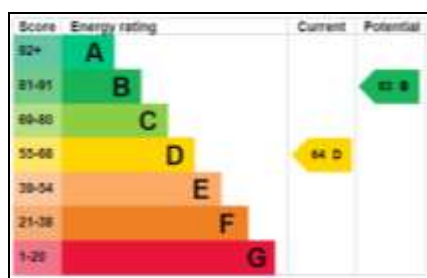
Web: [www.bartonfleming.co.uk](http://www.bartonfleming.co.uk)  
E-mail: [info@bartonfleming.co.uk](mailto:info@bartonfleming.co.uk)  
62 North Street, Bicester. OX26 6NF

Tel: Bicester (01869)

## 249922

### Key Facts for Buyers:

EPC: Rating of D (64).



**Council Tax:** Band D  
Approx. £2,464 per annum.

### Bungalow:

Disabled access timber ramp to part leaded light PVC front door, opening to:

**ENTRANCE HALL:** 5'11 x 11'3  
(including airing cupboard)

Front aspect leaded light glazed windows either side of front door, digital central heating thermostat, radiator, airing cupboard, built-in cupboard, BT master socket.

**KITCHEN:** 11'3 x 8'5

Front aspect leaded light PVC window, side aspect half glazed PVC door, built-in larder, radiator, vinyl flooring. Dated range of base and eye level units, 600mm base unit, 1400mm space for appliance, 1200mm base unit with two 600mm doors, stainless steel sink, space of 500mm cooker, 600mm base unit, space for upright fridge freezer.

**LOUNGE DINER:** 16'11 x 11'11

Rear aspect PVC window, side aspect PVC inward opening French doors, coving, two radiators, fireplace with wooden mantle, tiled hearth and surround, with inset electric fire.

**INNER HALL:**

Access to loft space.

**BATHROOM:** 8'3 x 5'8

Twin front aspect leaded PVC windows, vinyl flooring, heated towel rail, panel enclosed bath with "Bristan" shower over, aqua panel surround, sliding head support, screen, pedestal wash hand basin, shaver socket, close coupled WC, half tiled walls.

**BEDROOM ONE:** 13'11 x 8'9 plus built-in cupboard

Rear aspect PVC window, radiator, built-in cupboard.

**BEDROOM TWO:** 10'0 x 8'9

Front aspect PVC window, radiator.

### Outside:

**FRONT GARDEN:** refer to photograph  
Outside tap.

**REAR GARDEN:** refer to photographs  
Patio, 276<sup>0</sup> magnetic west, getting the sun from the south and west.

### Agents Note:

The block paving in the front garden is wider than a driveway and about 2-3 cars long. However, there is no dropped kerb and it appears not to be formal parking. The top of the highway kerb and the road surface are almost through.

# BARTON FLEMING

INDEPENDENT ESTATE AGENTS

Web: [www.bartonfleming.co.uk](http://www.bartonfleming.co.uk)  
E-mail: [info@bartonfleming.co.uk](mailto:info@bartonfleming.co.uk)  
62 North Street, Bicester. OX26 6NF

Tel: Bicester (01869)

## 249922



Entrance Hall



Entrance Hall



Kitchen



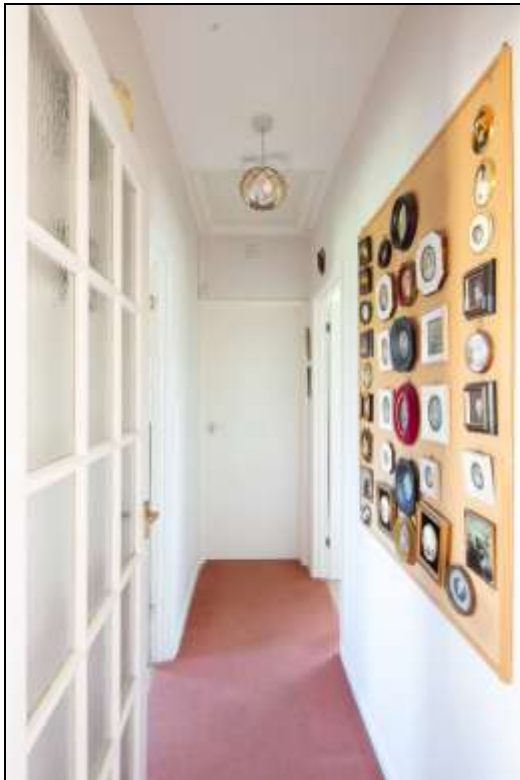
Kitchen



Kitchen



Bathroom



Inner Hall

# BARTON FLEMING

INDEPENDENT ESTATE AGENTS

Web: [www.bartonfleming.co.uk](http://www.bartonfleming.co.uk)  
E-mail: [info@bartonfleming.co.uk](mailto:info@bartonfleming.co.uk)  
62 North Street, Bicester. OX26 6NF

Tel: Bicester (01869)

## 249922



Lounge Diner



Lounge Diner



Lounge Diner



Bedroom One



Bedroom One



Bedroom One



Bedroom Two



Bedroom Two

# BARTON FLEMING

INDEPENDENT ESTATE AGENTS

Web: [www.bartonfleming.co.uk](http://www.bartonfleming.co.uk)  
E-mail: [info@bartonfleming.co.uk](mailto:info@bartonfleming.co.uk)  
62 North Street, Bicester. OX26 6NF

Tel: Bicester (01869)

## 249922



Rear Garden



# BARTON FLEMING

INDEPENDENT ESTATE AGENTS

Web: [www.bartonfleming.co.uk](http://www.bartonfleming.co.uk)  
E-mail: [info@bartonfleming.co.uk](mailto:info@bartonfleming.co.uk)  
62 North Street, Bicester. OX26 6NF

Tel: Bicester (01869)

**249922**

**Space for Notes**

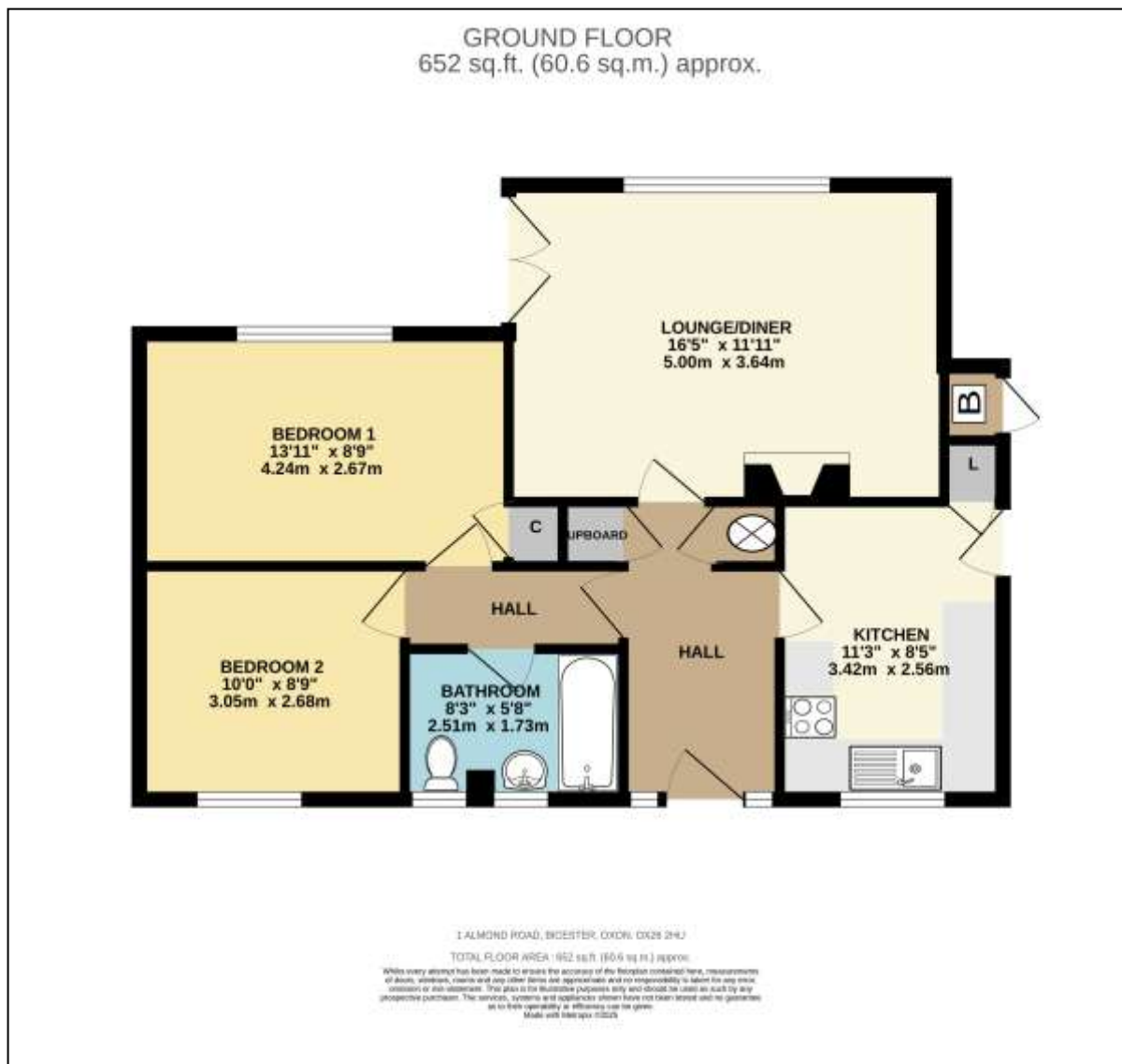
# BARTON FLEMING

INDEPENDENT ESTATE AGENTS

Web: [www.bartonfleming.co.uk](http://www.bartonfleming.co.uk)  
E-mail: [info@bartonfleming.co.uk](mailto:info@bartonfleming.co.uk)  
62 North Street, Bicester. OX26 6NF

Tel: Bicester (01869)

249922



These particulars do not constitute any part of an offer or a contract. Whilst every care has been taken to ensure accuracy, no responsibility for errors or mis-description is accepted. Any intending purchaser must satisfy himself by inspection or otherwise as to the correctness of each of the statements in these particulars. The vendor does not make or give and neither Barton Fleming nor any person in their employment, has authority to make or give any representation or warranty whatsoever in relation to this property. Land Registry Plans are provided as guidance only and while LRP documents are generated from what is registered at the point at when the plans are downloaded for use in these particulars they are not guaranteed to represent the property title at any given moment. Buyers should satisfy themselves through their solicitor as to the accuracy of the land registration at any given moment.