



Netherhall Gardens

Hampstead, NW3

£3,350 per month
(£773.08 per week)

VIDEO TOUR AVAILABLE. A stunning 2 double bedroom 1st floor apartment with wood floors, carpets in the bedroom, high ceilings, plenty of storage and communal gardens. The property is situated in a premier road in Hampstead, walking distance to the amenities of Finchley Road (Jubilee Line). Accommodation comprises grand reception room, semi open plan newly refurbished fully fitted kitchen, master bedroom with triple aspect, fitted wardrobes and en-suite shower room and loft storage, single bedroom/study with fitted wardrobes, family bathroom. The shower room and family bathroom are now finished and they have been interior designed and renovated to an excellent standard. Sole Agent.

CHESTERTONS



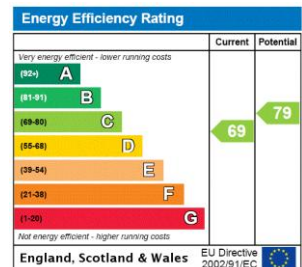
Netherhall Gardens

Hampstead, NW3

- A Stunning 1st Floor Apartment in Period Conversion
- 2 Bedrooms, 2 Bathrooms, Reception, Fully Fitted Kitchen
- Wood Floors, High Ceilings, Loft Storage, Communal Garden
- Situated in Premier Road in Hampstead



Deposit Required: £3,865.38
Local Authority: London Borough Of Camden (Cheque)
Council Tax Band: F
EPC Rating: C
Unfurnished



Chestertons Hampstead Lettings

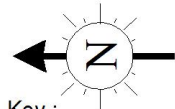
55-56 Hampstead High Street
 Hampstead
 London
 NW3 1QH
 hampsteadlettingsusers@chestertons.co.uk
 02077941125
 chestertons.co.uk

Additional tenant charges apply (fees apply to non-AST tenancies only)
 Tenancy Agreement Fee: £300
 References per Tenant/Guarantor: £60
 Inventory check (approx. £100 – £250 inc. VAT)
chestertons.co.uk/property-to-rent/applicable-fees

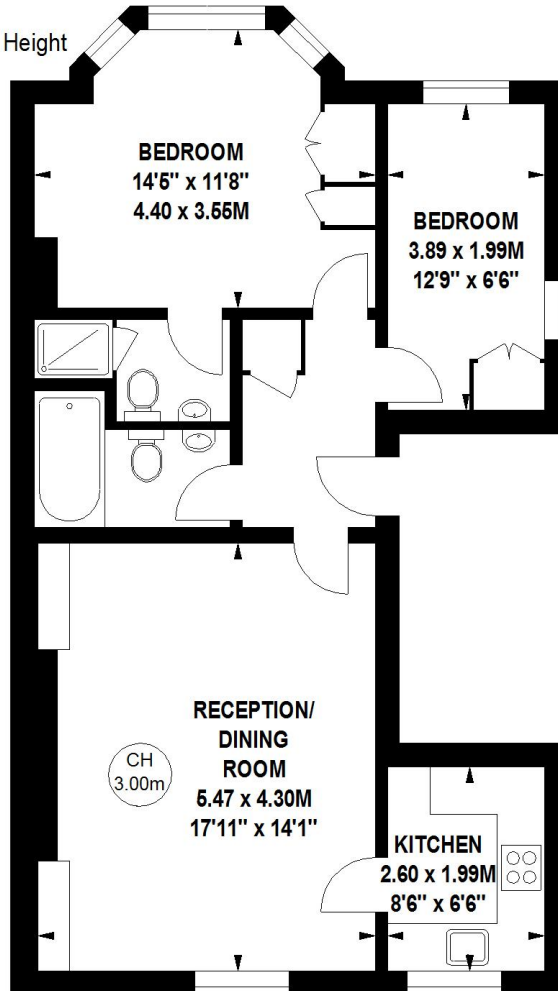
Netherhall Gardens, NW3

Approximate gross internal area

64.47 sq m / 694 sq ft



Key :
CH - Ceiling Height



First Floor

The floor plan is not to scale and measurements and areas shown are approximate and therefore should be used for illustrative purposes only. The plan has been prepared in accordance with the RICS code of Measuring Practice and whilst we have confidence in the information produced, it must not be relied on.

If there is any aspect of particular importance, you should carry out or commission your own inspection of the property.

Copyright of FeaturePRO.

