



## Chalmers Way, TW1

£2,775 Per calendar month

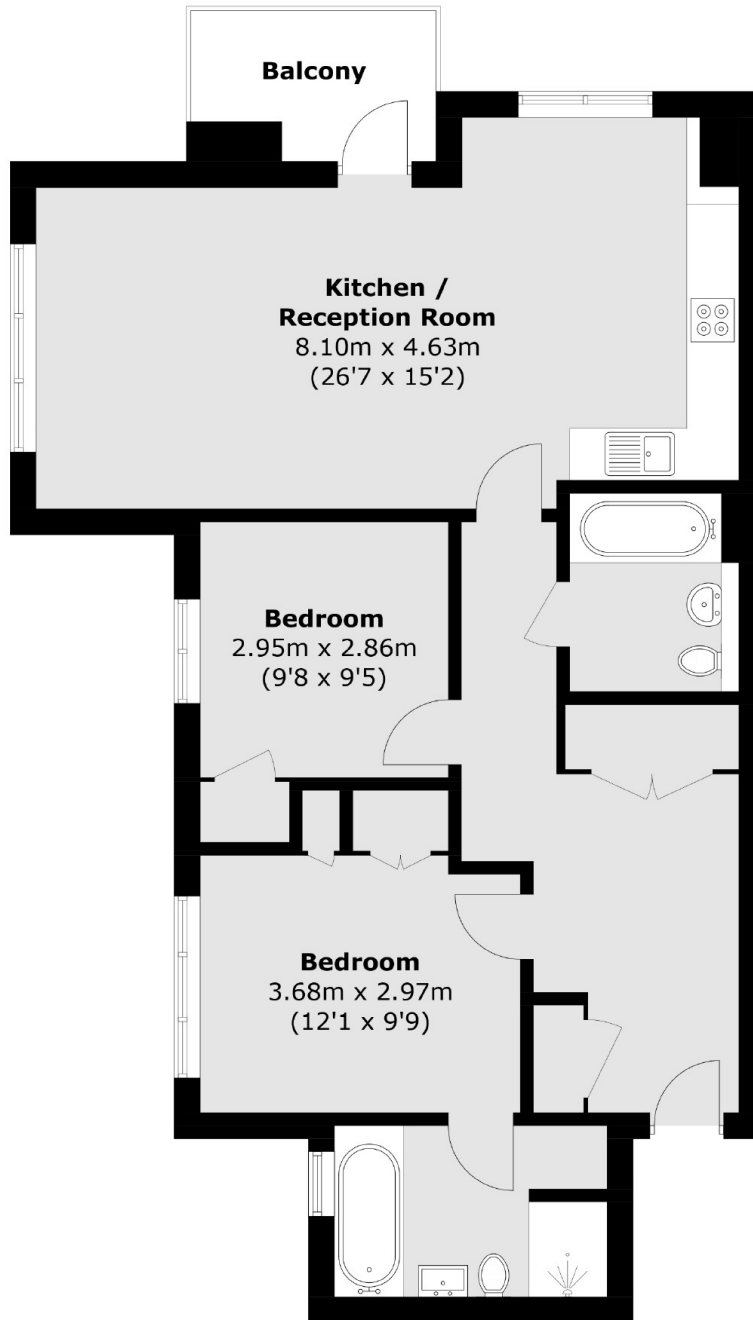
A beautifully presented two double bedroom apartment located within this modern development at Richmond Lock. Finished to an excellent standard the property has large open-plan living room and a modern kitchen. Other features include a large family bathroom, an en suite bathroom, a private balcony and secure underground parking.

The Richmond Lock development is ideally located for those requiring easy access in and out of London via the A316/M3. St Margarets village enjoys a wide variety of shops, cafes with both Richmond and Twickenham town centres close by.

### Features

- Popular Development
- Two Double Bedrooms
- Private Balcony
- Underground Parking
- Exclusive Apartment
- Two Bathrooms

Chalmers Way,  
Twickenham, TW1



Total area (approx.): 82.9 sq. m (892.3 sq. ft)  
Balcony: 4.9 sq. m (52.7 sq. ft)