

Property ref: 51462

The Mews, High Street, Sonning, RG4 6UP

£1,950 PCM

HASLAM'S
Lettings



A stunning three bedroom, Mews style house located in the popular village of Sonning.
Wokingham Borough Council tax band E.
Broadband/Mobile Info: Connections available. For an indication of specific speeds and supply of Broadband and Mobile, we advise applicants go to the Ofcom website Broadband and Mobile Coverage Checker.

Available 01/06/2026

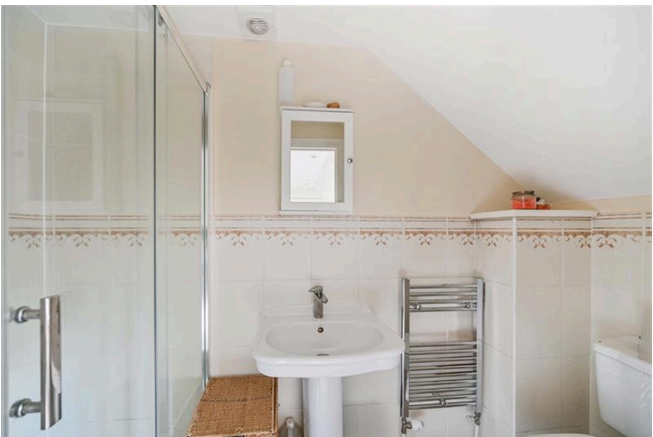
- Three double bedrooms; Master with en-suite
- Fully fitted kitchen with appliances
- Bathroom with shower over bath
- Gas central heating
- Allocated parking; EPC rating C
- Unfurnished; Managed by LANDLORD

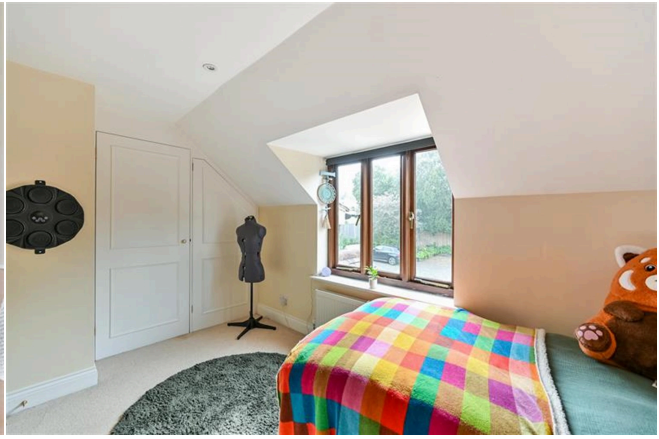
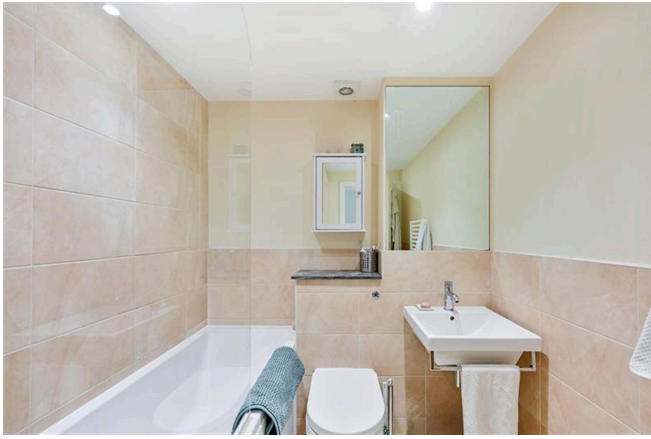
*Fees For Assured Shorthold Tenancies: when you rent a property from us you will be required to pay a sum equivalent to one weeks' rent for a holding deposit. Upon successful application, this amount will be off set against your first months' rent. You will also be required to pay a security deposit equivalent to 5 weeks' rent which will be held and protected in line with Deposit legislation. For more information about our fees please visit: www.haslams.net
Fees for all other tenancies (Non Housing Act Tenancies / Company Lets): when you rent a property from us we will charge you a one-off fee per property. This charge is the equivalent of 15 days of the monthly rental charge (+VAT) with a minimum fee of £450 (inc.VAT) up to a maximum of £650 (inc.VAT). Other fees may apply depending on your circumstances.

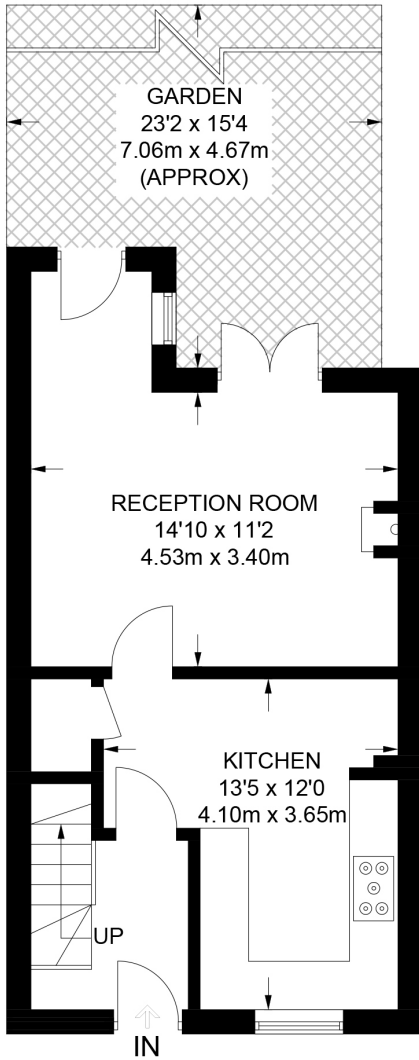
0118 960 1055

lettings@haslams.net www.haslams.net

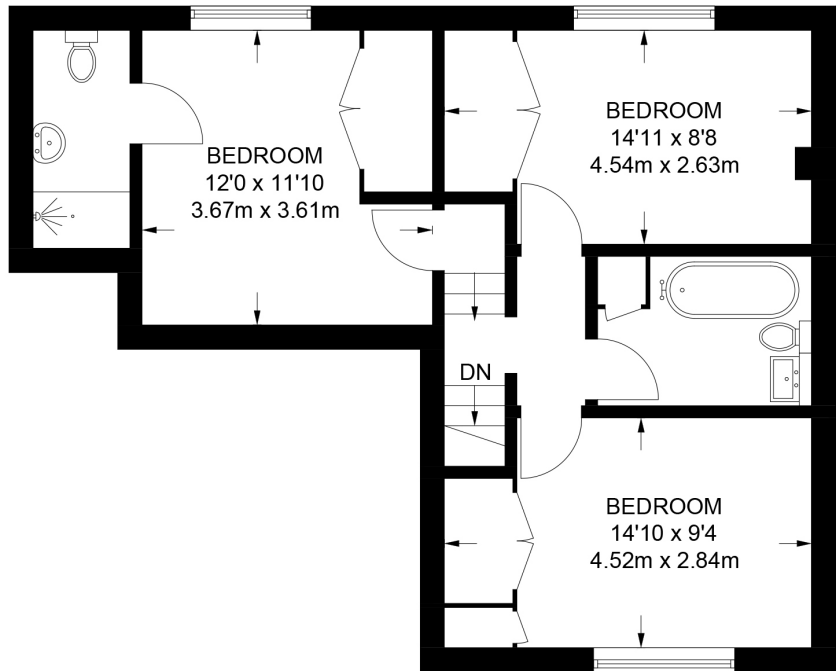
Haslams Estate Agents Ltd, 159 Friar Street, Reading, Berkshire, RG1 1HE







GROUND FLOOR
404 SQ FT / 37.5 SQ M



FIRST FLOOR
561 SQ FT / 52.1 SQ M

APPROXIMATE GROSS INTERNAL AREA
965 SQ FT / 89.6 SQ M

This plan has been drawn for illustrative and identification purposes only.