



7 Parkway, Westhoughton
£385,000

Miller Metcalfe
Every step of the way

7 Parkway

Westhoughton, Bolton

Set on a prime plot in the highly sought-after Parkway, Westhoughton, this modern detached home offers space, style, and an unbeatable position. Boasting external space to the front, side, and rear, plus a driveway for multiple vehicles, it's perfect for family living! Inside, a welcoming entrance leads to a spacious, light-filled lounge and dining area and conservatory with patio doors opening out onto the rear garden. A private study by converting the garage, and a contemporary kitchen/diner. A utility room and guest WC complete the ground floor. Upstairs features a generous master bedroom with en-suite, two further doubles, a single bedroom, and a family bathroom. The private rear garden is not overlooked, offering astro turfed and stoned areas ideal for relaxing or entertaining. Located in the popular Daisy Hill area, close to schools, transport links, and local amenities—this is a fantastic family home, within a great community, not to be missed!

Council Tax band: D

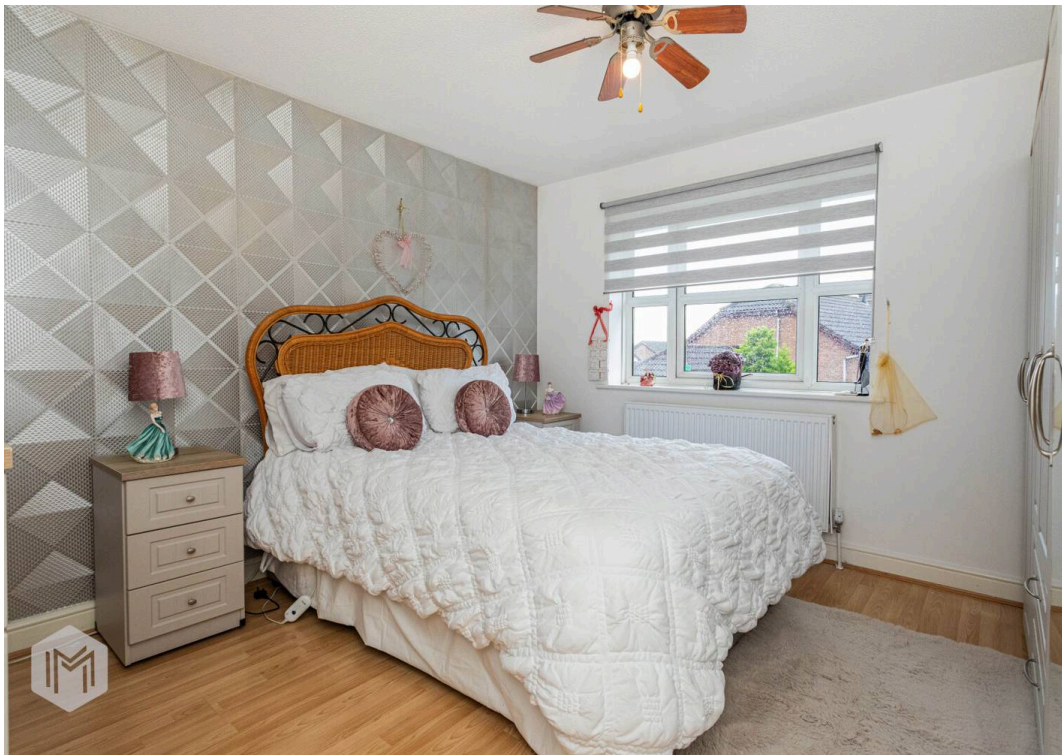
Tenure: Freehold

EPC Energy Efficiency Rating: C

EPC Environmental Impact Rating: C

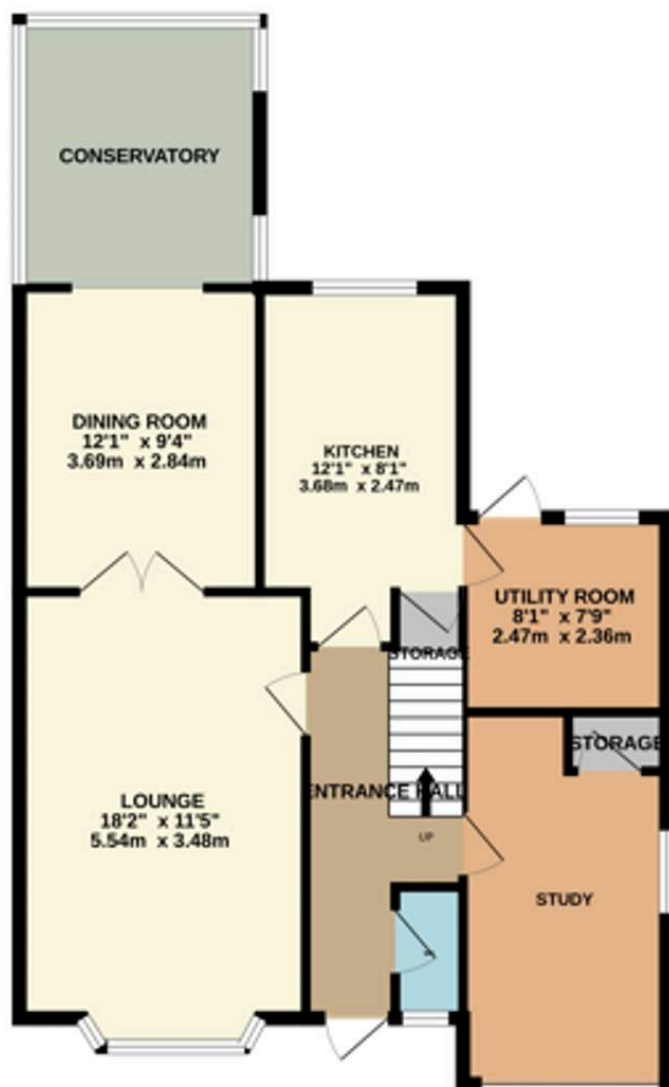








GROUND FLOOR
803 sq ft. (74.8 sq m.) approx.



1ST FLOOR
514 sq ft. (47.7 sq m.) approx.



TOTAL FLOOR AREA : 1319 sq ft. (122.5 sq m.) approx.

Whilst every attempt has been made to ensure the accuracy of the floorplan contained here, measurements of doors, windows, rooms and any other items are approximate and no responsibility is taken for any error, omission or mis-statement. This plan is for illustrative purposes only and should be used as such by any prospective purchaser. The services, systems and appliances shown have not been tested and no guarantee as to their operability or efficiency can be given.

Made with letrotopa ©2025



Miller Metcalfe - Bolton

Miller Metcalfe, 2-10 Bradshawgate - BL1 1DG

01204 535353 • bolton@millermetcalfe.co.uk • millermetcalfe.co.uk/

Miller Metcalfe
Every step of the way