



Haere Mai , Rhydyfelin
Aberystwyth Ceredigion SY23 4QD
Guide price £380,000



FOR SALE BY PRIVATE TREATY

A wonderful opportunity to acquire a detached 5 bedroomed home with a large garden in a sought-after edge of town location.

Rhydyfelin is but 2 miles south of Aberystwyth, convenient to the cycle path and bus routes. Local amenities are available nearby at Penparcau to include the post office, general stores and primary school.

Haere Mai was developed on a large plot approximately 60 years ago and is now in need of some modernisation. The integral garage subject to consent may be converted into additional accommodation if so desired. The large level garden is well worthy of inspection with ample room to extend if necessary.

TENURE

Freehold

SERVICES

Oil fired central heating. Mains services are connected.

COUNCIL TAX

Band F

VIEWING

Strictly by appointment with the sole selling agents; Aled Ellis & Co, 16 Terrace Rd, Aberystwyth. 01970 626160 or sales@aledellis.com

MONEY LAUNDERING REGULATIONS

Successful parties will be required to provide sufficient up to date identification to verify your identity in compliance with the Money Laundering Regulations. For example: - Passport/ Photographic Driving licence and a current utility bill.

Haere Mai provides for the following accommodation which is also highlighted on the attached floor plan. All dimensions are approximate and all images have been taken by a wide-angle lens camera.

GROUND FLOOR

½ Glazed front entrance door to

RECEPTION HALLWAY

Stairs to first floor accommodation, radiator. Under stairs storage areas, cloak cupboard door to garage & door to

LIVING ROOM

18'3 x 11'5 (5.56m x 3.48m)



With window to fore, French doors to side, fireplace, radiator and folding door dividing

DINING ROOM

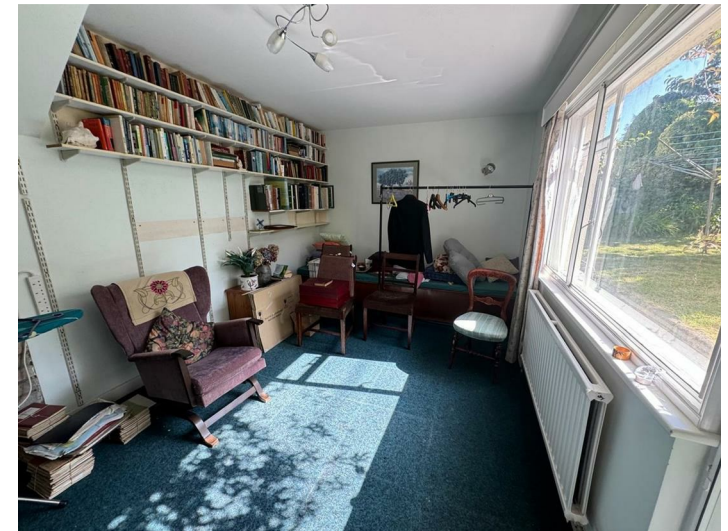
9'5 x 11'8 (2.87m x 3.56m)



With window to rear, radiator.

SITTING ROOM

9'5 x 16'9 (2.87m x 5.11m)



With door and window to rear, radiator.

KITCHEN

9'7 x 9'9 (2.92m x 2.97m)



Comprising of Double bowl sink unit with mixer tap. ZANUSSI Double electric cooker. 4 Ring hob. Base and eye level units tiled splashbacks, cooker point. Fitted cupboard. Door to

UTILITY ROOM

11'1 x 10'7 (3.38m x 3.23m)



Comprising of plumbing for automatic washing machine, oil fired central heating boiler. (as seen) door to rear.

SHOWERROOM

5'2 x 5'6 (1.57m x 1.68m)

With wash handbasin, WC, Shower cubicle. Heated towel rail and wall mounted electric heater.

FIRST FLOOR

LANDING

Access to roof space and access to useful under eaves storage above garage, airing cupboard. Doors to

BEDROOM 1

8 x 9'6 (2.44m x 2.90m)



With window to rear, fitted wardrobe, radiator.

BEDROOM 2

9'7 x 11'7 (2.92m x 3.53m)



With windows to rear and side, fitted wardrobe and radiator.

BEDROOM 3

10'9 x 11'7 (3.28m x 3.53m)



With windows to fore, fitted wardrobe and radiator.

BATHROOM

7'9 x 5'3 (2.36m x 1.60m)



Comprising of bath with mixer tap, WC and wash handbasin. ½ tiled, radiator, cupboard, obscured window to fore. Towel rail.

INTEGRAL GARAGE

9'3 x 17'3 (2.82m x 5.26m)

EXTERNALLY

Gated access to tarmacadamed vehicular hardstanding with access to garage. Large garden to fore and side predominantly laid to lawn with numerous trees and shrubs. Small rear paved patio. Oil tank. Garden shed.



BEDROOM 4

8'2 x 7'7 (2.49m x 2.31m)



Window to fore and radiator.

BEDROOM 5

16'9 x 9'2 (max) (5.11m x 2.79m (max))



With window to rear, fitted wardrobes, vanity unit and radiator.



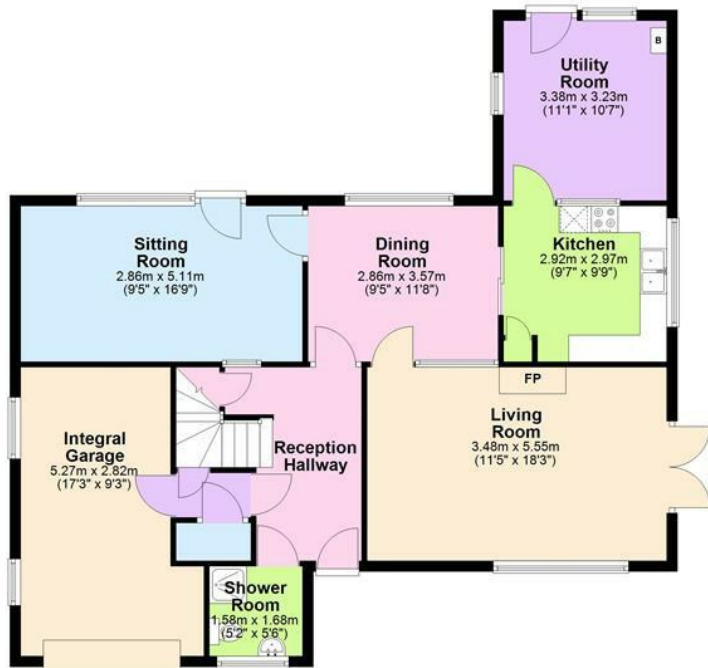
DIRECTIONS

What 3 Words:- ///producers.fired.deduct

Proceed South out of Aberystwyth for 2 miles to Rhydyfelin. Turn left at the crossroads and proceed up the lane & Haere Mai is on your right hand side denoted by a for sale board.



Ground Floor



First Floor

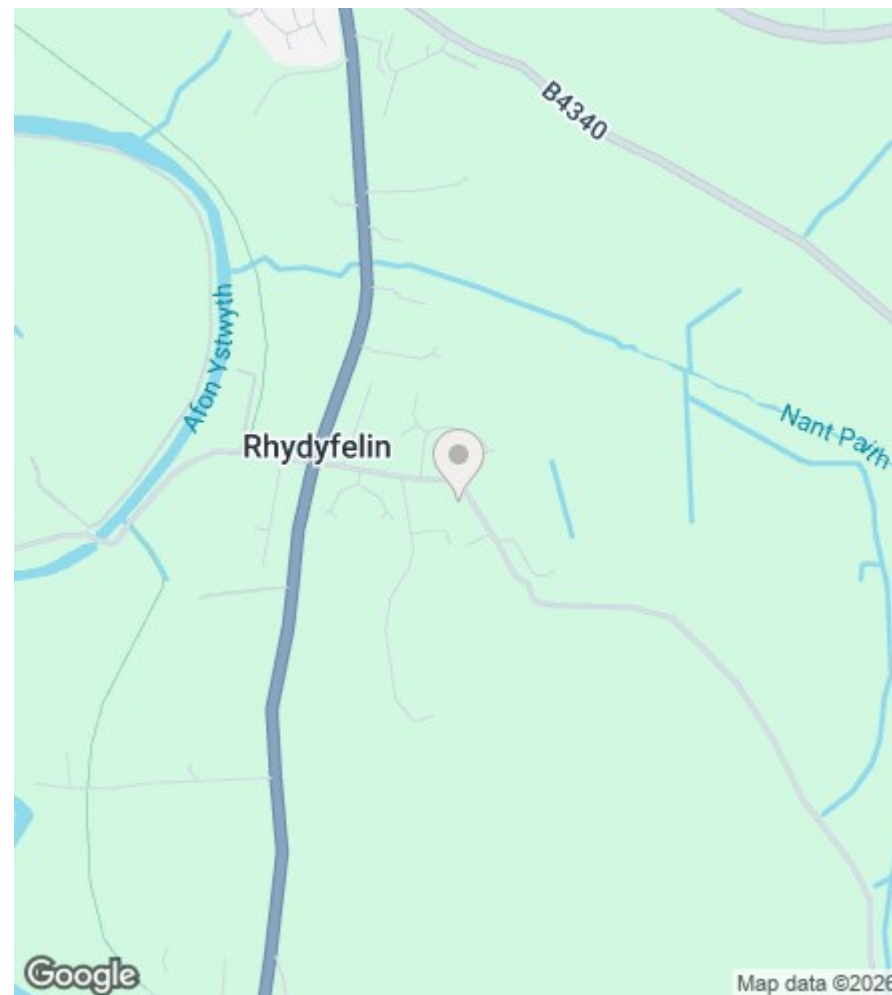


Total area: approx. 175.6 sq. metres (1890.0 sq. feet)

The Floor Plans are for guidance only. Whilst every attempt has been made to ensure the accuracy of the floor plan contained here, measurements of doors, windows, room sizes and any other item are approximate and no responsibility is taken for any error, omission or misstatement.

Plan produced using PlanUp.

Haere Mai, Rhydyfelin, Aberystwyth



Energy Efficiency Rating		Current	Potential
Very energy efficient - lower running costs			
(92 plus) A			
(81-91) B			
(69-80) C			
(55-68) D			
(39-54) E			
(21-38) F			
(1-20) G			
Not energy efficient - higher running costs			
		48	62
England & Wales		EU Directive 2002/91/EC	

Environmental Impact (CO ₂) Rating		Current	Potential
Very environmentally friendly - lower CO ₂ emissions			
(92 plus) A			
(81-91) B			
(69-80) C			
(55-68) D			
(39-54) E			
(21-38) F			
(1-20) G			
Not environmentally friendly - higher CO ₂ emissions			
England & Wales		EU Directive 2002/91/EC	

16 Terrace Road, Aberystwyth, Ceredigion SY23 1NP

Tel/Ffon: 01970 626160

Email/E-Bost: sales@aledellis.com