




**Sackville Gardens  
Hove, BN3 4GJ**

**FERMERS**



- 3 
- 2 
- 1 


**TENURE**  
Leasehold

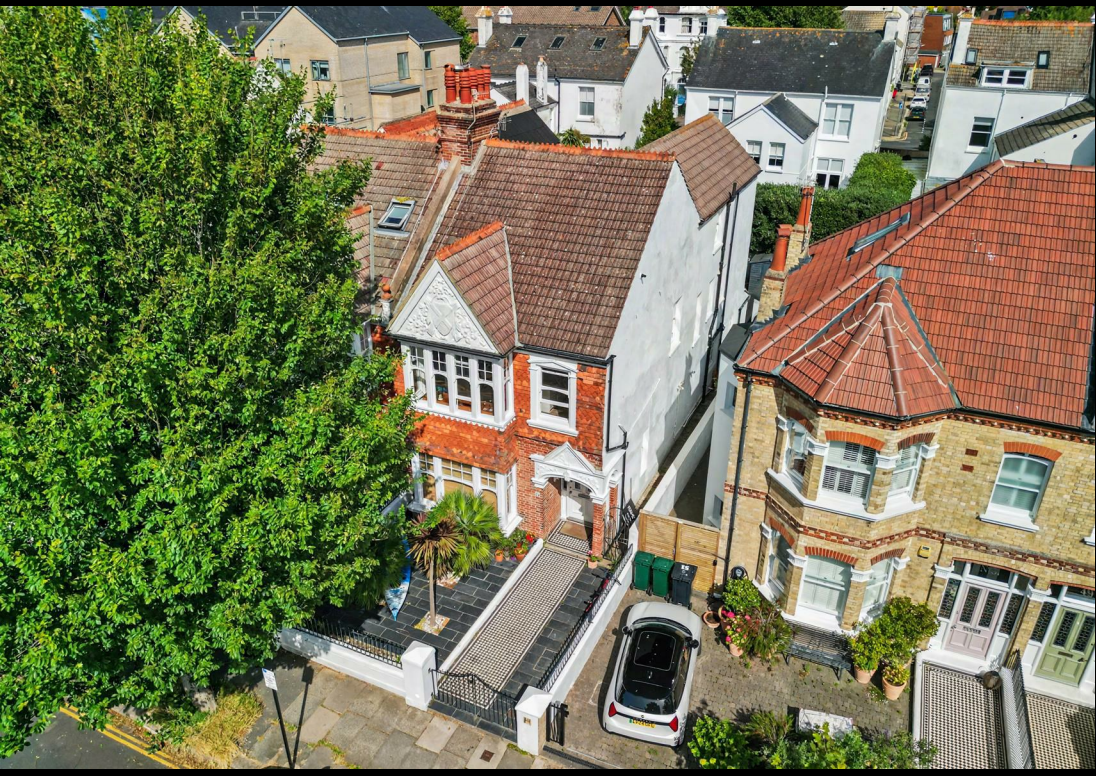
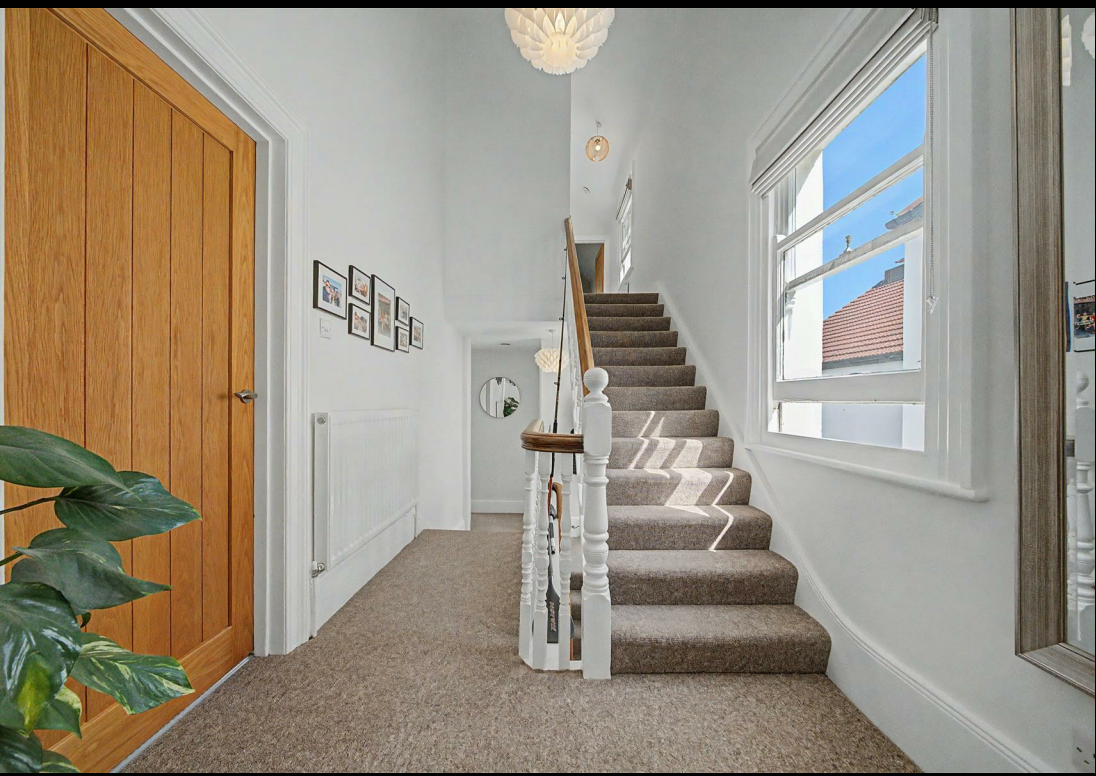
**EPC RATING**  
E

**COUNCIL TAX BAND**  
C



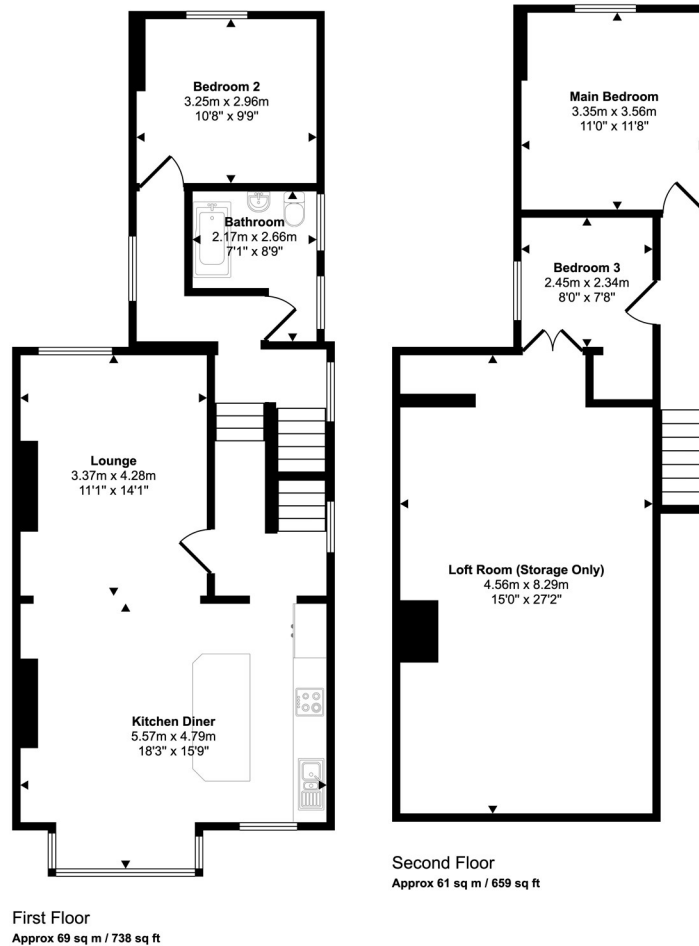
Energy Efficiency Rating		
	Current	Potential
Very energy efficient - lower running costs		
(92 plus) <b>A</b>		
(81-91) <b>B</b>		
(69-80) <b>C</b>		<b>78</b>
(55-68) <b>D</b>		
(39-54) <b>E</b>	<b>53</b>	
(21-38) <b>F</b>		
(1-20) <b>G</b>		
Not energy efficient - higher running costs		

**England & Wales** EU Directive 2002/91/EC 



# Sackville Gardens

Approx Gross Internal Area  
130 sq m / 1398 sq ft



This floorplan is only for illustrative purposes and is not to scale. Measurements of rooms, doors, windows, and any items are approximate and no responsibility is taken for any error, omission or mis-statement. Icons of items such as bathroom suites are representations only and may not look like the real items. Made with Made Snappy 360.

# FERMERS

## OFFICE ADDRESS

67 Queen Victoria Avenue  
Hove  
East Sussex  
BN3 6XA

## OFFICE DETAILS

01273 541 177  
sales@fermers.co.uk  
www.Fermers.co.uk

Agents Note: Whilst every care has been taken to prepare these particulars, they are for guidance purposes only. All measurements are approximate and are for general guidance purposes only and whilst every care has been taken to ensure their accuracy, they should not be relied upon and potential buyers/tenants are advised to recheck the measurements