



25 Imperial House, Princes Gate Homer Road,
£340,000

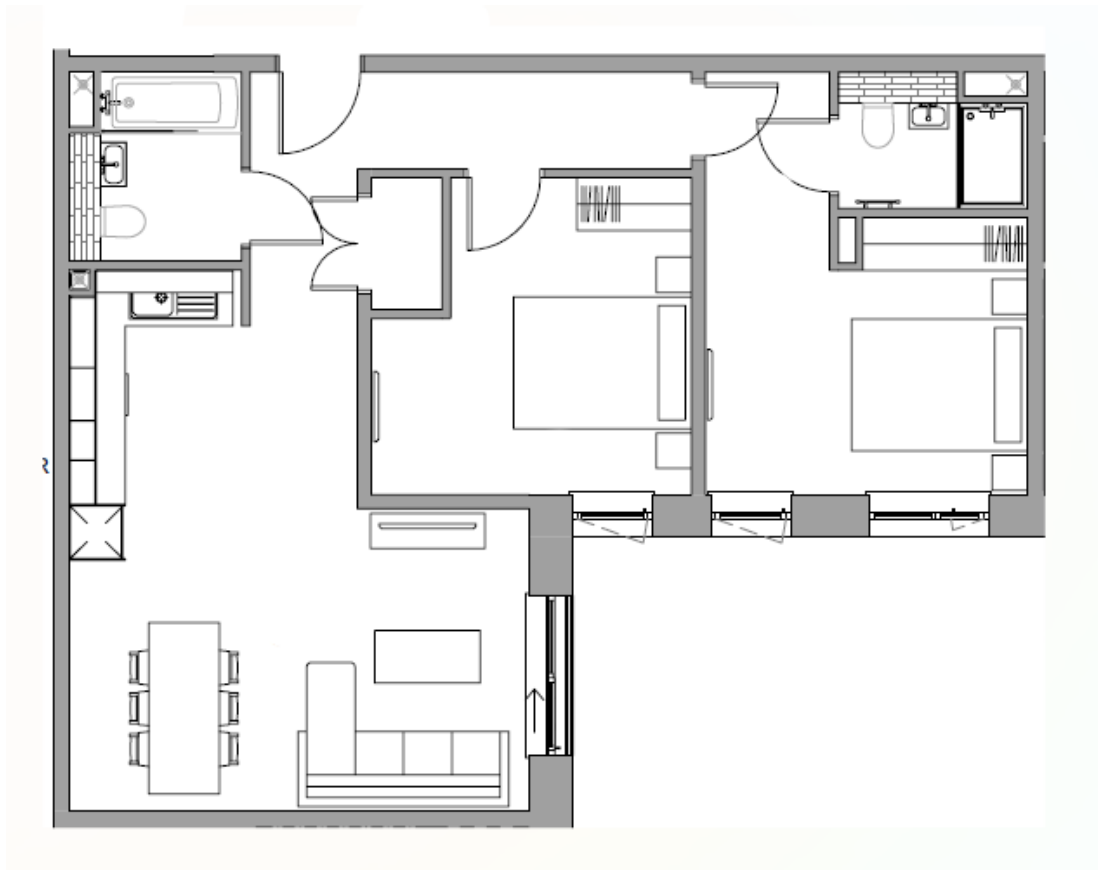
 2  1  0



3 Union Road, Shirley, Solihull B90 3BT

sales • new homes • land • commercial • mortgages • auction

- Two bedroom first floor apartment
- Juliet balcony overlooking the courtyard
- Ensuite in the main bedroom
- Contemporary style family bathroom
- Located in the heart of Solihull
- One allocated parking space
- Modern fitted kitchen with integrated appliances
- Fitted wardrobes in both bedrooms
- Ample storage space throughout the property
- Give us a call today to find out more and book a viewing!



A well-presented two-bedroom first floor apartment in the heart of Solihull, with one allocated parking space. The property offers a bright open plan kitchen/lounge/diner with a Juliet balcony, a modern fitted kitchen with integrated appliances, two bedrooms with fitted wardrobes, an ensuite to the principal bedroom, and a contemporary family bathroom. Ideal for first-time buyers, professionals, or investors, with easy access to local amenities and transport links.

3 Union Road, Shirley, Solihull B90 3BT

sales • new homes • land • commercial • mortgages • auction