



**Addison**  
ESTATE AGENTS



5 Burgundy Close, Locks Heath, Southampton, Hampshire, SO31 6PS

**£350,000 Freehold**

**\*\* LARGE CORNER PLOT GARDEN WITH VEHICULAR ACCESS \*\* DOWNSTAIRS CLOAKROOM \*\* MODERN KITCHEN & BATHROOM \*\*** Tucked away in a peaceful cul-de-sac, this well-presented three-bedroom home in Burgundy Close, Locks Heath, offers spacious living and an impressive outdoor space rarely found at this level.

Upon entering, you are welcomed into a bright entrance area that provides access to a convenient downstairs cloakroom. The ground floor boasts a large dual-aspect L-shaped lounge/dining room, creating an open and airy living space, with access to the kitchen. Both the dining area and kitchen open onto the generous rear garden, allowing plenty of natural light to flood the home.


Upstairs, there are three well-proportioned bedrooms, all serviced by a modern family bathroom. The layout is ideal for families, with each room offering comfortable accommodation and ample storage.

The main feature of this home is the exceptional outdoor space. The rear garden is larger than most for properties of this type, mainly laid to lawn with a raised decking area, perfect for entertaining or relaxing. Side access with double gates from the front driveway offers additional parking potential.

The property benefits from a front driveway and is located within walking distance of the Locks Heath Centre, providing easy access to shops, restaurants, and essential amenities. It is also in catchment for the well-regarded Locks Heath Infant & Junior Schools and Brookfield Secondary School, making it an excellent choice for families.

If you are looking for a home that offers space, convenience, and fantastic outdoor potential, this property is not to be missed. Contact Addison Estate Agents today for more information or to arrange a viewing.



Energy Efficiency Rating		Current	Potential
<i>Very energy efficient - lower running costs</i>			
(92 plus)	A		
(81-91)	B		82
(69-80)	C		
(55-68)	D	62	
(39-54)	E		
(21-38)	F		
(1-20)	G		
<i>Not energy efficient - higher running costs</i>			
<b>England &amp; Wales</b>		EU Directive 2002/91/EC 	

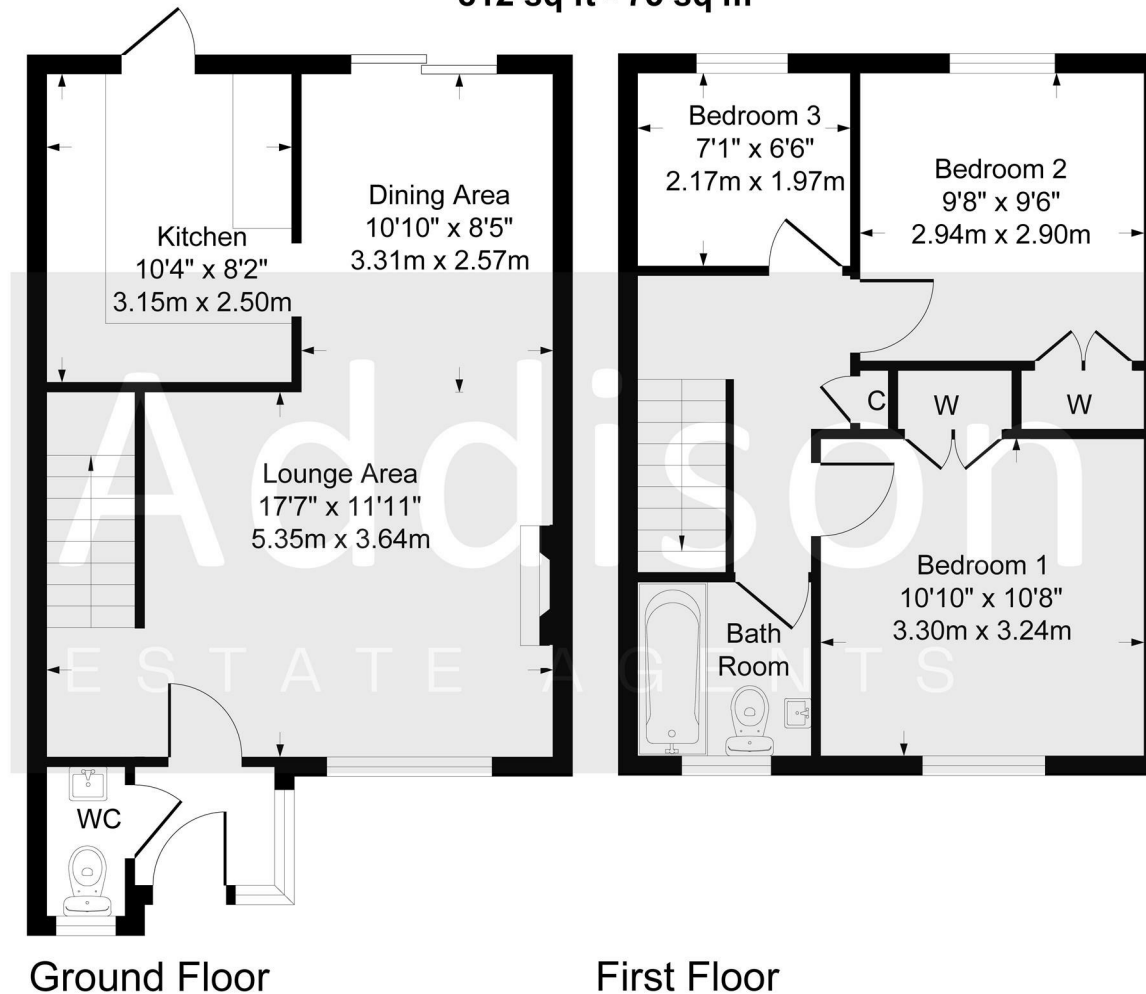
## Further Information

**Local Council:**

**Council Tax Band:**

**C**

**Approximate Gross Internal Area  
812 sq ft - 75 sq m**



- Situated in a quiet and desirable cul-de-sac in Locks Heath
  - Spacious L-shaped dual-aspect lounge/dining room
- Well-proportioned kitchen with direct access to the rear garden
- Three generous bedrooms and a modern family bathroom
- Side access with double gates, providing potential for additional parking
- Large rear garden, with raised decking area
  - Downstairs cloakroom for added convenience
- Within walking distance to Locks Heath Centre
  - Front driveway for off-road parking
- In catchment for Locks Heath Infant & Junior Schools and Brookfield Secondary School

Although every attempt has been made to ensure accuracy, all measurements are approximate.  
This floorplan is for illustrative purposes only and not to scale.  
Measured in accordance with RICS Standards.



**Addison**  
ESTATE AGENTS



01489 668 999



[sales@addisonestateagents.co.uk](mailto:sales@addisonestateagents.co.uk)



[www.addisonestateagents.co.uk](http://www.addisonestateagents.co.uk)