

NEWNEY CLOSE

PORTSMOUTH | HAMPSHIRE | PO2 0UH



£300,000
FREEHOLD

- Three Bedroom End Of Terrace Family Home
- Sought After Cul-De-Sac Location
- Spacious Open Plan Living/dining Room
- Close To Amenities & Transport Links
- Low Maintenance Rear Garden With Garage Access
- Fitted Kitchen With Ample Storage
- Downstairs Cloakroom
- No Forward Chain



In Brief

Situated in the highly sought-after cul-de-sac of Newney Close, this well presented three bedroom end of terrace family home offers spacious accommodation, ideally located close to local amenities, excellent transport links, bus routes, and motorway connections.

The property is approached via a front garden and opens into a welcoming entrance hallway with a convenient cloakroom. The ground floor features a bright and spacious open-plan living and dining area, with sliding doors leading into a conservatory that provides additional living space and views over the rear garden. The fitted kitchen is well equipped and offers ample storage and workspace.

Upstairs, the property boasts two generous double bedrooms, both benefiting from fitted wardrobes, a comfortable single bedroom, and a modern family shower room.

Externally, the rear garden has been designed for low maintenance living, featuring a combination of patio and shingle areas, with direct access to the garage.

Further benefits include double glazing and gas central heating throughout.

This attractive family home would make an ideal purchase for first-time buyers, growing families, or investors alike. Offered with No Forward Chain, early viewing is highly recommended to fully appreciate all that this property has to offer.

£300,000

KEY FACTS

Council Tax Band - C

EPC Rating - D

Freehold



NEWNEY CLOSE

PORTSMOUTH | HAMPSHIRE | PO2 0UH

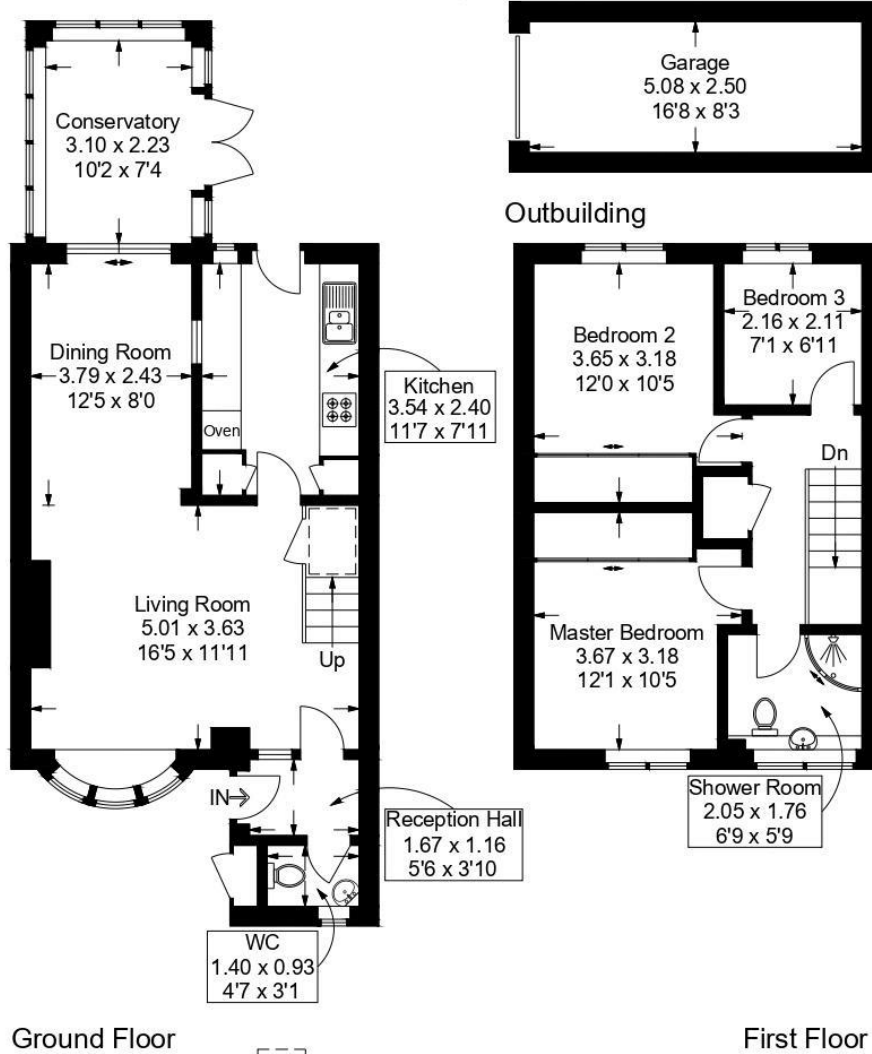


Newney Close, Hilsea

Approximate Gross Internal Area = 87.6 sq m / 943 sq ft

Outbuilding = 10.4 sq m / 112 sq ft

Total = 98 sq m / 1055 sq ft



This plan is for layout guidance only. Not drawn to scale unless stated. Windows and door openings are approximate. Whilst every care is taken in the preparation of this plan, please check all dimensions, shapes and compass bearings before making any decisions reliant upon them.

Southsea
Sales & Lettings
7/9 Stanley Street,
Southsea, PO5 2DS
Tel: 023 9281 5221

Old Portsmouth & Gunwharf Quays
Sales & Lettings
The Seagull, 13 Broad Street,
Old Portsmouth, PO1 2JD
Tel: 023 9281 5221

Drayton & Out of Town
Sales & Lettings
139 Havant Road,
Drayton, PO6 2AA
Tel: 023 9221 0101

London
Sales & Lettings
Mayfair Office, Cashel House,
15 Thayer Street, W1U 3JT
Tel: 0870 112 7099

Southsea
Admin Centre
12 Marmion Road,
Southsea, PO5 2BA
Tel: 023 9282 2300

www.fryandkent.com