

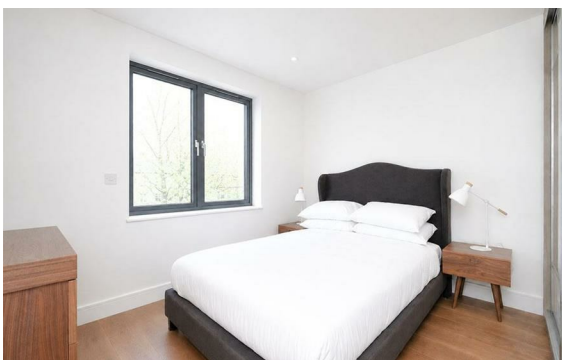
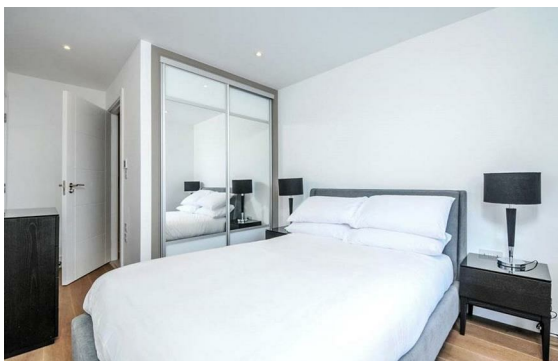
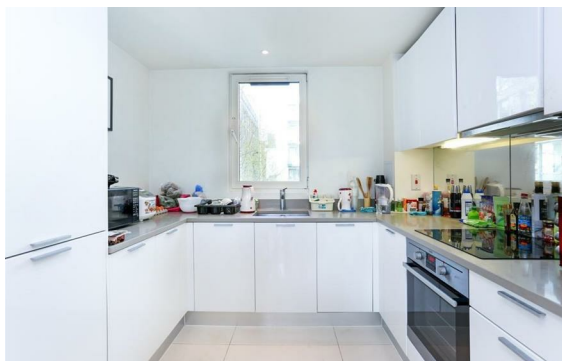


Hermitage Street, Paddington, London, W2

Rent £1,005 Per Month

2 Bed | 2 Bath | 1 Reception

Please call us on 020 7724 2233 or email us info@newingtonstates.com to book a viewing.



A well-presented two-bedroom apartment offering bright interiors and a practical layout in a well-connected central London location. The property features a spacious reception room with wooden flooring and access to a private winter garden, a modern kitchen, and two well-proportioned bedrooms. The principal bedroom benefits from an en-suite shower room, while a separate bathroom serves the second bedroom and guests.

Ideally located close to Paddington Station, Royal Oak Station, and Bayswater Station. The open green spaces of Hyde Park and Kensington Gardens are also within easy reach.

EPC Rating: C

Energy Efficiency Rating: C

Agents Note: Whilst every care has been taken to prepare these particulars, they are for guidance purposes only. All measurements are approximate and are for general guidance purposes only and whilst every care has been taken to ensure their accuracy, they should not be relied upon and potential buyers/tenants are advised to recheck the measurements.

NEWINGTON
— ESTATES —

60 Upper Montagu Street

London

W1H 1SN

020 7724 2233

info@newingtonstates.com

<http://www.newingtonstates.com>