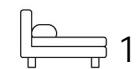




Living
made
better

The Vista Building
Woolwich, SE18 6JF



£1,500 Per Month

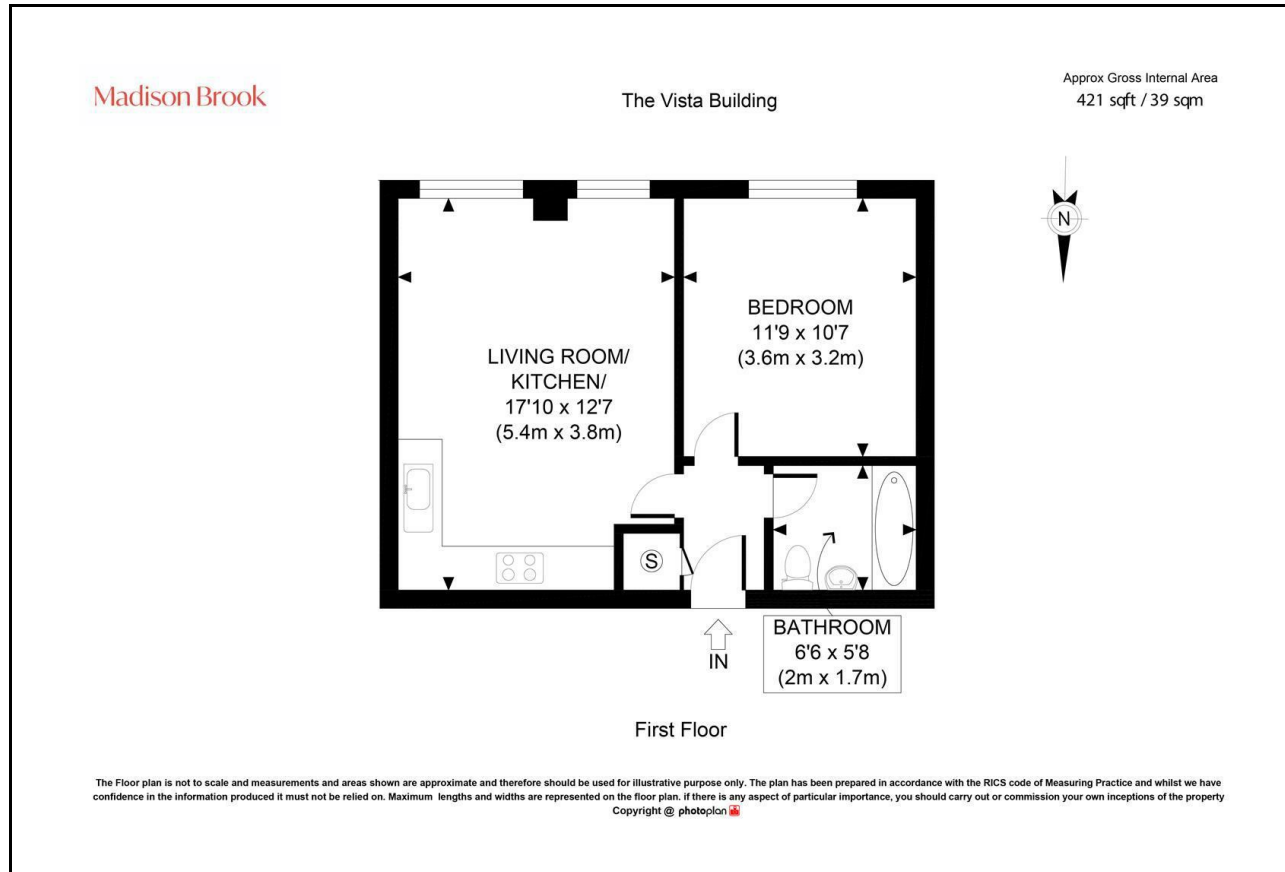
The Vista Building, Woolwich, SE18 6JF

Madison Brook

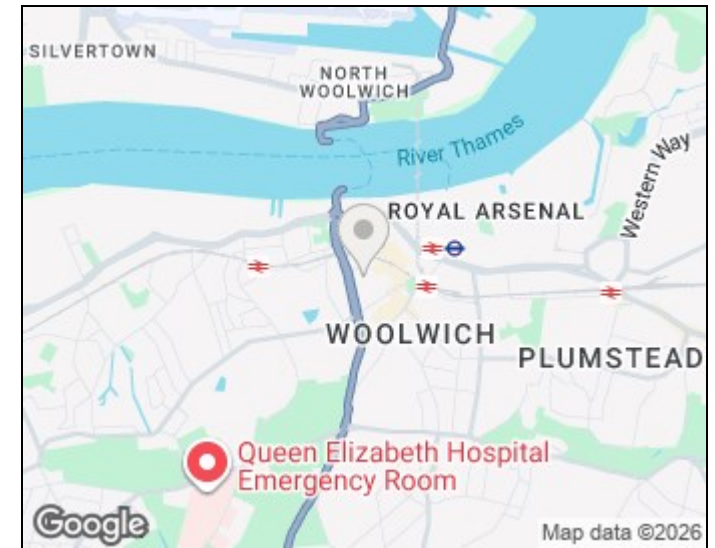
Property Summary

A well-presented one bedroom apartment in The Vista Building offering approximately 421 sq ft of living space, featuring a bright open-plan kitchen/living room and double bedroom. The development benefits from concierge services, and is ideally located 0.2 miles from Woolwich Arsenal Station and 0.3 miles from the Elizabeth Line. Parking available with separate agreement.

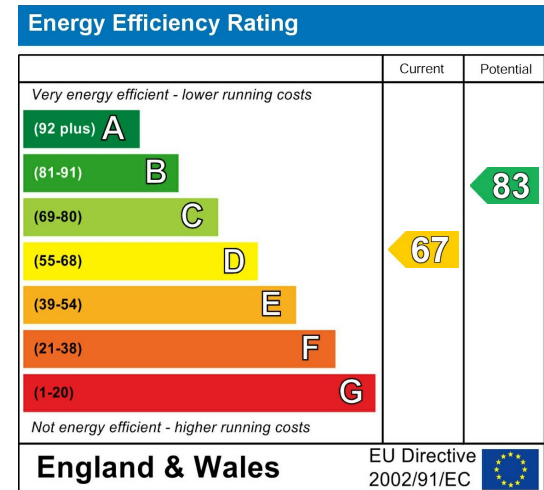
Floorplan



Area Map



Energy Efficiency Graph



These particulars, whilst believed to be accurate are set out as a general outline only for guidance and do not constitute any part of an offer or contract. Intending purchasers should not rely on them as statements of representation of fact, but must satisfy themselves by inspection or otherwise as to their accuracy. No person in this firm's employment has the authority to make or give any representation or warranty in respect of the property.

43 Loampit Vale, Lewisham, London, SE13 7FT

Tel: 020 3946 6200 Email:

lewisham@madisonbrook.com

<https://madisonbrook.com/>