



Endwell Road, SE4 £300,000

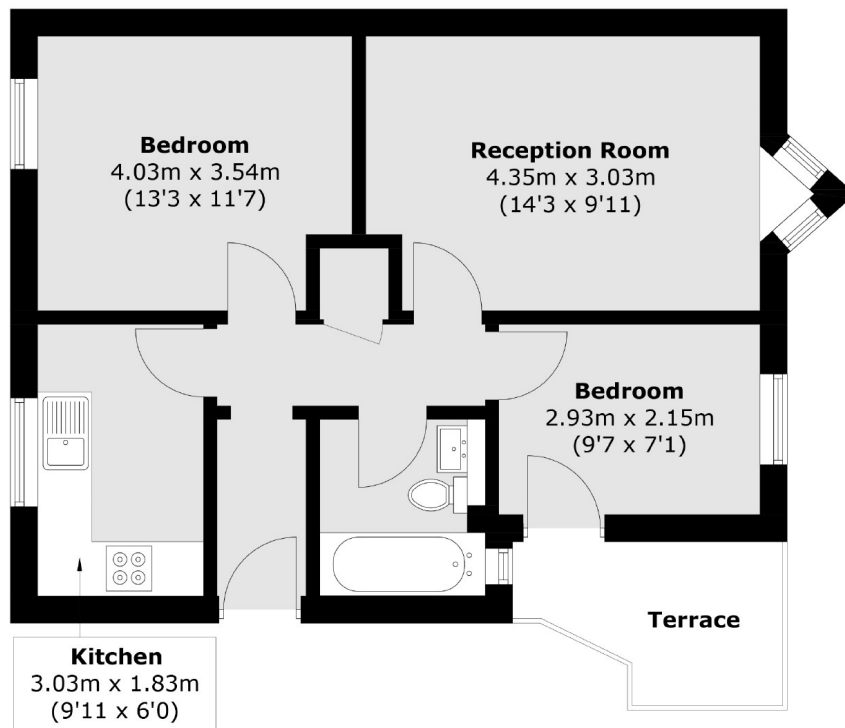
Guide Price £300,000 to £325,000. Fantastic two bedroom apartment located very close to Brockley Overground Station, within a private low rise development and with the benefit of having a long lease and allocated parking.

Stephens Court is brilliantly located for ease of access to local travel and shopping amenities. Brockley Overground/Mainline station is located around 0.1 miles away providing access to Central London within around 20 minutes. Brockley Village is just a short distance further and offers an array of boutique shops, cafes and bars/pubs.

Features

- Two Bedrooms
- Balcony
- Private Development
- Allocated Parking
- Long Lease
- Close To Transport

Endwell Road,
London, SE4



Ground Floor

Total area (approx.): 46.8 sq. m (503.7 sq. ft)

Terrace : 4.3 sq. m (46.3 sq. ft)