



**Connells**

Pound Way  
Southam





## Property Description

Two double bedroom terraced property available for sale with no onward chain!

An ideal first time buy or investment, this property offers ample living space and is in need of slight modernisation.

The accommodation comprises; welcoming entrance hallway, lounge, separate kitchen, two well-proportioned double bedrooms and the family bathroom.

Externally there is a double tarmac driveway and low maintenance rear garden.

The well regarded historic market town of Southam offers rural community living with the advantages of town amenities. Ideally situated between Coventry & Banbury on the A423 Southam is easily connected to Royal Leamington Spa, the historic town of Warwick, famous William Shakespeare's hometown of Stratford upon Avon, Gaydon, Daventry and Rugby, where you will find mainline railway links to take you into Birmingham and London. The town enjoys easy access to the major road networks including the M40, M6, M69 & M1.

Within Southam are three primary schools, Southam Primary School, St Mary's Catholic School & St James Church of England. Southam College secondary school is rated outstanding by Ofsted. Private education can be found close by in Princethorpe, Leamington Spa, Rugby & Warwick.

## Approach

Via driveway leading to the front door.

## Entrance Hallway

Welcoming entrance hallway with stairs rising to the first floor and an under stairs storage cupboard, a radiator and laminate flooring.

## Lounge

11' x 15' ( 3.35m x 4.57m )

Spacious, light and airy lounge consisting of a radiator and sliding patio doors leading to the garden.

## Kitchen

12' 1" x 9' ( 3.68m x 2.74m )

Fitted with wall and base units with work surfaces over and tiling to the splash back areas, incorporating a sink and drainer unit. There is an integrated electric oven and gas hob with extractor fan over, whilst providing space for white goods. Comprising a radiator, ceiling spotlights and a double glazed window to front elevation.

## First Floor

### Landing

The stairs lead from the hallway. There is loft access and a built-in cupboard housing the gas central heating boiler. With doors to both bedrooms and the family bathroom.

### Bedroom One

12' max x 12' ( 3.66m max x 3.66m )

Double bedroom benefitting from a built-in wardrobe, wood effect flooring, a radiator, television point and a double glazed window to front elevation.

### Bedroom Two

13' x 8' 1" ( 3.96m x 2.46m )

Double bedroom having wood effect flooring, a radiator and a double glazed window to rear elevation.

### Bathroom

Three piece suite fitted with a wash hand basin, bath with shower over and a low level W/C. Having a radiator, an extractor fan and a double glazed window to rear elevation.

### Outside

#### Front Of The Property

With a double tarmac driveway, outside tap and decorative gravel stones.

#### Rear Garden

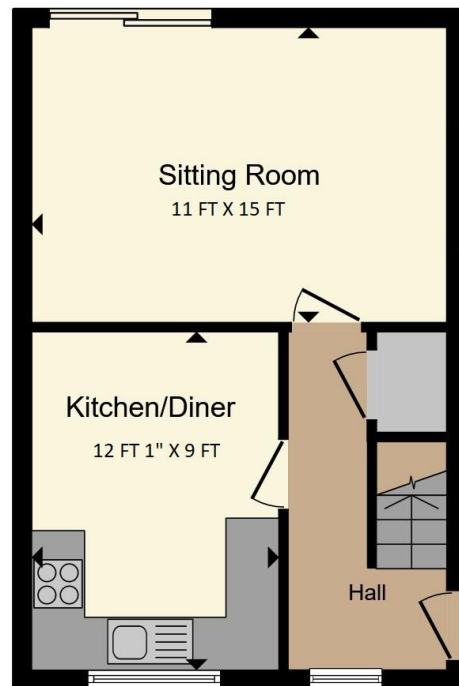
Well-maintained two tier garden being mainly laid to slabbed patio and fence enclosed. With a security light and gated rear access.



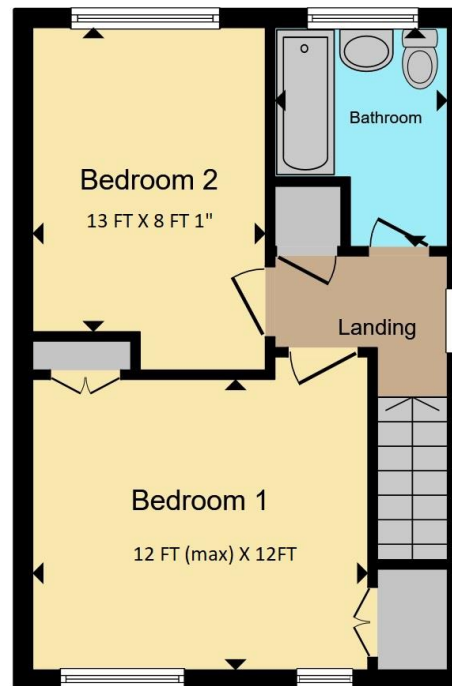








**Ground Floor**



**First Floor**

Total floor area 68.5 m<sup>2</sup> (737 sq.ft.) approx

This floor plan is for illustrative purposes only. It is not drawn to scale. Any measurements, floor areas (including any total floor area), openings and orientation are approximate. No details are guaranteed, they cannot be relied upon for any purpose and they do not form part of any agreement. No liability is taken for any error, omission or misstatement. A party must rely upon its own inspection(s). Powered by [www.propertybox.io](http://www.propertybox.io)



To view this property please contact Connells on

**T 01926 881 441**  
**E [leamingtonspa@connells.co.uk](mailto:leamingtonspa@connells.co.uk)**

7-8 Euston Place  
 LEAMINGTON SPA CV32 4LL

EPC Rating: C Council Tax  
 Band: C

Tenure: Freehold

**view this property online [connells.co.uk/Property/STH104921](http://connells.co.uk/Property/STH104921)**



1. MONEY LAUNDERING REGULATIONS Intending purchasers will be asked to produce identification documentation at a later stage and we would ask for your co-operation in order that there will be no delay in agreeing the sale. 2. These particulars do not constitute part or all of an offer or contract. 3. The measurements indicated are supplied for guidance only and as such must be considered incorrect. Potential buyers are advised to recheck measurements before committing to any expense. 4. We have not tested any apparatus, equipment, fixtures, fittings or services and it is in the buyers interest to check the working condition of any appliances.

Connells Residential is registered in England and Wales under company number 1489613, Registered Office is Cumbria House, 16-20 Hockliffe Street, Leighton Buzzard, Bedfordshire, LU7 1GN. VAT Registration Number is 500 2481 05.

**See all our properties at [www.connells.co.uk](http://www.connells.co.uk) | [www.rightmove.co.uk](http://www.rightmove.co.uk) | [www.zoopla.co.uk](http://www.zoopla.co.uk)**

Property Ref: STH104921 - 0003