



Quarry Road

Leigh Upon Mendip, BA3 5QG

£550,000

This standout property has heaps of kerb appeal and has been cared for by the current owners. Its Bath Stone facade, double fronted design and internal character features makes this beautiful home a real gem.

- No onward sales chain
- Characterful home
- Potential to extend (STPP)
- Large gardens
- Desirable village
- Statement property

Viewing

Please contact our Bath Stone Property (MSN) Office on 01761 360144

if you wish to arrange a viewing appointment for this property or require further information.



3



1

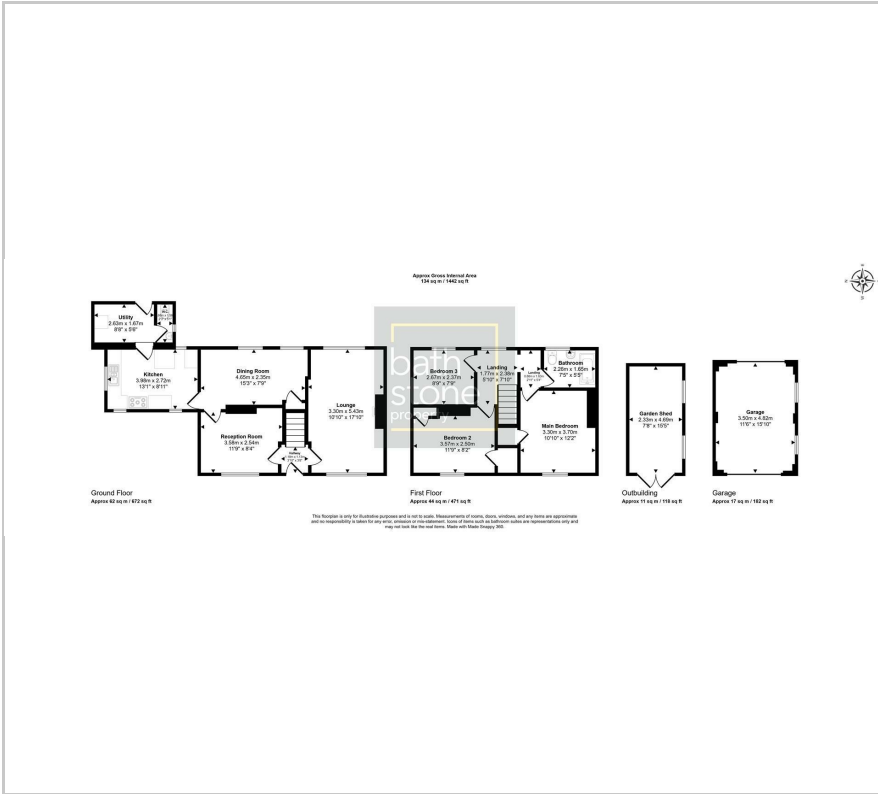


3

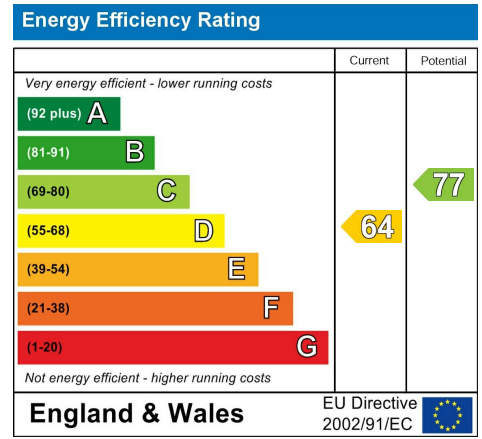


D

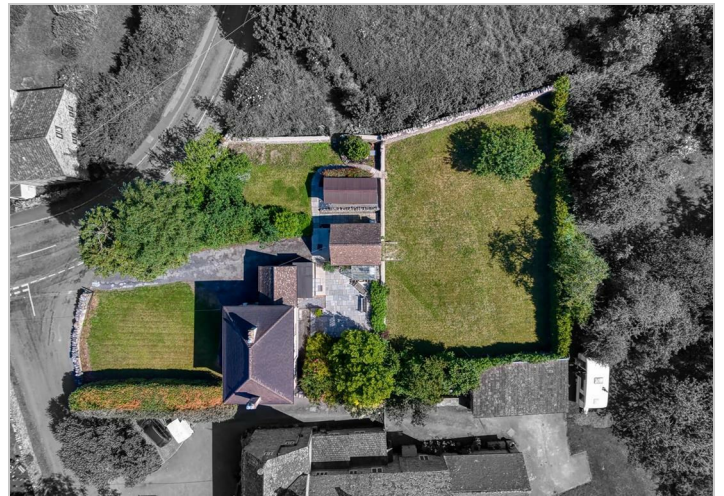
Floor Plan



Energy Efficiency Graph



Please give us Feedback



These particulars, whilst believed to be accurate are set out as a general outline only for guidance and do not constitute any part of an offer or contract. Intending purchasers should not rely on them as statements of representation of fact, but must satisfy themselves by inspection or otherwise as to their accuracy. No person in this firm's employment has the authority to make or give any representation or warranty in respect of the property.