

ehB
RESIDENTIAL

Your Property - Our Business



17, Prospect Road, Leamington Spa

£1,200 Per
Calendar Month



A three bedroom, spacious family home located in a popular residential area with off road parking. Unfurnished & Available End of March. (Not suitable for students)

Living Room

15'1" x 12'1" (4.6 x 3.7)

Kitchen

12'5" x 12'1" (3.8 x 3.7)

Study

10'2" x 6'6" (3.1 x 2.0)

Bedroom 1

12'1" x 8'10" (3.7 x 2.7)

Bedroom 2

12'1" x 8'10" (3.7 x 2.7)

Bedroom 3

12'5" x 6'6" (3.8 x 2.0)

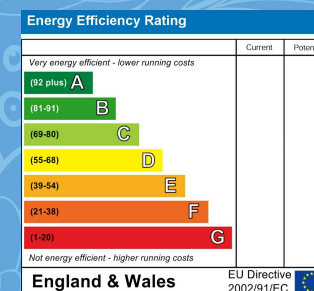


Your Property - Our Business

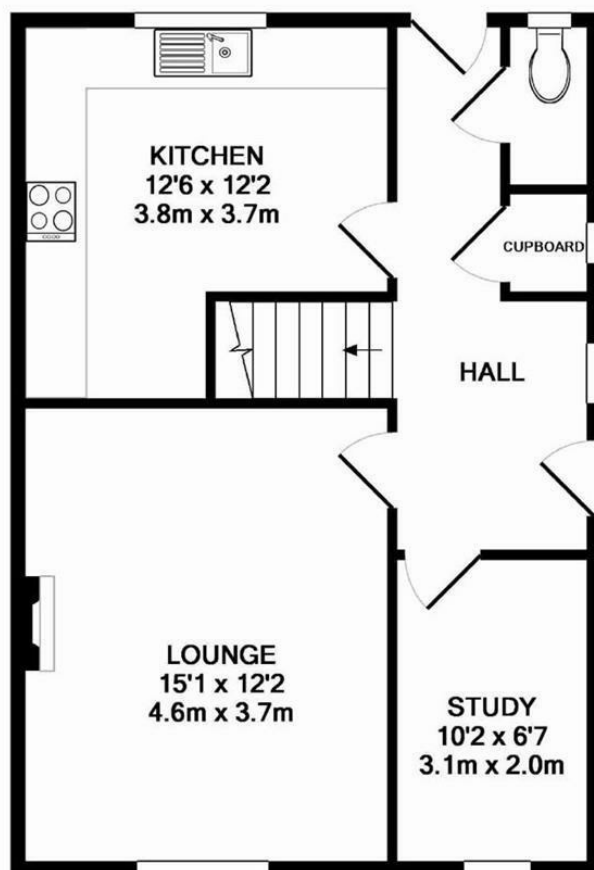
- Residential Estate Agents •
- Lettings and Property Managers •
- Land and New Homes Agents •

Leamington Spa Office
Somerset House
Clarendon Place
Royal Leamington Spa
CV32 5QN

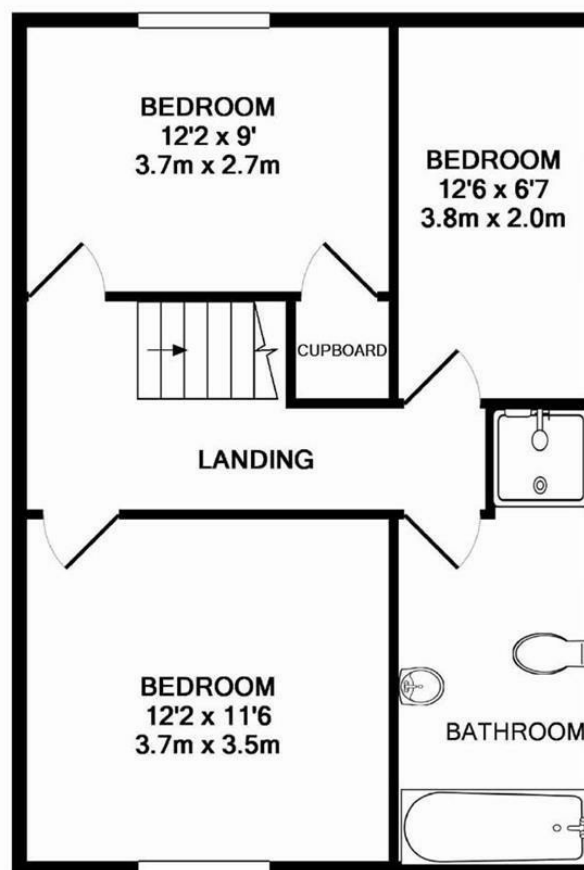
01926 881144 • ehbresidential.com



Also at: Warwick, 17-19 Jury St, Warwick CV34 4EL



GROUND FLOOR
APPROX. FLOOR
AREA 517 SQ.FT.
(48.0 SQ.M.)



1ST FLOOR
APPROX. FLOOR
AREA 517 SQ.FT.
(48.0 SQ.M.)

TOTAL APPROX. FLOOR AREA 1034 SQ.FT. (96.0 SQ.M.)
Made with Metropix ©2014