



11 Fin Street, Millbay, Plymouth, Devon, PL1 3FF



Price £260,000



This beautifully presented first-floor apartment occupies a prime position within the sought-after Quadrant Quay development, overlooking King Point Marina and across the water towards Drake's Island. This stylish home combines contemporary design with an enviable waterfront setting, providing the perfect balance of modern comfort and coastal charm.

The accommodation extends to approximately 733 sq. ft. and comprises a welcoming hallway with two useful storage cupboards leading through to a bright and spacious open-plan kitchen, dining and living area. Large windows flood the room with natural light and open onto a wraparound private balcony, creating a perfect spot to relax and enjoy panoramic views over the marina, and the Sound beyond.

The modern fitted kitchen features integrated appliances and generous workspace, ideal for both everyday living and entertaining.



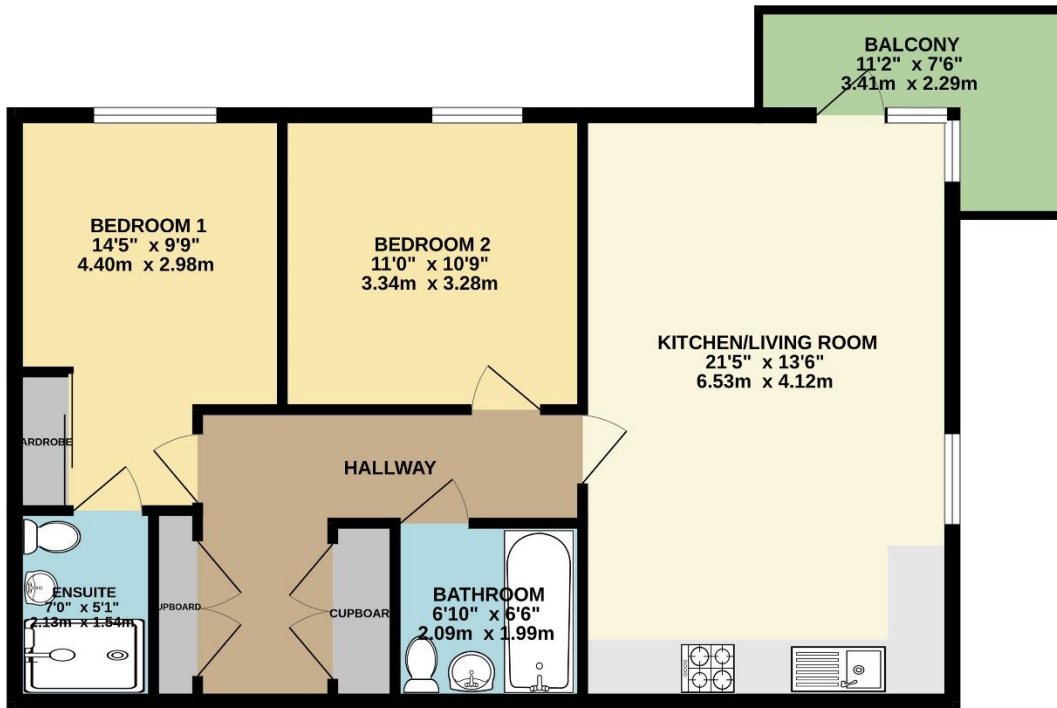
There are two double bedrooms, each thoughtfully designed and well-proportioned. The principal bedroom includes a built-in wardrobe and an elegant en-suite shower room, while the second bedroom is served by a contemporary family bathroom. The apartment benefits from covered allocated parking.

Quadrant Quay forms part of Plymouth's vibrant waterfront community, with easy access to the city centre, Royal William Yard, and the historic Barbican. The area offers a wealth of restaurants, cafés, and coastal walks, making it one of the most desirable locations in the city.

This is a rare opportunity to acquire a first-floor apartment in an exceptional waterside position, offering comfort, convenience, and uninterrupted views of the marina, Drake's Island, and beyond.

Lang Town and Country advise an internal inspection of this fantastic apartment which is being offered to the market with no onward chain.

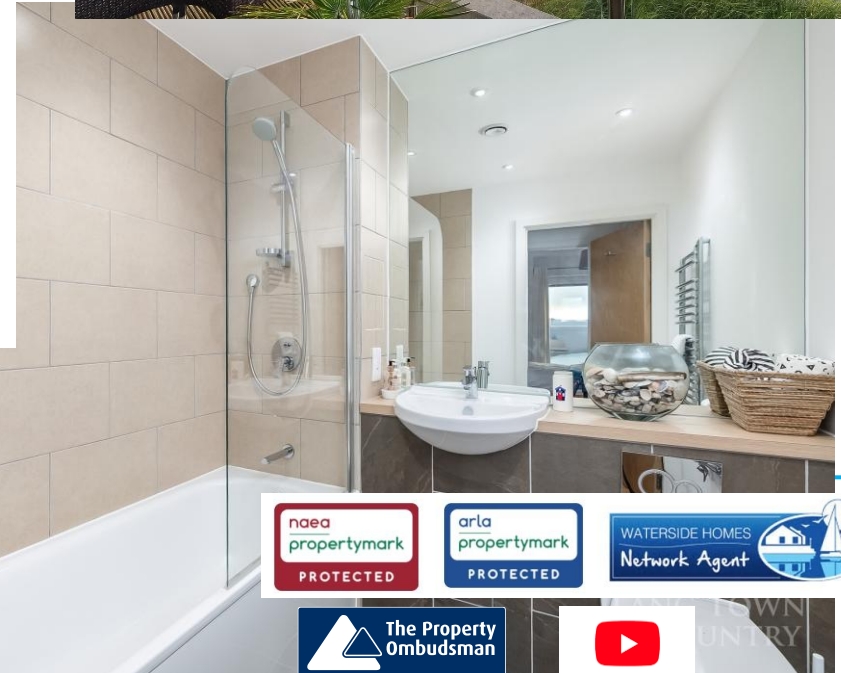
To view this property call Lang Town & Country Estate Agents on [01752 200909](tel:01752 200909)



TOTAL FLOOR AREA : 733 sq.ft. (68.1 sq.m.) approx.

Whilst every attempt has been made to ensure the accuracy of the floorplan contained here, measurements of doors, windows, rooms and any other items are approximate and no responsibility is taken for any error, omission or mis-statement. This plan is for illustrative purposes only and should be used as such by any prospective purchaser. The services, systems and appliances shown have not been tested and no guarantee as to their operability or efficiency can be given.

Made with Metropix ©2025



Email: waterside@langtownandcountry.com
www.langtownandcountry.com

are the...
 purpose. A buyer must check the availability of any property and make an appointment to view before embarking on any journey to see a property.

