

EDEN HOMES

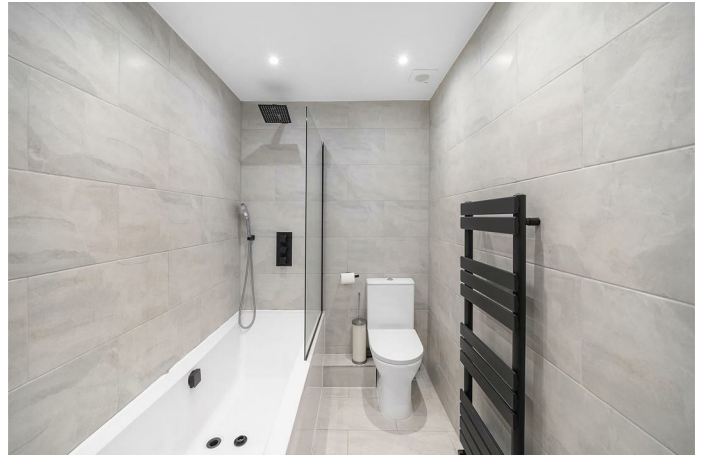
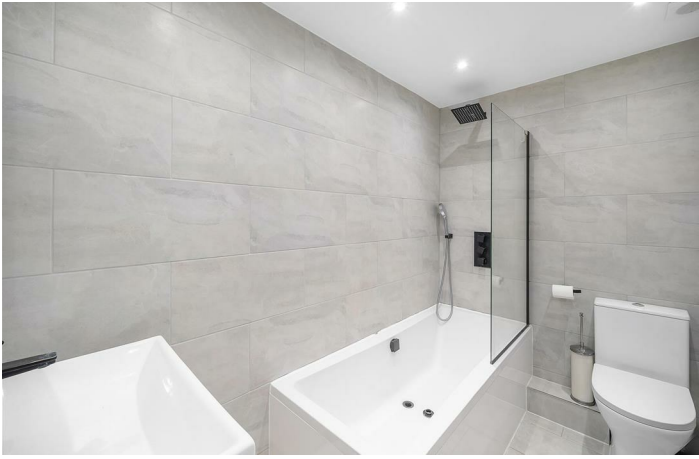


185 Huntingfield Road, London, SW15 5EN

Asking price £700,000

VIEWINGS AVAILABLE FROM 30th MAY (A MUST SEE) Set within the ever-popular Dover House Conservation Area, this beautifully presented two double bedroom mid-terraced home has been fully refurbished throughout to an exceptional standard. Combining classic period charm with contemporary style, the property offers a thoughtfully designed and light-filled living environment. The ground floor features a bespoke open-plan kitchen with integrated appliances, stylish cabinetry, and a central kitchen island with hob, seamlessly flowing into a bright and airy living space. Elegant bifold doors open out to a quaint patio garden with views across the local allotments, creating a peaceful setting for both relaxation and entertaining. Upstairs, there are two well-proportioned double bedrooms complemented by a modern tiled bathroom with a bath, shower, and heated towel rail. This stunning home is ideally situated close to Putney Heath, Richmond Park, and excellent local transport links, making it perfect for professionals and families seeking refined living in a desirable location.

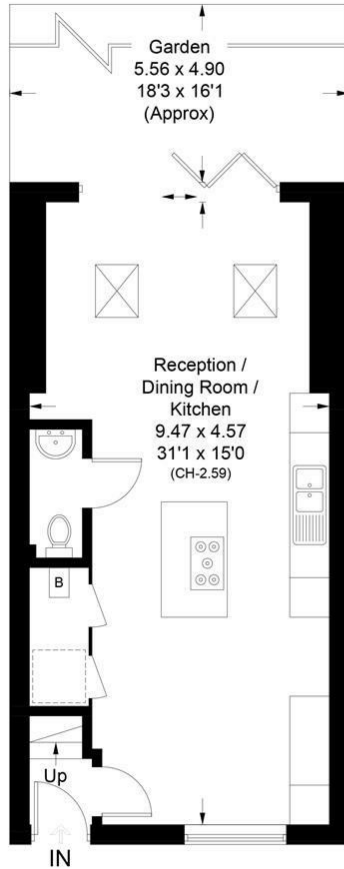




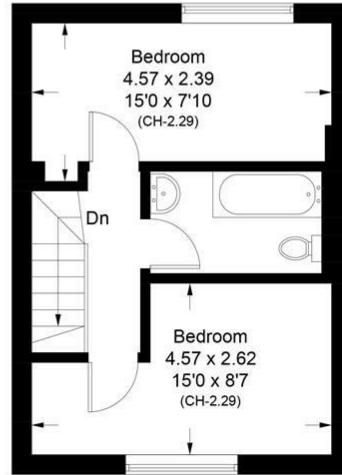
Floor Plan

Huntingfield Road, SW15

Approximate Area = 73.0 sq m / 786 sq ft
Including Limited Use Area (2.0 sq m / 21 sq ft)



= Reduced head height below 1.5m

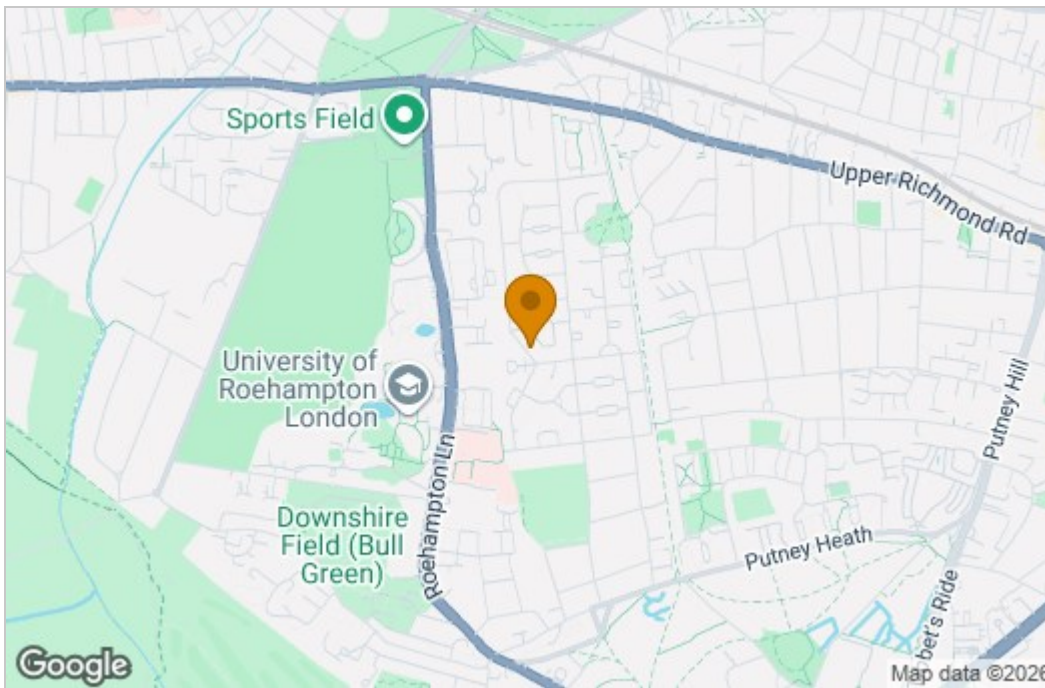


Ground Floor

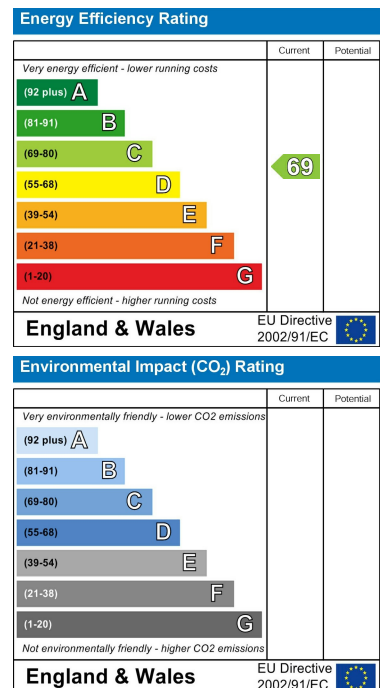
First Floor

Surveyed and drawn in accordance with the International property measurements standards (IPMS 2: Residential) Not drawn to scale unless stated. Whilst every care is taken in the preparation of this plan, please check all dimensions, shapes and compass bearings before making any decisions reliant upon them.

Area Map



Energy Efficiency Graph



These particulars, whilst believed to be accurate are set out as a general outline only for guidance and do not constitute any part of an offer or contract. Intending purchasers should not rely on them as statements of representation of fact, but must satisfy themselves by inspection or otherwise as to their accuracy. No person in this firm's employment has the authority to make or give any representation or warranty in respect of the property.