



**Mark Antony**  
SALES & LETTING AGENTS

# To LET

## 58 Finsbury Close, Great Sankey Unfurnished



Welcome to this delightful one-bedroom apartment, perfectly positioned in the heart of Great Sankey on Finsbury Close. This well-presented apartment offers a bright and spacious open-plan living and dining area, perfect for relaxing or entertaining. The adjoining kitchen is practical and well-equipped for everyday cooking. The property includes a comfortable double bedroom, providing a cozy retreat, and a modern three-piece bathroom suite with an over-bath shower. Additional benefits include an allocated parking space for one vehicle and a sought-after location close to local amenities, transport links, and green spaces. Ideal for professionals or couples seeking a convenient and stylish home in Great Sankey.

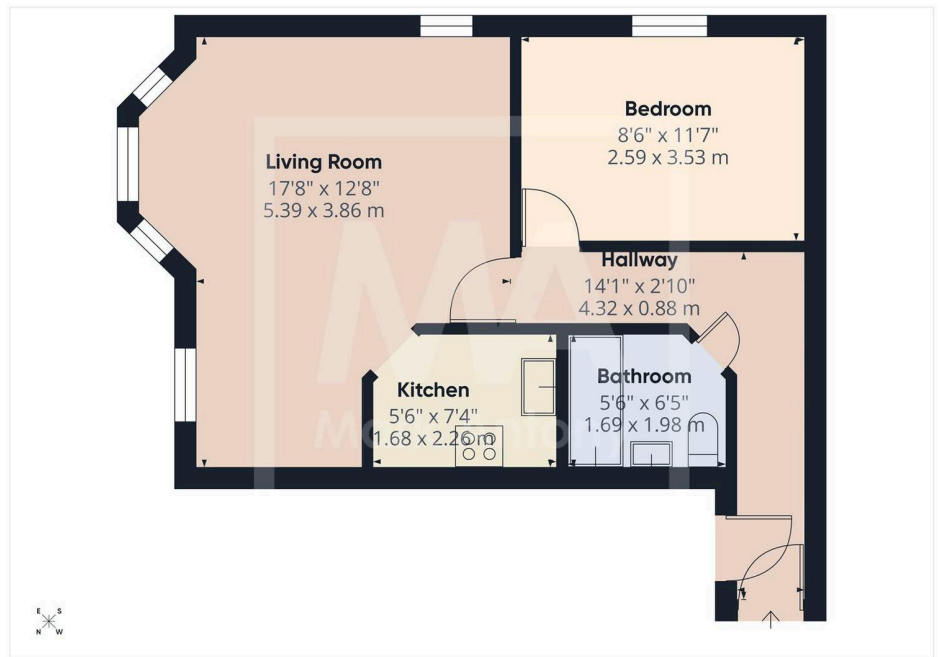
Council Tax band: A

EPC Energy Efficiency Rating: C

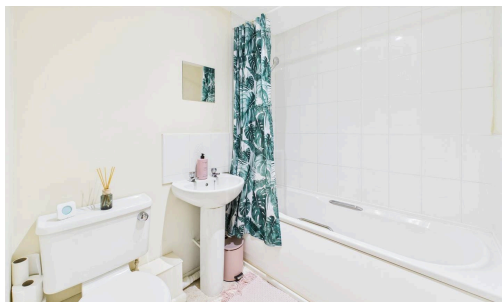
EPC Environmental Impact Rating: D

Note to Prospective Tenants:

- Parking - One Allocated Parking Space
- Appliances Included: Oven, Hob, Extractor Fan
- Fridge/Freezer
- Unfurnished



- › Virtual Viewing Available
- › One Bedroom Apartment
- › Spacious Lounge
- › Allocated Parking
- › Convenient Kitchen
- › Modern Decor
- › Close to Local Amenities
- › Easy Access to Transport Links



and they sign up fully managed with us.

# £50 FOR YOU!

if you refer a Warrington landlord\*

Note: These details have been prepared as a general guide only and do not constitute any part of any contract. The function of any appliances, services, sockets or cables are not guaranteed. Any interested party should satisfy themselves about any matter of importance to them and not rely on the contents of these particulars when making the decision to offer.