



Let **UK** Home

1 Bedrooms

E1 8PU

Located in London

**£3,575 Per Month**



[info@letukhome.co.uk](mailto:info@letukhome.co.uk)

<https://www.letukhome.co.uk/>

01795 358 886



## Cashmere House, 37 Leman Street, Aldgate, London,



Let UK Home are excited to offer this spectacular one bedroom apartment in the heart of Cashmere House part of Goodman's Field in Aldgate.

This property comprises a large bright open plan kitchen and living room leading to a large private balcony with great views, one double bedroom with a fitted wardrobe and a balcony, a large family sized bathroom and ample storage. A virtual tour is provided.

The apartment will be equipped with concierge service, business reception room, screening room, gym, swimming pool, spa, sauna room, green space and outdoor public space.

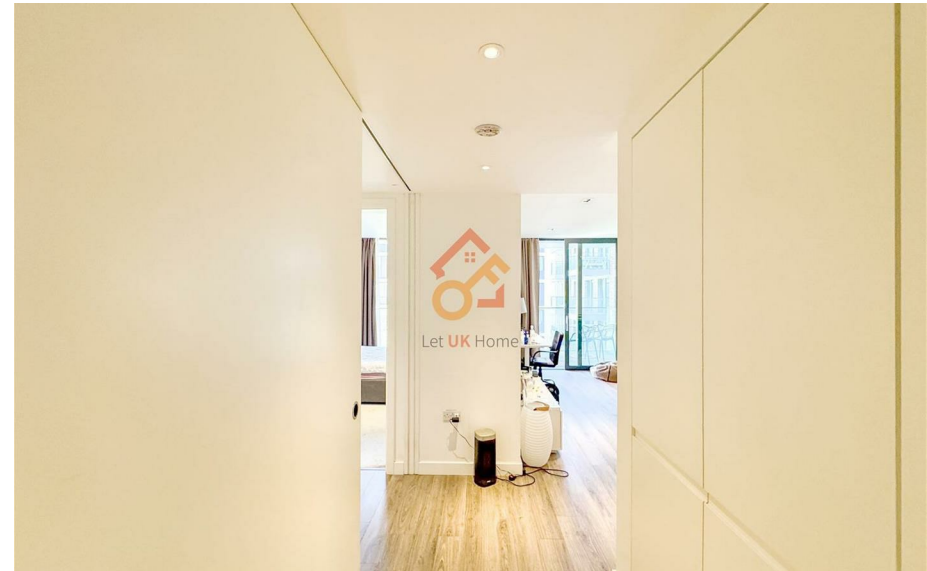
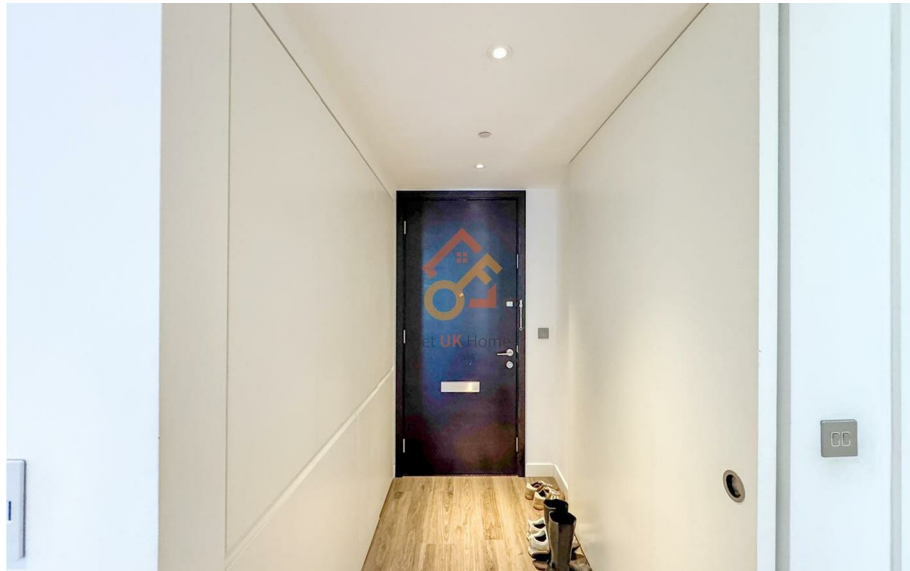
The apartment is across the river from Canary Wharf and not far from the Concord Dome. There are a large number of shops, supermarkets, restaurants and cafes. There are also Brick Lane Market and Columbia Flower Market near the apartment. The River Thames and Tower Bridge are also within walking distance, and you can easily and quickly reach Whitechapel and St. Catherine's Docks.

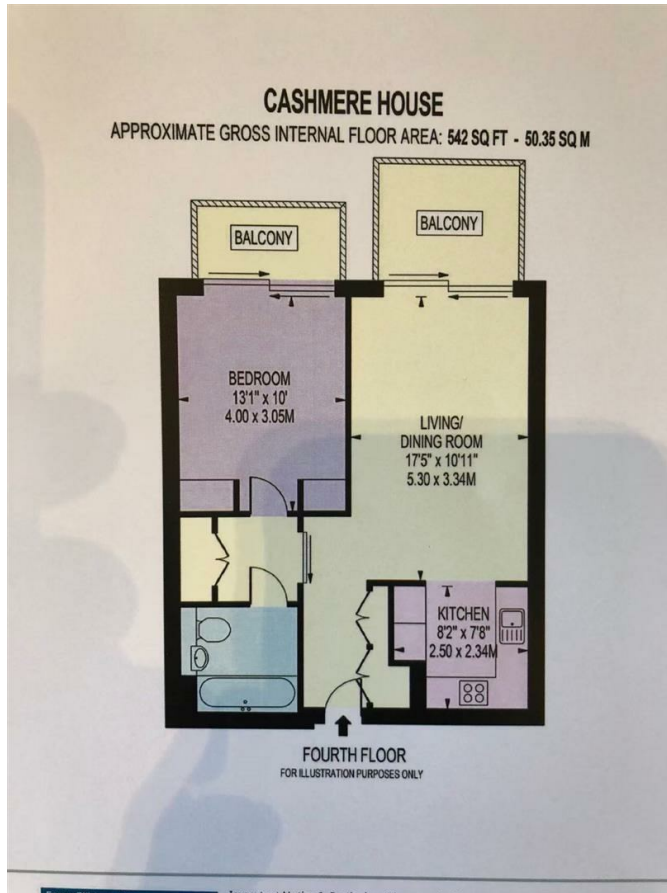
The development is within walking distance of Aldgate East and Tower Gateway Tube stations. There are plenty of transport options around, including buses, underground, and trains. Across the river is Dog Island, and you can easily get to Canary Wharf by ferry.

From the apartment, you can walk to Coventry University London campus or cycle to Queen Mary University. You can also take the bus or Tube to reach UCL, LSE, London College of Fashion (LCF), and Central Saint Martins (CSM) easily.

- 5th Floor
- The Gym & Swimming Pool
- The Spa
- Walk to Coventry University London campus
- Virtual Tour Available

- Concierge Service & 24h Security
- Sauna & Steam Room
- Walk to The River Thames and Tower Bridge
- Walk to Aldgate East and Tower Gateway Tube stations
- EPC Rating:





Let **UK** Home

3F 2 Eastbourne Terrace  
Paddington  
London  
W2 6LG

info@letukhome.co.uk

01795 358 886

**Council Tax Band: New Build**

**Local Authority:**

Agents Note: Whilst every care has been taken to prepare these particulars, they are for guidance purposes only. All measurements are approximate and are for general guidance purposes only and whilst every care has been taken to ensure their accuracy, they should not be relied upon and potential buyers/tenants are advised to recheck the measurements.

Energy Efficiency Rating		Current	Potential
Very energy efficient - lower running costs			
(92 plus) <b>A</b>			
(81-91) <b>B</b>			
(69-80) <b>C</b>			
(55-68) <b>D</b>			
(39-54) <b>E</b>			
(21-38) <b>F</b>			
(1-20) <b>G</b>			
Not energy efficient - higher running costs			
<b>England &amp; Wales</b>	EU Directive 2002/91/EC		

<https://www.letukhome.co.uk/>