



Cheltenham Court

140 Gloucester Terrace, W2

£3,150 per month
(£726.92 per week)

A 2nd floor (with lift) 911 sqft 2 bedroom apartment with high ceilings located on Gloucester Terrace. The property has large windows and is naturally well lit throughout. Paddington Station and the green open spaces of Hyde Park are located nearby.

CHESTERTONS



Cheltenham Court

140 Gloucester Terrace, W2

- 2nd Floor (with lift)
- High Ceilings
- Spacious Reception Room
- 2 Bedrooms
- Close to Paddington Station
- Close to Hyde Park

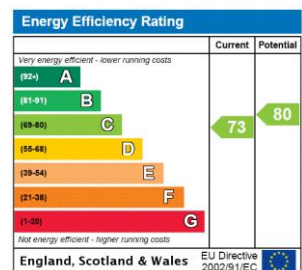


A second floor (with lift) 911 sqft two bedroom apartment with high ceilings located on Gloucester Terrace.

Furthermore an architect designed layout to maximise daylight, using large aligned doorways (mahogany doors and reclaimed teak hallway floor refurbished from an old school) and there is access to an under stair storage cupboard. The property also features a spacious reception room with two large sash windows, a good size kitchen and family bathroom.

Gloucester Terrace is a popular road located close to Paddington Station (Underground, National Rail, Heathrow Express and

Minimum Term: 12 months
Deposit Required: £0.00
Local Authority: City of Westminster
Council Tax Band:
EPC Rating: C
Part Furnished



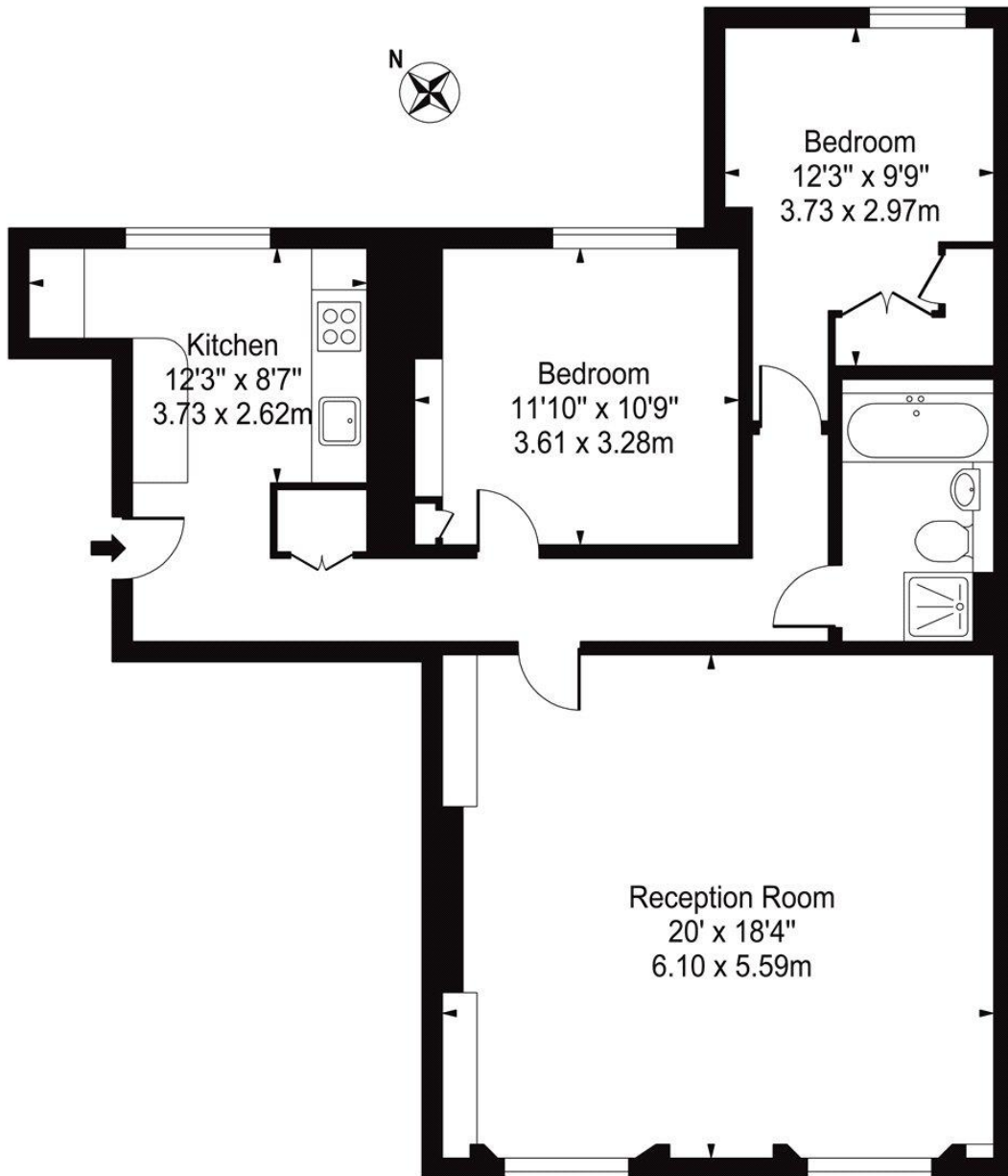
Chestertons Hyde Park & Marylebone Lettings

40 Connaught Street
 Hyde Park & Marylebone
 London
 W2 2AB
 hydeparklettingsusers@chestertons.co.uk
 02072985950
 chestertons.co.uk

Additional tenant charges apply (fees apply to non-AST tenancies only)
 Tenancy Agreement Fee: £300
 References per Tenant/Guarantor: £60
 Inventory check (approx. £100 – £250 inc. VAT)
 chestertons.co.uk/property-to-rent/applicable-fees

Gloucester Terrace, W2

Aproximate Gross Internal Area 911 sq ft / 84 sq m



Second Floor

For Illustration Purposes Only - Not To Scale

This floor plan should be used as a general outline for guidance only and does not constitute in whole or in part an offer or contract. Any intending purchaser or lessee should satisfy themselves by inspection, searches, enquiries and full survey as to the correctness of each statement. Any areas, measurements or distances quoted are approximate and should not be used to value a property or be the basis of any sale or let.

