


Brighton, BN2 1EG

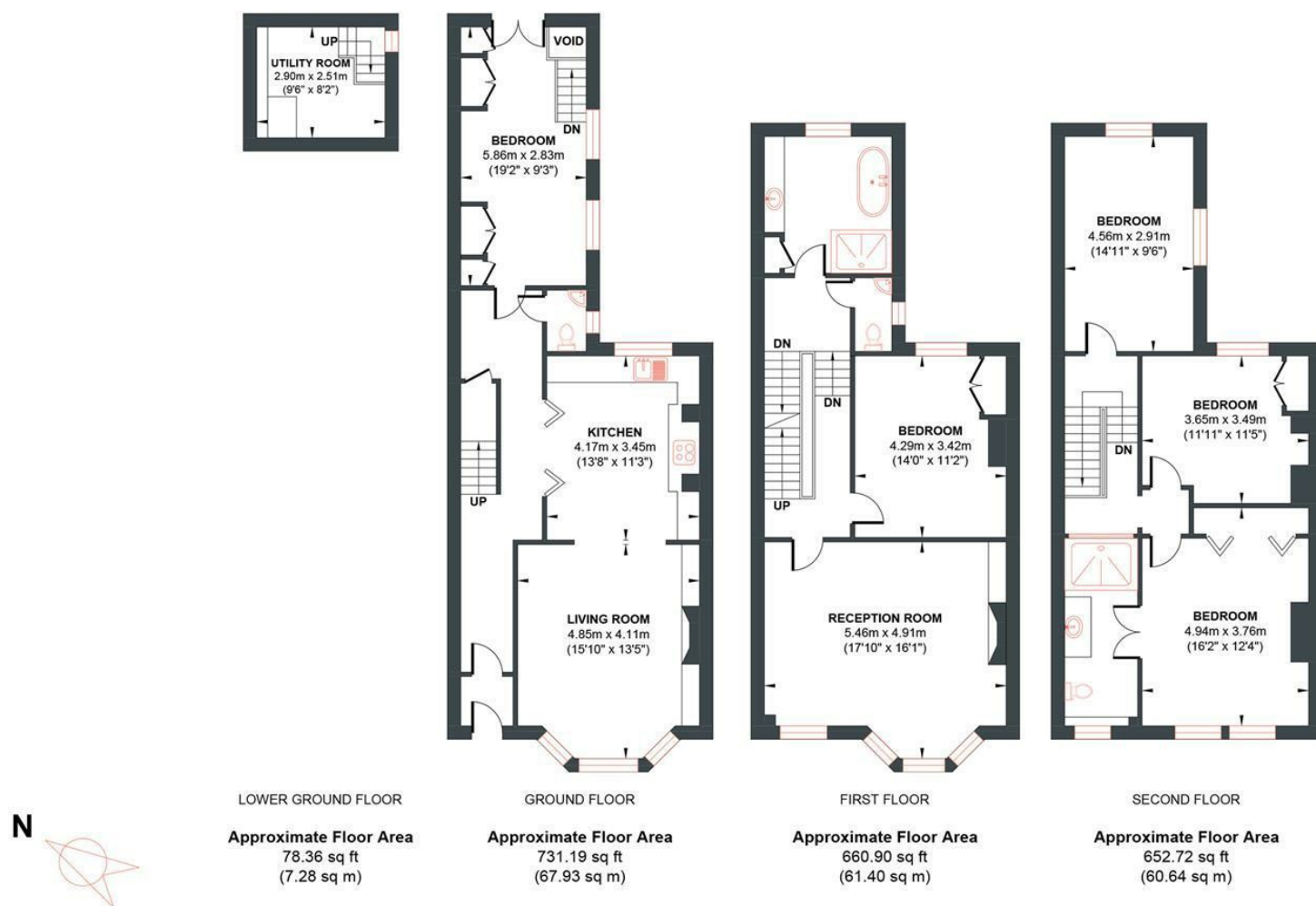
Guide price £950,000

Elegant Victorian Home in Prime Brighton Location – Over 2,100 Sq Ft of Timeless Charm & Modern Comfort



- Stunning Four/Five Bedroom Family Home
- Close to Hospital, Brighton College & Seafront
- Wonderful High Ceilings & A Wealth of Period Features
- En-Suite To Principle Bedroom
- Separate Utility room
- Over 2,100 Sq Ft of Luxury Living Space
- Mark Wilkinson Designer Kitchen
- High Spec Family Bathroom
- Sunny Paved Rear Garden
- Freehold

Energy Efficiency Rating		Current	Potential
<i>Very energy efficient - lower running costs</i> (92 plus) A (81-91) B (69-80) C (55-68) D (39-54) E (21-38) F (1-20) G		67	84
<i>Not energy efficient - higher running costs</i>			
England & Wales EU Directive 2002/91/EC			



All measurements are approximate

