



LANDOR ROAD, SW9

£2,100 PCM

- Two Bedrooms
- Newly Refurbished
- Modern Kitchen
- Private Garden
- Good Transport Links
- Energy Rating: C





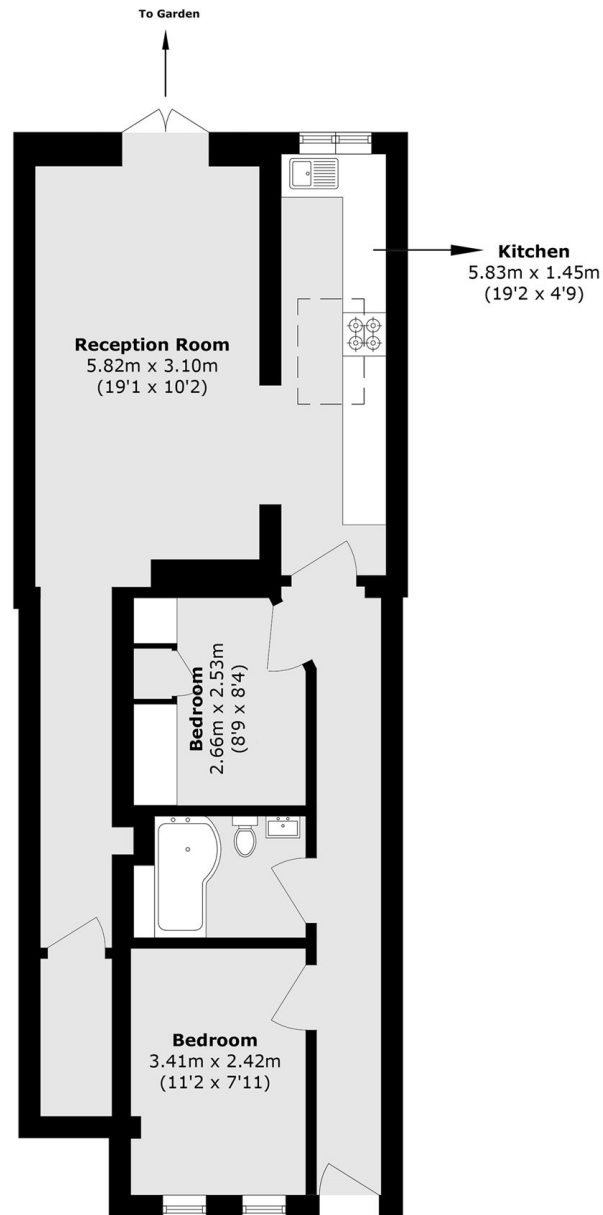
ABOUT THE HOME

A recently refurbished two bedroom ground floor apartment finished to a high standard with private garden close to local amenities and transport links, Would suit a young family or two professional sharers.

Situated in close proximity to Clapham North (Northern line) Underground (0.4 mile), Stockwell (Victoria line) Underground (0.4 mile) and Clapham High Street (Windrush line) Overground stations, the property is well positioned for the shops, cafés and bars of both Brixton and Clapham,







Total area (approx.): 67.0 sq. m (721.2 sq. ft)

JACKSONS CLAPHAM

73 Abbeville Road, London,
SW4 9JN

Sales: 020 8487 3177

Lettings: 020 8487 3178

Energy Rating: C We aim to make our particulars both accurate and reliable. However they are not guaranteed; nor do they form part of an offer or contract. If you require clarification on any points then please contact us, especially if you're traveling some distance to view. Please note that appliances and heating systems have not been tested and therefore no warranties can be given as to their good working order.