



## Harbord Street, SW6

£850,000

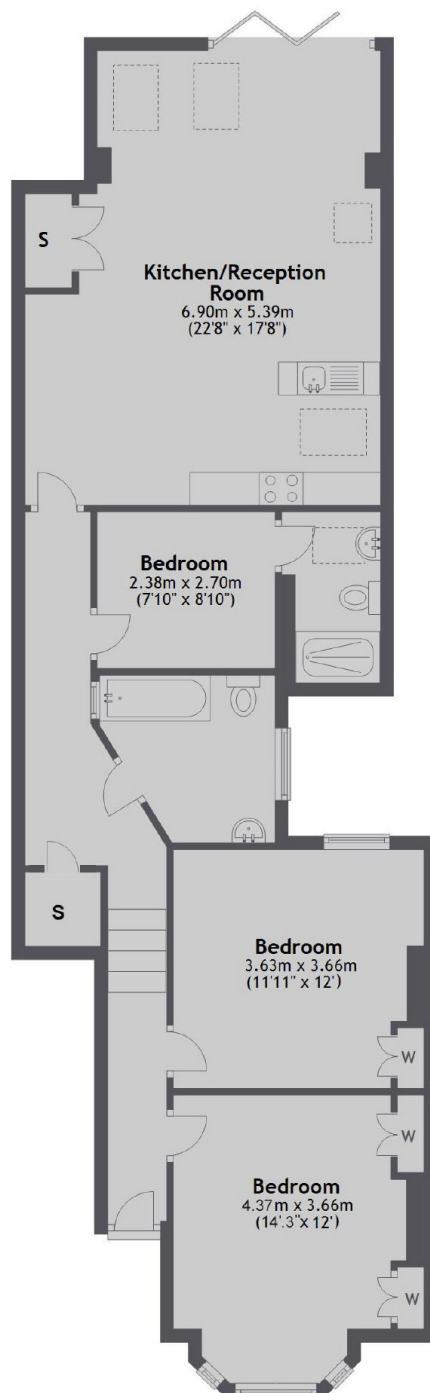
A charming three bedroom ground floor garden flat set on one of the quiet residential Alphabet Streets. The three bedrooms are complimented by a large open plan kitchen living room which leads onto a private garden.

Located on Harbord Street, one of the most desirable roads in the Bishops Park Conservation Area, you'll enjoy the best of Fulham living riverside walks, green open spaces, and an excellent choice of cafés, restaurants, and boutique shops all close by. Putney Bridge Station is just a short walk away, offering quick connections to the City and West End.

### Features

- Three Bedrooms
- Large Open Plan Kitchen
- Private Garden
- Ground Floor
- Period Conversion
- Bi-Fold Doors

# Harbord Street, London, SW6



Total area: approx. 95.6 sq. metres (1029.3 sq. feet)