



8 Providence Street, North Hill, Plymouth, Devon, PL4 8JG

# Price £150,000



Lang Town and Country are pleased to offer this two double bedroom mid-terraced home is an ideal purchase for first-time buyers or an excellent opportunity for investors. Situated in a prime central location, within a short walk of Plymouth City Centre, Plymouth University, the train station, and the popular Mutley Plain, the property offers easy access to a wide range of amenities, shops, restaurants, and transport links.

The property has been well maintained over the years, including Upvc double glazing and gas central heating, however, will require some modernisation and refreshment.

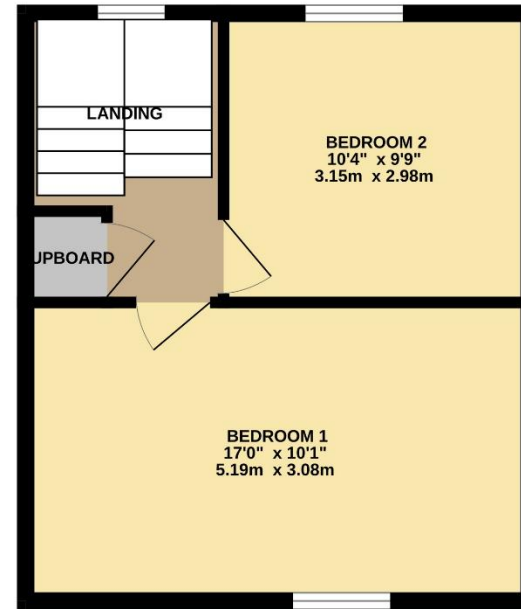
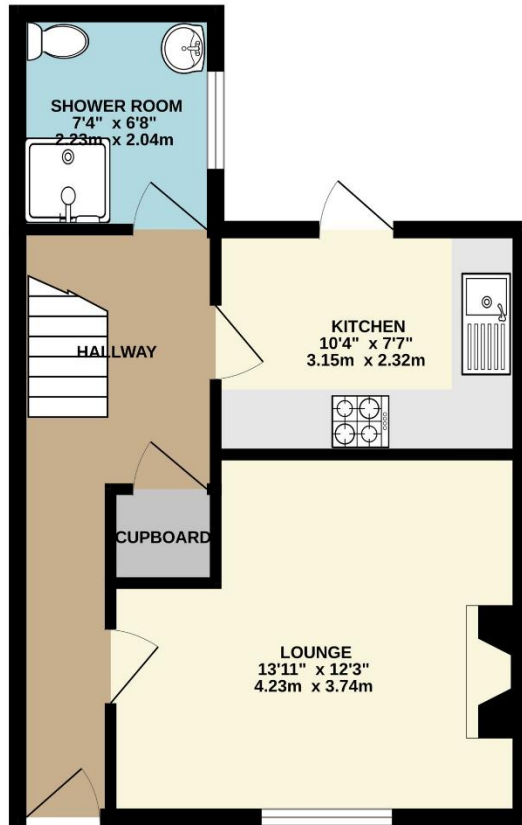
The accommodation comprises a lounge, kitchen, and bathroom on the ground floor with two double bedrooms on the first floor.

An early viewing is essential to appreciate this potentially charming property in a very convenient location.



To view this property call Lang Town & Country Estate Agents on **01752 256000**





TOTAL FLOOR AREA: 726 sq.ft. (67.4 sq.m.) approx.

Whilst every attempt has been made to ensure the accuracy of the floorplan contained here, measurements of doors, windows, rooms and any other items are approximate and no responsibility is taken for any error, omission or mis-statement. This plan is for illustrative purposes only and should be used as such by any prospective purchaser. The services, systems and appliances shown have not been tested and no guarantee as to their operability or efficiency can be given.  
Made with Metropix ©2026



Lang Town & Country  
6 Mannamead Road  
Mannamead  
Plymouth  
PL4 7AA  
Tel: 01752 256000

Lang Town & Country endeavour to ensure the accuracy of property details produced and displayed, we have not tested any apparatus, equipment, fixtures, fittings or services and so cannot verify that they are connected, in working order or fit for purpose. A buyer must check the availability of any property and make an appointment to view before embarking on any journey to see a property.

