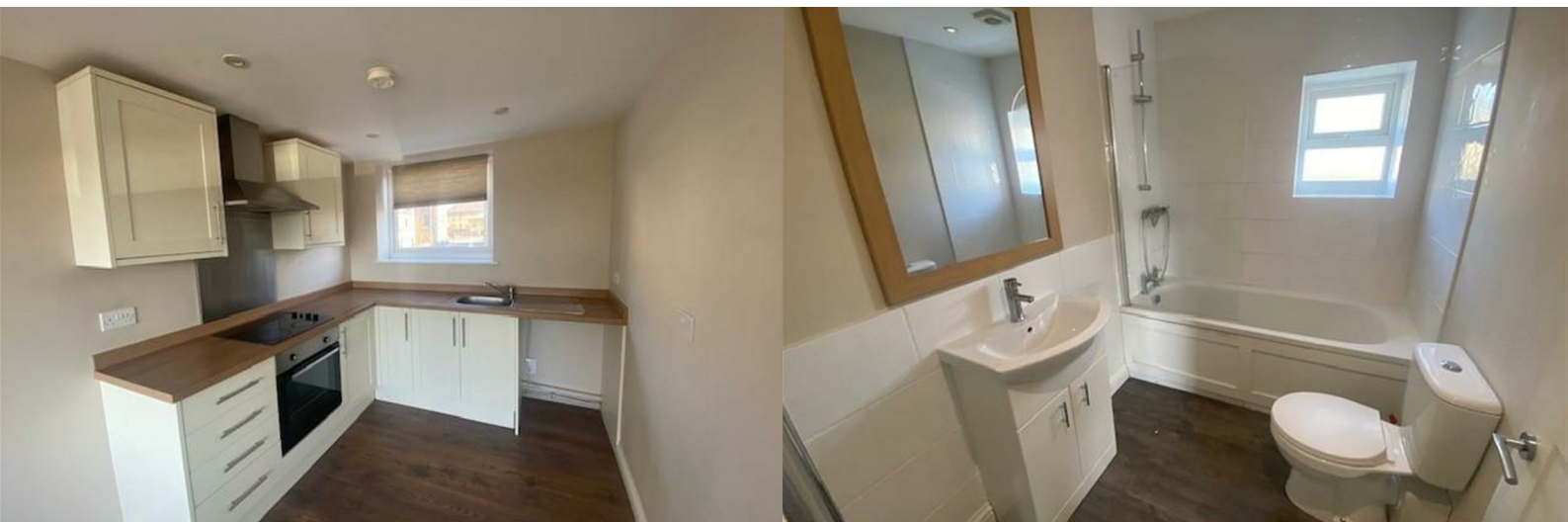




## Flat 2 Titan Apartment Town Gate

Wyke, Bradford, BD12 9AG

£700 Per Month



# Flat 2 Titan Apartment Town Gate

Wyke, Bradford, BD12 9AG

**£700 Per Month**



\*\*\*2 Bedroom Maisonette Flat\*\*\*Two Double Bedrooms\*\*\*Wyke Village\*\*\*

A wonderful opportunity to rent a 2 bedroom maisonette flat in the heart of Wyke village.

A modern flat which is accessed to the rear of a row of shops in Wyke village. The flat comprise of, entrance hallway, open plan living kitchen, bathroom and 2 good sized bedrooms. To the outside is a patio area and communal parking spaces. The property benefits from electric wall heaters and UPVC double glazing.\*\*\*\*\*Contact YORKSHIRE RESIDENTIAL 01274 606167 to arrange a viewing\*\*\*\*\*

**Entrance Hallway**

**Double Bedroom 2**

**Double Bedroom 1**

**Bathroom**

**Open Plan Living Kitchen Diner**



## Road Map



## Hybrid Map



## Terrain Map

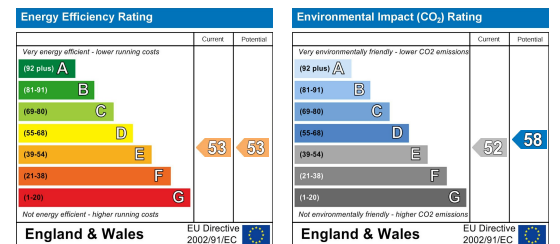


## Floor Plan

## Viewing

Please contact our Cleckheaton Office on 01924 501333 if you wish to arrange a viewing appointment for this property or require further information.

## Energy Efficiency Graph



These particulars, whilst believed to be accurate are set out as a general outline only for guidance and do not constitute any part of an offer or contract. Intending purchasers should not rely on them as statements of representation of fact, but must satisfy themselves by inspection or otherwise as to their accuracy. No person in this firm's employment has the authority to make or give any representation or warranty in respect of the property.