



The Wickets, TW15

£779,950

This is a modern five bedroom detached family home offering off-street parking for multiple cars. The property benefits from two en suites and a private walled garden, making it ideal for comfortable family living.

This property is ideally located on a quiet cul-de-sac within easy walking distance of Ashford High Street and Ashford railway station which will take you direct into London Waterloo within 30 minutes.

Features

- Detached
- Five Bedrooms
- Three Bathrooms
- Utility Room
- Off-Street Parking
- Private Garden



The Wickets, TW15

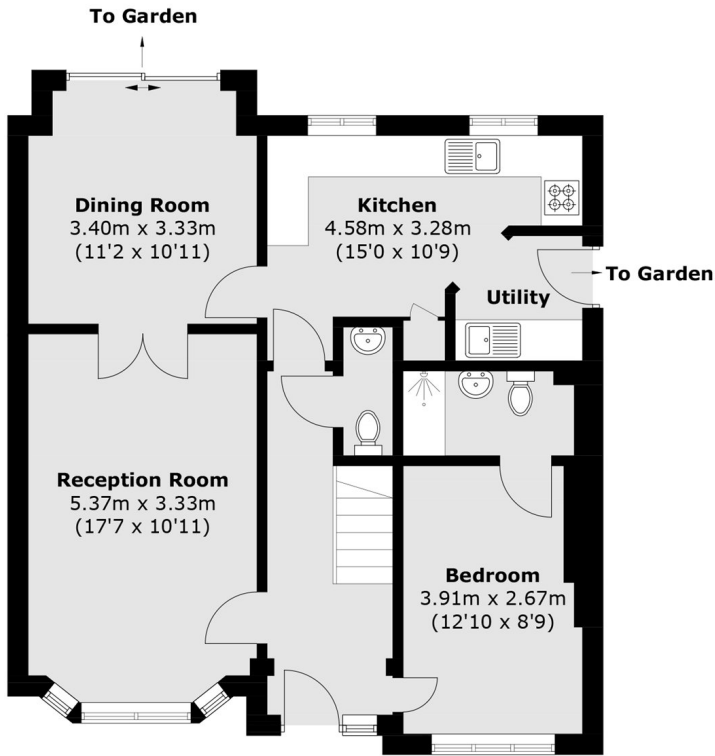
On the ground floor, you're welcomed by an impressive entrance hallway that immediately sets the tone for the space and light that flows throughout the home. Two beautifully bright reception rooms offer the perfect balance of elegance and comfort ideal for both relaxed family evenings and stylish entertaining. The newly refurbished kitchen is a true centrepiece, thoughtfully designed with modern finishes and complemented by a separate utility room.

From here, doors open directly onto the garden, seamlessly blending indoor and outdoor living. A standout feature is the expertly converted garage, now providing versatile accommodation currently arranged as a chic bedroom suite complete with its own en suite bathroom perfect for guests, multi-generational living, or a private retreat. Upstairs, the principal bedroom offers a calm and luxurious haven, complete with its own en suite bathroom.

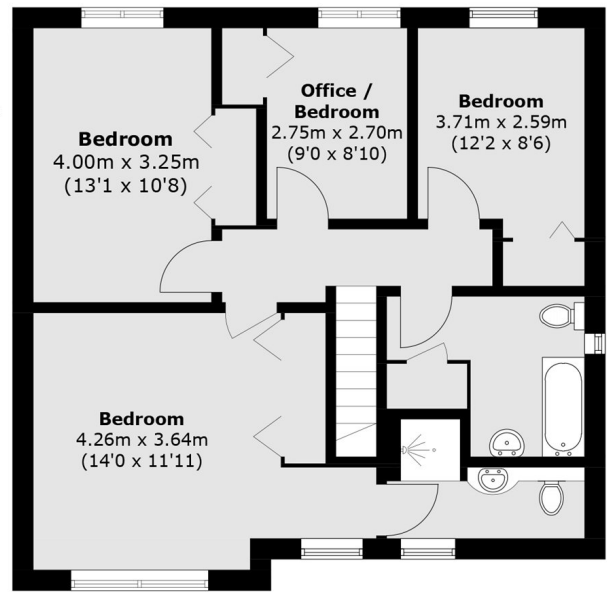
Three further well-proportioned bedrooms and a contemporary family bathroom complete the first floor, providing ample space for growing families. To the rear, the garden offers a delightful escape, featuring a stylish patio area for al fresco dining and a generous lawn an inviting space for both relaxation and play. At the front, ample off-street parking ensures convenience, while side access provides easy entry to the garden, adding to the home's practical appeal.



The Wickets, Ashford, TW15



Ground Floor



First Floor

Total area (approx.): 131.1 sq. m (1,411.1 sq. ft)