

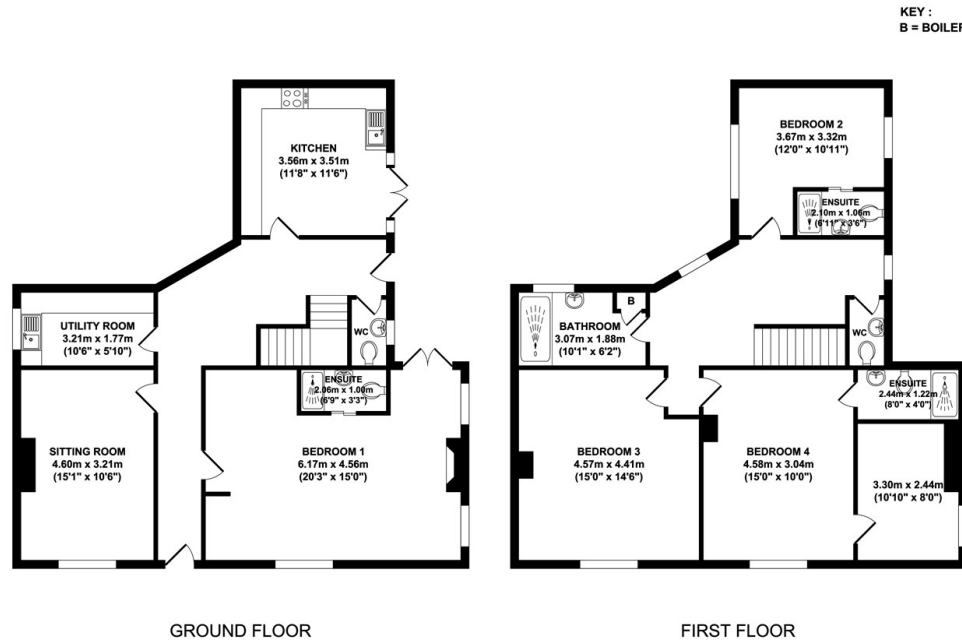


46 Borough Street, Castle Donington, Derby, DE74 2LB

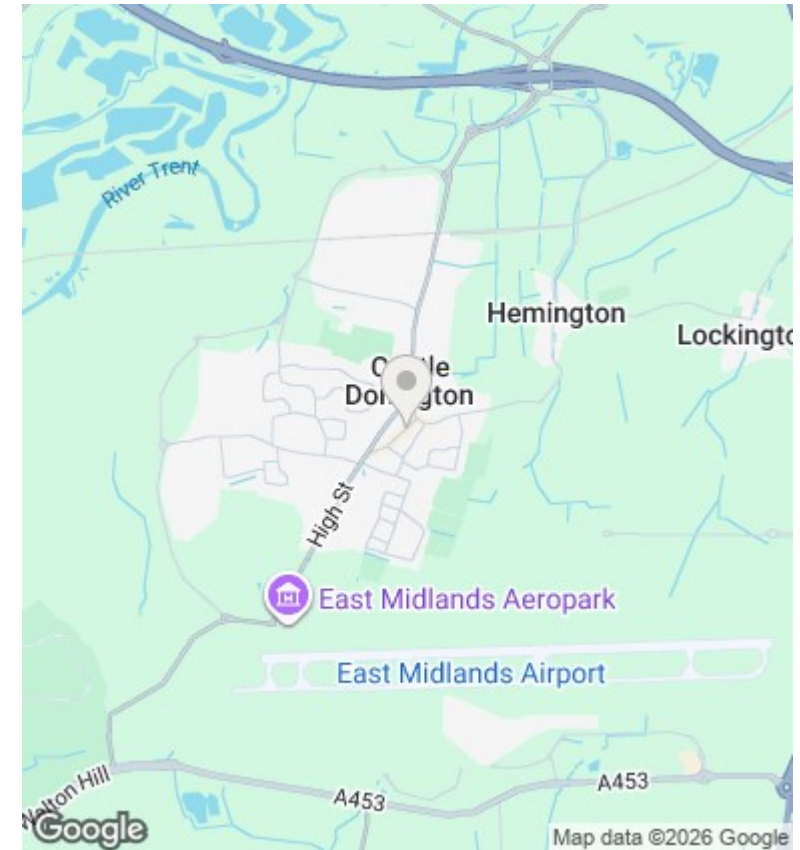
£1,900 PCM

- Fully furnished
- Kitchen diner
- Off road parking
- White goods included
- 4 large bedrooms
- Separate shower room
- 2 courtyard gardens
- 3 ensuites
- Utility room
- 2 separate toilets

46 Borough Street



Whilst every attempt has been made to ensure the accuracy of the floor plan contained here, measurements of doors, windows, rooms and any other items are approximate and no responsibility is taken for any error, omission, or mis-statement. This plan is for illustrative purposes only and should be used as such by any prospective purchaser. The services systems and appliance shown have not been tested and no guarantee as to their operability or efficiency can be given.



Directions

Viewings

Viewings by arrangement only. Call 01509 674140 to make an appointment.

Council Tax Band

E

EPC Rating:

D

Energy Efficiency Rating		Current	Potential
<i>Very energy efficient - lower running costs</i>			
(92 plus)	A		
(81-91)	B		83
(69-80)	C		
(55-68)	D	60	
(39-54)	E		
(21-38)	F		
(1-20)	G		
<i>Not energy efficient - higher running costs</i>			
England & Wales		EU Directive 2002/91/EC	