



7 Ash Gardens | Hackthorpe | Penrith | CA10 2FU

Guide Price £310,000



david britton
ESTATES



Key Features

- Three Bedroom Semi Detached Home
- Exclusive New Development built in 2023
- High quality fixtures and fittings
- Luxurious specification with upgrades
- Large, sociable open plan kitchen/dining room
- Three bedrooms, master with ensuite
- Family bathroom and cloakroom
- Large Garden with ample parking for 3/4 cars
- Desirable village location close to Penrith
- Excellent transport links to A6 and M6

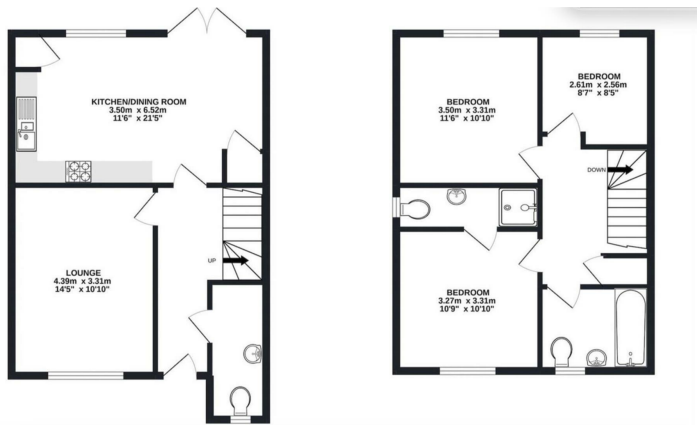
Summary

This modern 3 bedroom semi-detached house is a gem waiting to be discovered! Sitting on the new and exclusive Stoneswood Homes Development in Hackthorpe and boasting a spacious 1,023 sq ft layout, this modern home offers a perfect blend of luxury, style and comfort.





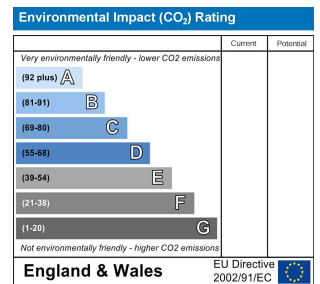
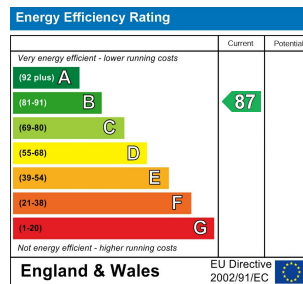
Floor plans



COUNCIL TAX BAND - WestmorlandC

DISCLAIMER

These particulars, whilst believed to be accurate are set out as a general guideline and do not constitute any part of an offer or contract. Intending Purchasers should not rely on them as statements of representation of fact but must satisfy themselves by inspection or otherwise as to their accuracy. The services, systems, and appliances shown may not have been tested and has no guarantee as to their operability or efficiency can be given. All floor plans are created as a guide to the lay out of the property and should not be considered as a true depiction of any property and constitutes no part of a legal contract.



Unit 3 Mason Court Gillan Way, Penrith 40 Business Park
 Penrith
 Cumbria
 CA11 9GR
 01768881111
 Sales@brittonestates.co.uk
 www.brittonestates.co.uk