

**GRICE &  
HUNTER**

Chartered Surveyors  
Estate Agents & Valuers  
Est 1924



## **48 Lindsey Drive, Crowle, DN17 4NY**

- A traditional 4 Bedroom (en-suite) Detached House • 2 Reception Rooms and Conservatory addition • Ground floors cloaks (w/c) • PVCu Double Glazing • Gas Central Heating •
- Integral Garage • Available with immediate vacant possession •
- In need of timely updating •



**£254,500 NO CHAIN**



**Accommodation** (room sizes approx. only)

**Entrance HALL** with radiator and understairs storage cupboard.

**CLOAKROOM** with w.c, wash basin, radiator and PVCu double glazed window.

**KITCHEN** (3.93m x 2.30m) including single drain sink, base and wall cabinets, integral single oven and 4 ring gas hob. Radiator, space for appliances, external door to side and PVCu double glazed window.

**DINING ROOM** (3.15m x 3.3m) with radiator and patio doors to Conservatory.

**CONSERVATORY** (2.60m x 2.50m) with PVCu double glazing and external door leading to the garden.

**LOUNGE** (4.13m x 3.65m) with PVCu double glazed window and radiator.

### First Floor

**BEDROOM 1** (3.4m x 3.36m excluding wardrobe) PVCu double glazed window, radiator and built in double wardrobe.

**EN-SUITE** (1.9m x 1.4m) with shower cubicle, wash basin and toilet. PVCu double glazed window.

**BEDROOM 2** (3.8m x 2.68m) PVCu double glazed window, radiator and storage cupboard

**BEDROOM 3** (3.28m x 2.42m) PVCu double glazed window and radiator.

**BEDROOM 4** (2.6m x 2.67m) PVCu double glazed window and radiator.

**BATHROOM** (1.87m x 1.70m) with bath, wash basin, toilet, radiator and PVCu double glazed window.

### OUTSIDE

Double width driveway parking in front of the integral **GARAGE**.

Side access to the rear garden.

### SERVICES (not tested)

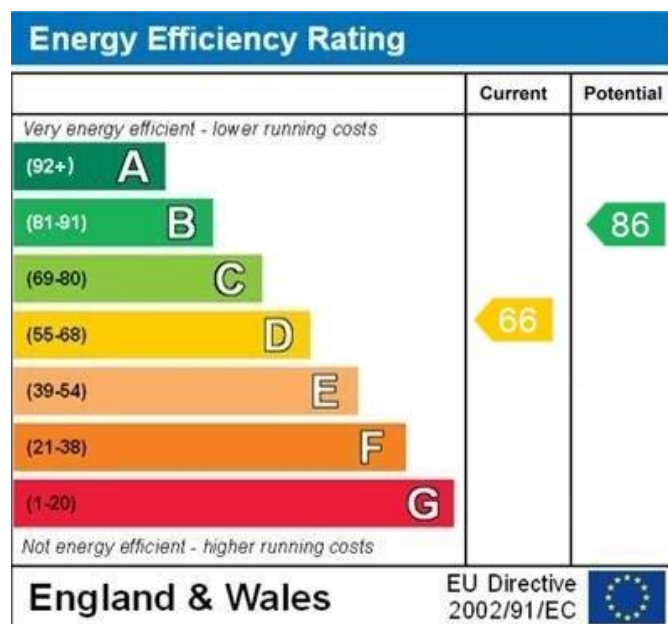
- Mains water, electricity, drainage and gas
- Gas central heating to radiators.

**LOCAL AUTHORITY** North Lincolnshire Council

**COUNCIL TAX** Band 'D' (on-line enquiry)

**TENURE** Freehold.

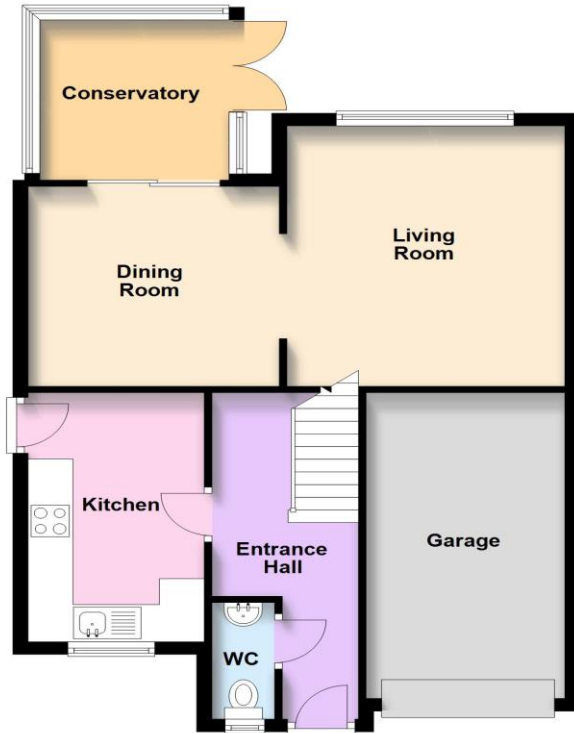
**VIEWING** Strictly by prior appointment through Grice & Hunter 01427 873684





### Ground Floor

Approx. 65.9 sq. metres (709.7 sq. feet)



### First Floor

Approx. 49.1 sq. metres (528.1 sq. feet)



Total area: approx. 115.0 sq. metres (1237.8 sq. feet)

**23 High Street, Epworth,  
Near Doncaster DN9 1EP  
Tel: (01427) 873684  
epworth@gricehunter.co.uk**

**7 Priory Place,  
Doncaster DN1 1BL  
Tel: (01302) 360141  
doncaster@gricehunter.co.uk**

#### Consumer Protection Regulations

1. The mention of any appliances and/or services within these Sales Particulars does not imply they are in full and efficient working order
2. All measurements, areas and distances are approximate only. Plans are for illustration purposes only and not to be used for Land Registry purposes.
3. Extracts from the Ordnance Survey are for identification purposes only and the surroundings may have changed. The plan may not be an accurate reflection of the actual boundaries and must not be used to depict legal boundaries.
4. Details regarding the Council Tax and Planning Permissions have been obtained by online or oral enquiry and we advise any interested parties to satisfy themselves with the relevant Local Authority.

#### Misrepresentation

Grice & Hunter give notice that these particulars are believed to be correct but their accuracy cannot be guaranteed and they do not constitute part of an offer or contract. Intending purchasers or tenants should not rely on them as statements or representations of fact, but must satisfy themselves by inspection or otherwise as to their accuracy. No person in employment of Grice & Hunter has authority to make or give any representation or warranty in relation to the property.