



**Connells**

Lower Ground Close  
Brize Norton CARTERTON

### Property Description

Situated on the highly sought after Brize Meadow development is this impressive four-bedroom detached family home which is located on Lower Ground Close. This home presents a fantastic opportunity for buyers looking to upsize into a spacious and thoughtfully designed property. The home offers a superb sense of space throughout, with a light and airy flow across two well planned floors.

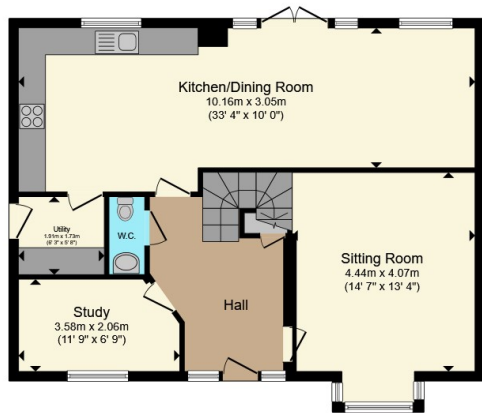
Upon entering, you are welcomed by a bright and inviting entrance hall which sets the tone for the rest of the property. The ground floor features a separate study, a well-proportioned living room, and a stunning kitchen/dining area ideal for modern family living and entertaining. Additional benefits include a utility room and a convenient downstairs cloakroom.

Upstairs, the property boasts four generously sized double bedrooms. Both the principal bedroom and bedroom two enjoy the added luxury of their own en-suite facilities, while the remaining accommodation is served by a stylish four piece family bathroom which is perfect for growing families.

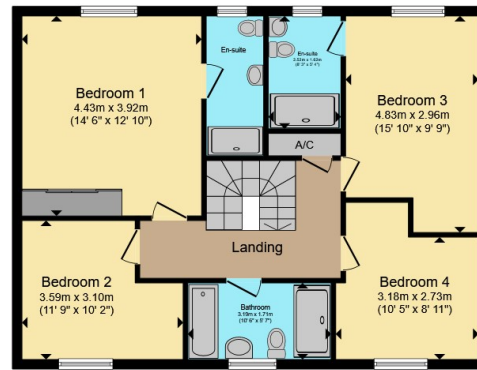
Externally, the property continues to impress with a generous, rear garden and is ideal for those who value outdoor space. There is also a double garage and driveway, providing ample secure off street parking for multiple vehicles. Early viewing is highly recommended to fully appreciate everything this fantastic home has to offer.



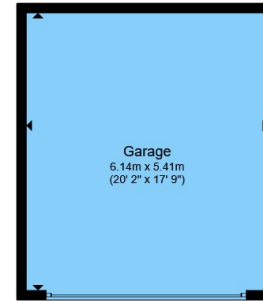




**Ground Floor**



**First Floor**



**Garage**



Total floor area 189.8 m<sup>2</sup> (2,043 sq.ft.) approx

This floor plan is for illustrative purposes only. It is not drawn to scale. Any measurements, floor areas (including any total floor area), openings and orientation are approximate. No details are guaranteed, they cannot be relied upon for any purpose and they do not form part of any agreement. No liability is taken for any error, omission or misstatement. A party must rely upon its own inspection(s). Powered by [www.propertybox.io](http://www.propertybox.io)



To view this property please contact Connells on

**T 01869 244761**  
**E [bicester@connells.co.uk](mailto:bicester@connells.co.uk)**

5 Market Square  
 BICESTER OX26 6AA

EPC Rating: A Council Tax  
 Band: E

**view this property online [connells.co.uk/Property/CAR104146](http://connells.co.uk/Property/CAR104146)**

Tenure: Freehold



1. MONEY LAUNDERING REGULATIONS Intending purchasers will be asked to produce identification documentation at a later stage and we would ask for your co-operation in order that there will be no delay in agreeing the sale. 2. These particulars do not constitute part or all of an offer or contract. 3. The measurements indicated are supplied for guidance only and as such must be considered incorrect. Potential buyers are advised to recheck measurements before committing to any expense. 4. We have not tested any apparatus, equipment, fixtures, fittings or services and it is in the buyers interest to check the working condition of any appliances.

Connells Residential is registered in England and Wales under company number 1489613, Registered Office is Cumbria House, 16-20 Hockliffe Street, Leighton Buzzard, Bedfordshire, LU7 1GN. VAT Registration Number is 500 2481 05.

**See all our properties at [www.connells.co.uk](http://www.connells.co.uk) | [www.rightmove.co.uk](http://www.rightmove.co.uk) | [www.zoopla.co.uk](http://www.zoopla.co.uk)**

Property Ref: CAR104146 - 0002