



Murray Road, W5

£450,000

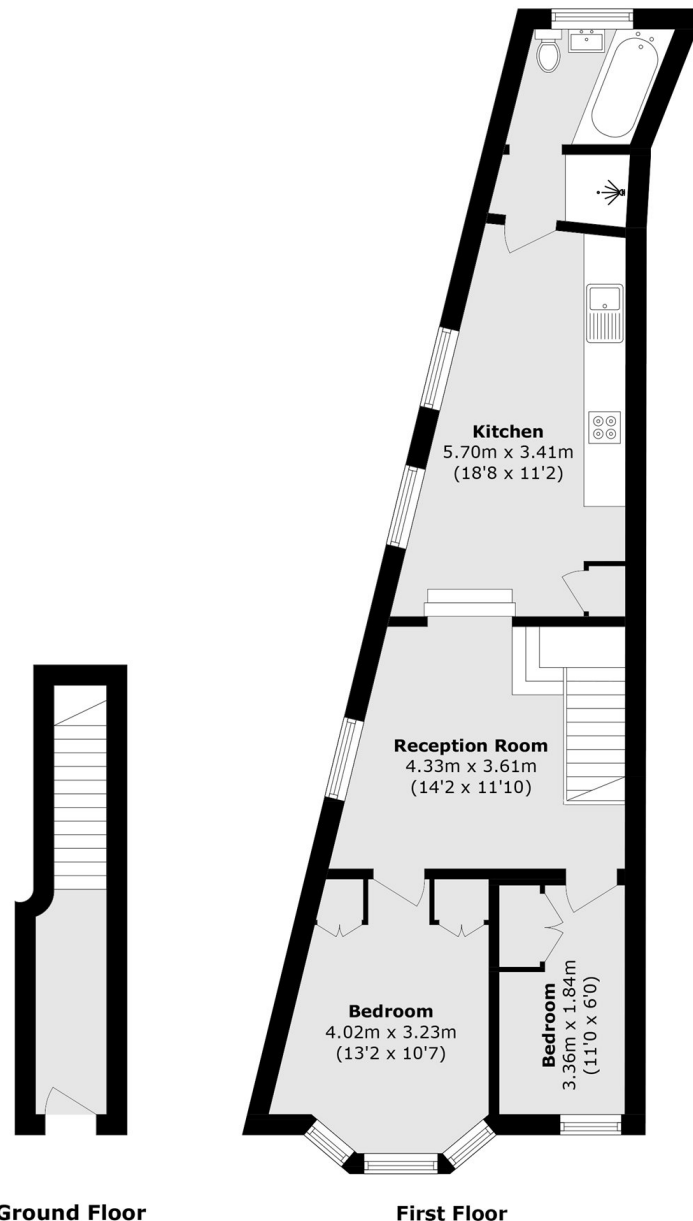
Two bedroom maisonette occupying the first floor of this corner Victorian conversion. Enjoys lots of natural light and offers good condition, ready for a new owner to just move in and unpack. Offered with virtual freehold and no onward chain.

Located in this popular South Ealing area, well-positioned for Brentford and two Piccadilly line stations.

Features

- Two Bedroom Conversion
- Private Entrance
- Long Lease
- Scope to Extend
- Good Condition
- No Onward Chain

Murray Road, London, W5



Ground Floor

First Floor

Total area (approx.): 59.8 sq. m (643.7 sq. ft)