

Lambeth High Street, SE1

£2,500 Per calendar month

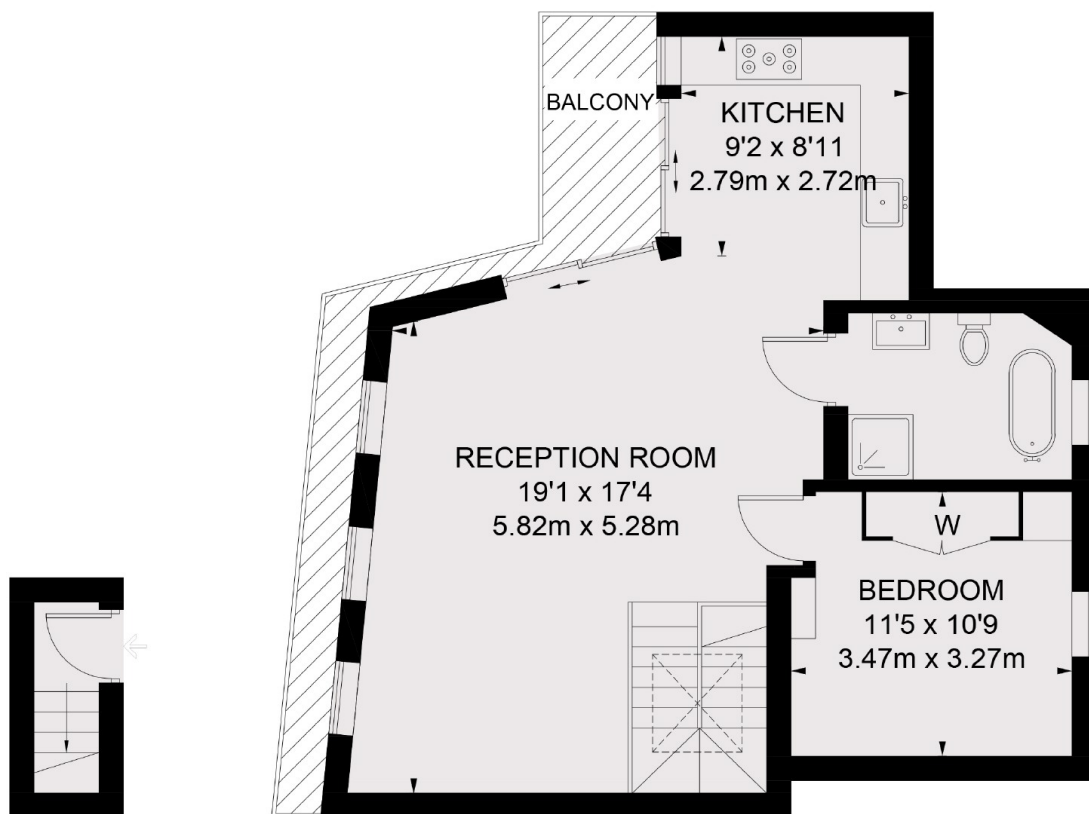
A bright and spacious one double bedroom top floor apartment with a private balcony in a fantastic location. The property has been finished to a high specification throughout and would be perfect for a couple or a single professional.

Ideally located close to the Thames at Albert Embankment which offers a variety of shops, bars and restaurants close by. Both Vauxhall and Lambeth North tube stations are within easy walking distance.

Features

- One Bedroom Apartment
- Private Balcony
- Top Floor Flat
- Wood Floors Throughout
- Modern Bathroom
- Great Central Location

Lambeth High Street, London, SE1



SECOND FLOOR THIRD FLOOR

TOTAL APPROX. FLOOR AREA 668 SQ. FT. (62.1 SQ. M.)

Dexters

Kennington
181 Kennington Lane
London
SE11 4EZ
Lettings
020 7650 5103

Energy Rating: . We aim to make our particulars both accurate and reliable. However they are not guaranteed; nor do they form part of an offer or contract. If you require clarification on any points then please contact us, especially if you're traveling some distance to view. Please note that appliances and heating systems have not been tested and therefore no warranties can be given as to their good working order.

 **RICS** | Regulated
Estate Agent
and Letting Agent

[dexters.co.uk](https://www.dexters.co.uk)