

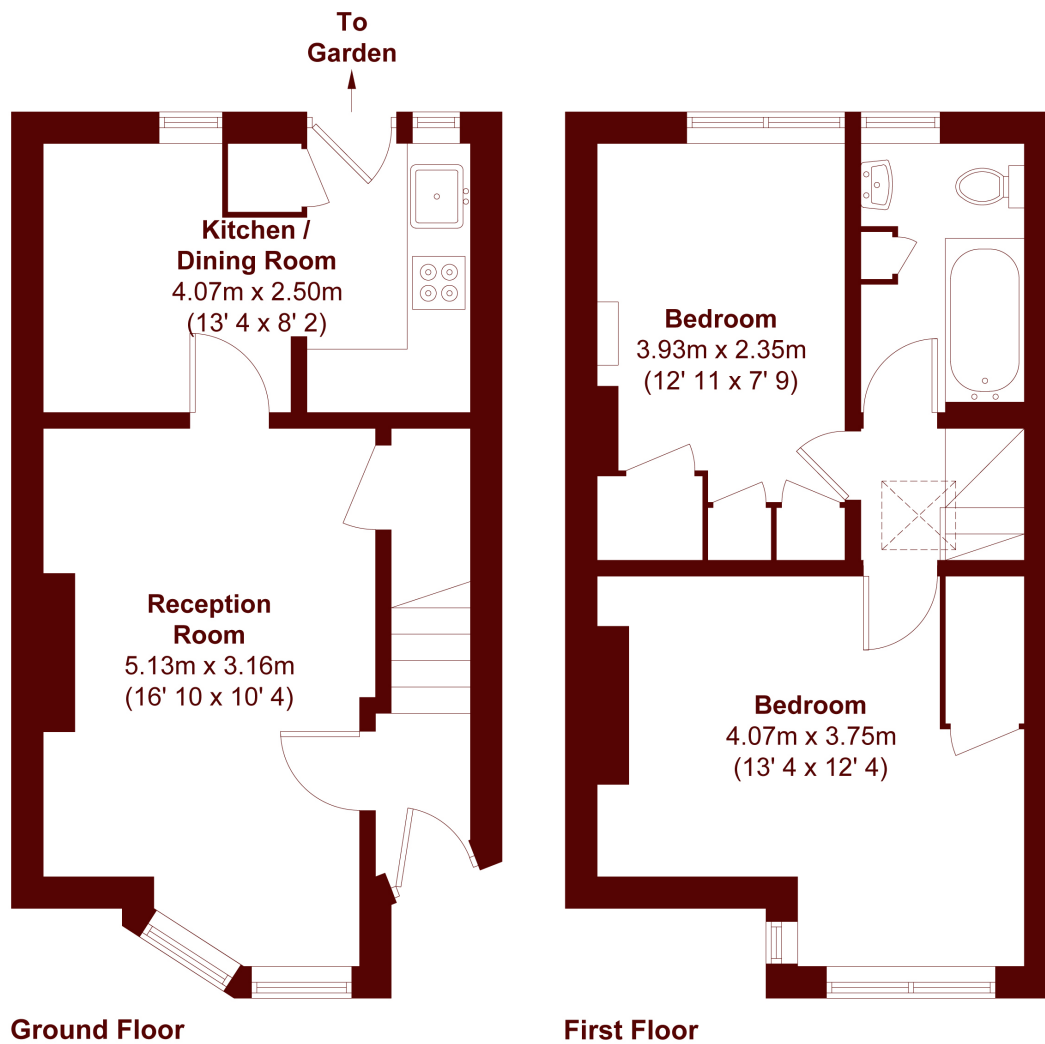


## Derinton Road, SW17

£2,400 pcm



- Two Bedroom
- Terraced
- Immaculately Presented
- Private Garden
- Close to Transport Links
- 641 Sq. Ft.



APPROX. GROSS INTERNAL FLOOR AREA  
641 SQFT / 59.6 SQM

**Marsh & Parsons Tooting**  
29-31 Upper Tooting Road,  
London, SW17 7TS  
020 8767 3655

We aim to make our particulars both accurate and reliable. However, they are not guaranteed; nor do they form part of an offer or contract. If you require clarification on any points then please contact us, especially if you're traveling some distance to view. Please note that appliances and heating systems have not been tested and therefore no warranties can be given as to their good working order.