



**Connells**

Fordington Dairy  
Dorchester



## Property Description

Set within the historic conversion of the former Fordington Dairy Buildings, this exceptional three double bedroom house offers an impressive blend of character, space and contemporary living, all within a secure gated community in the heart of Dorchester. The development was thoughtfully converted in 1999 and now stands as a testament to the areas rich architectural heritage.

The main living accommodation is arranged on the upper floor to make the most of light and space. A superb open-plan living room, dining area and kitchen forms the heart of the home, flooded with natural light from the dual aspect arrangements. The kitchen is fitted with a range of wall and base units, offering both practicality and style while remaining in keeping with the homes character.

The accommodation comprises three well-proportioned double bedrooms, complemented by a family bathroom. Each room continues the theme of exposed beams and period detailing, creating a warm yet spacious feel throughout.

Externally, the home benefits from a low-maintenance patio garden, ideal for outdoor seating and entertaining, along with an allocated parking space within the gated community. This property requires viewing to appreciate all it has to offer!

## Ground Floor

### Entrance Hall

The front door leads into the entrance hall

with stairs to the first floor, a radiator, an understairs cupboard and doors to the bathroom and the three bedrooms.

### Bedroom 1

A door from the entrance hall leads into bedroom 1 with a radiator and double glazed window to the front aspect.

### Bedroom 2

A door from the entrance hall leads into bedroom 2 with a radiator and a double glazed window to the rear aspect.

### Bedroom 3

A door leads from the entrance hall into bedroom 3 with a radiator, a television aerial socket and a double glazed window to rear aspect.

### Bathroom

A door leads from the entrance hall into the bathroom with a WC, a wash hand basin, a heated towel rail, a bath with a shower over and an extractor fan.

## First Floor

### Open Plan Living Space

Stairs lead up from the entrance hall to the

open plan living space comprising of a generous lounge with dual aspect windows to the front and rear aspects, a radiator, wooden beams to the ceiling and open to fitted kitchen.

## Kitchen

The fitted kitchen comprises of a range of wall and base units with worksurfaces over, a breakfast bar with space for stools, a 1 1/2 bowl stainless steel sink and drainer, an integrated electric oven with a gas hob, space and plumbing for a washing machine and a dishwasher, space for a fridge freezer, a radiator and the central heating boiler.

## Outside Space

## Front Garden

The gated front garden has areas laid to gravel and to patio, with steps leading up to the front door.

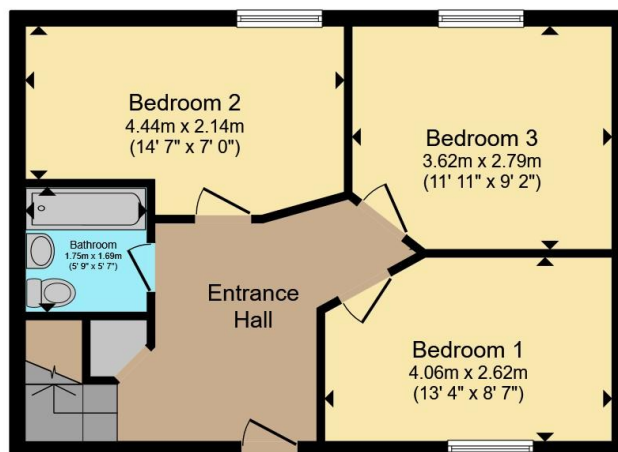
## Parking

The property benefits from an allocated parking space.









**Ground Floor**



**First Floor**

Total floor area 94.5 m<sup>2</sup> (1,017 sq.ft.) approx

This floor plan is for illustrative purposes only. It is not drawn to scale. Any measurements, floor areas (including any total floor area), openings and orientation are approximate. No details are guaranteed, they cannot be relied upon for any purpose and they do not form part of any agreement. No liability is taken for any error, omission or misstatement. A party must rely upon its own inspection(s). Powered by [www.propertybox.io](http://www.propertybox.io)



To view this property please contact Connells on

**T 01305 266 755**

**E [Dorchester@connells.co.uk](mailto:Dorchester@connells.co.uk)**

3 High West Street  
DORCHESTER DT1 1UH

EPC Rating: D Council Tax  
Band: D

Tenure: Freehold

**view this property online [connells.co.uk/Property/DCH309698](http://connells.co.uk/Property/DCH309698)**



1. MONEY LAUNDERING REGULATIONS Intending purchasers will be asked to produce identification documentation at a later stage and we would ask for your co-operation in order that there will be no delay in agreeing the sale. 2. These particulars do not constitute part or all of an offer or contract. 3. The measurements indicated are supplied for guidance only and as such must be considered incorrect. Potential buyers are advised to recheck measurements before committing to any expense. 4. We have not tested any apparatus, equipment, fixtures, fittings or services and it is in the buyers interest to check the working condition of any appliances.

Connells Residential is registered in England and Wales under company number 1489613, Registered Office is Cumbria House, 16-20 Hockliffe Street, Leighton Buzzard, Bedfordshire, LU7 1GN. VAT Registration Number is 500 2481 05.

**See all our properties at [www.connells.co.uk](http://www.connells.co.uk) | [www.rightmove.co.uk](http://www.rightmove.co.uk) | [www.zoopla.co.uk](http://www.zoopla.co.uk)**

Property Ref: DCH309698 - 0007