



## PALACE GARDENS TERRACE, W8

£1,850,000

Two Bedrooms  
Raised Ground Floor  
Split-Level  
Approved Planning Permission  
Dual Aspect  
Prime Kensington

@marshandparsons  
marshandparsons.co.uk

MARSH &  
PARSONS

# ABOUT THE PROPERTY

A unique opportunity to purchase a striking split-level two-bedroom apartment on one of Kensington's best addresses.

Palace Gardens Terrace is a beautiful tree-lined street in prime Kensington and located moments from the amenities of Kensington Church Street, Notting Hill Gate and Kensington High Street. The green open spaces of Kensington Gardens and Hyde Park are within a short walk with the transport links at both Kensington High Street (District and Circle Line) and Notting Hill Gate (District, Circle and Central Line).

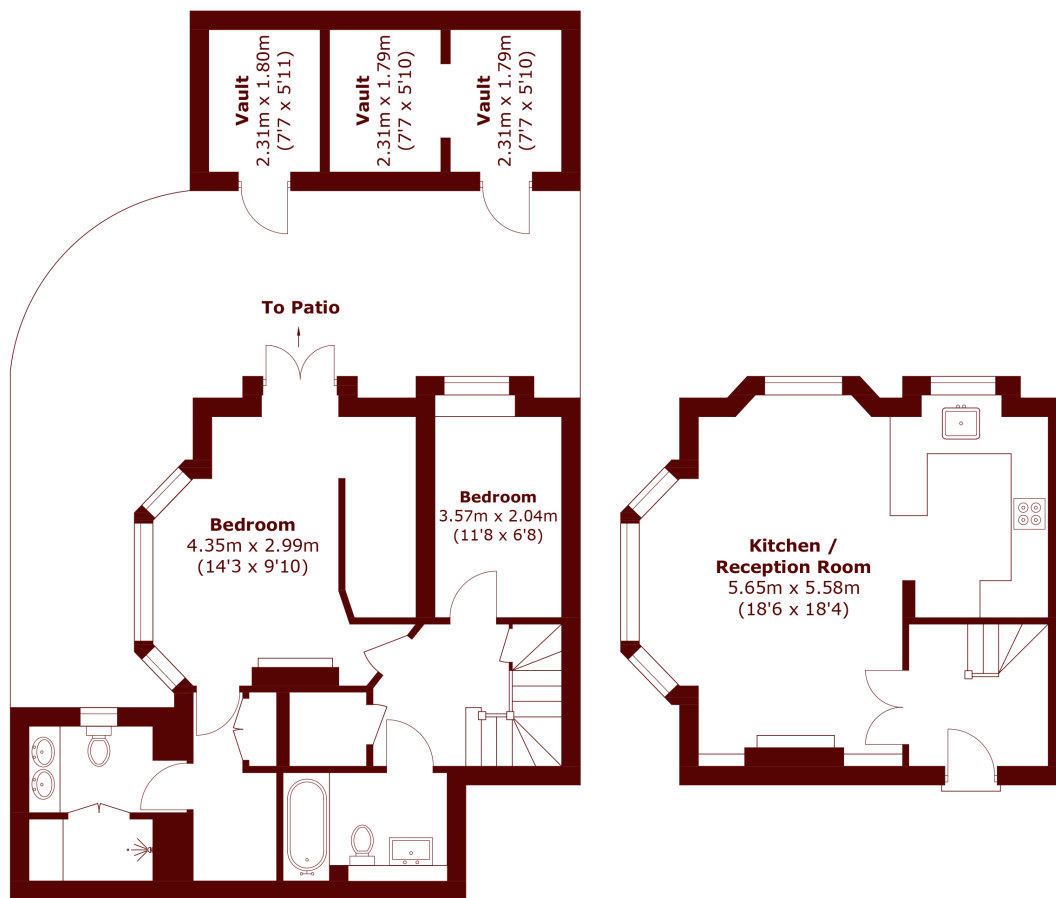








# STEP INSIDE PALACE GARDENS TERRACE



**Lower Ground Floor**

**Upper Ground Floor**

Total area (approx.): 86.4 sq. m (930.1 sq. ft)  
Vault: 13.3 sq. m (143.1 sq. ft)

**Kensington**  
020 7368 4450

Energy Rating: D We aim to make our particulars both accurate and reliable. However, they are not guaranteed; nor do they form part of an offer or contract. If you require clarification on any points then please contact us, especially if you're traveling some distance to view. Please note that appliances and heating systems have not been tested and therefore no warranties can be given as to their good working order

**MARSH &  
PARSONS**