



Edgware Road, W2

£1,200,000

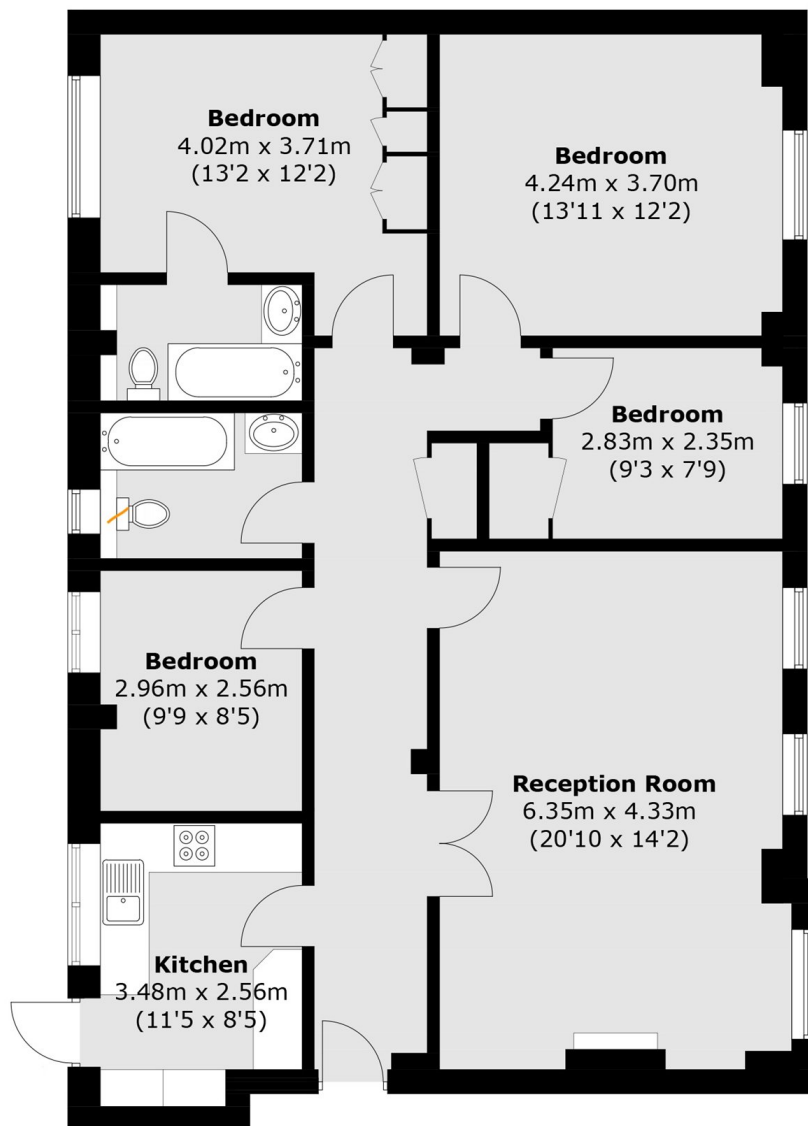
A four bedroom apartment in a portered, purpose built block (with lift). The property has a spacious double reception with wooden floors, a feature fireplace and room to dine. The separate kitchen is well-equipped and there's a family bathroom and an en suite for the principal bedroom.

Grosvenor Court Mansions is moments from the green open spaces of Hyde Park, Marble Arch and the vibrant amenities of Queensway. The area offers excellent transport links via nearby London Underground stations, alongside a wide selection of cafés, restaurants, and boutique shops.

Features

- Four Bedrooms
- Two Bathrooms
- Spacious Reception
- Porter
- Lift
- Marble Arch

Edgware Road, London, W2



Second Floor

Total area (approx.): 108.1 sq. m (1163.6 sq. ft)