



Streatham High Road, SW16

£325,000

A beautifully presented one bedroom apartment set within a popular modern development in Streatham Hill.

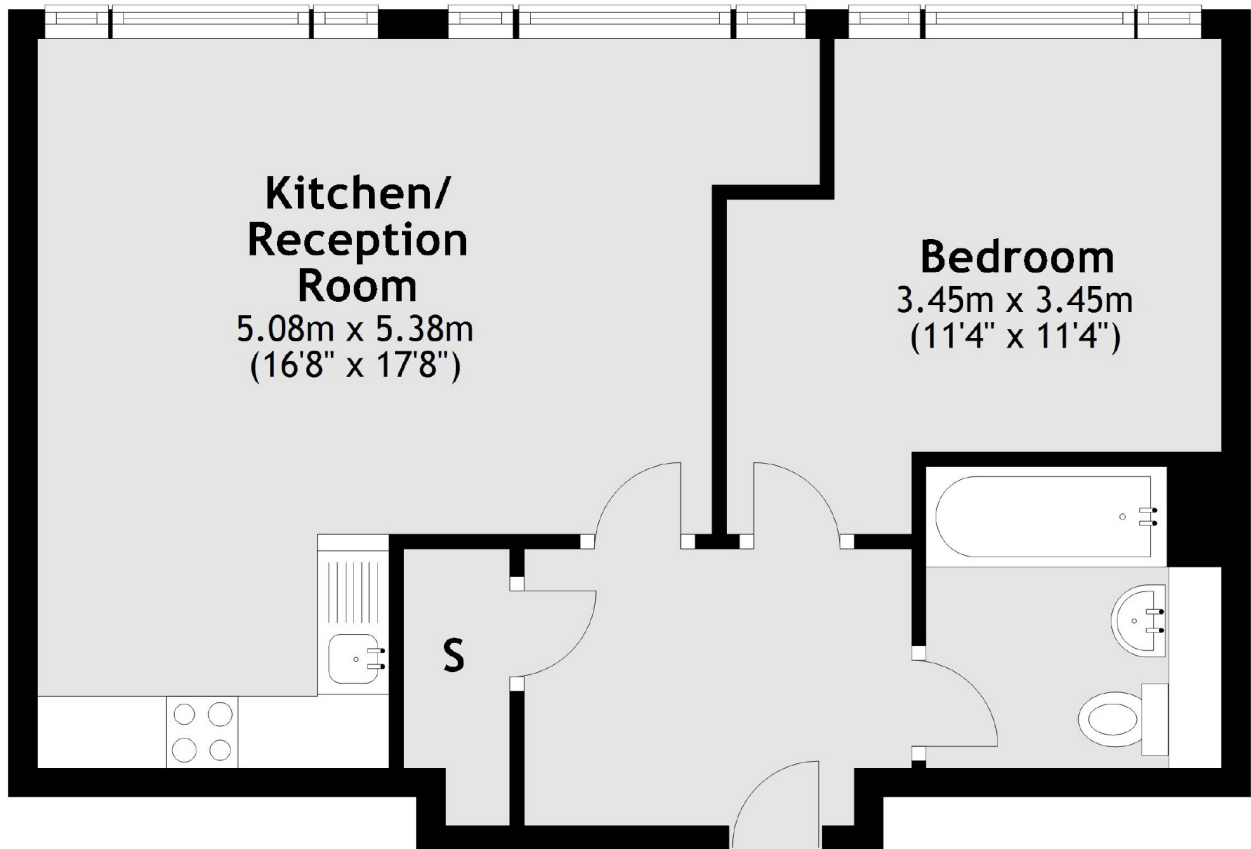
- One Bedroom
- Great Condition
- Desirable Location
- Ground Floor Flat
- Long Lease
- Good Connections



Norwich House is just 0.1 miles from Streatham Hill station providing regular services into London Bridge, London Victoria, Balham and Clapham Junction. There are buses running in to Central London via Brixton. The local amenities include independent pubs, bars, restaurants, coffee shops, Fitness First gym and Odeon Cinema.



Ground Floor



Total area: approx. 45.9 sq. metres (493.8 sq. feet)

Jacksons Streatham
1-3 De Montfort Parade
Streatham High Road
Streatham
London
SW16 1BU

Energy Rating: C We aim to make our particulars both accurate and reliable. However they are not guaranteed; nor do they form part of an offer or contract. If you require clarification on any points then please contact us, especially if you're traveling some distance to view. Please note that appliances and heating systems have not been tested and therefore no warranties can be given as to their good working order.