



## Fulham Palace Road, SW6

£3,000 Per calendar month

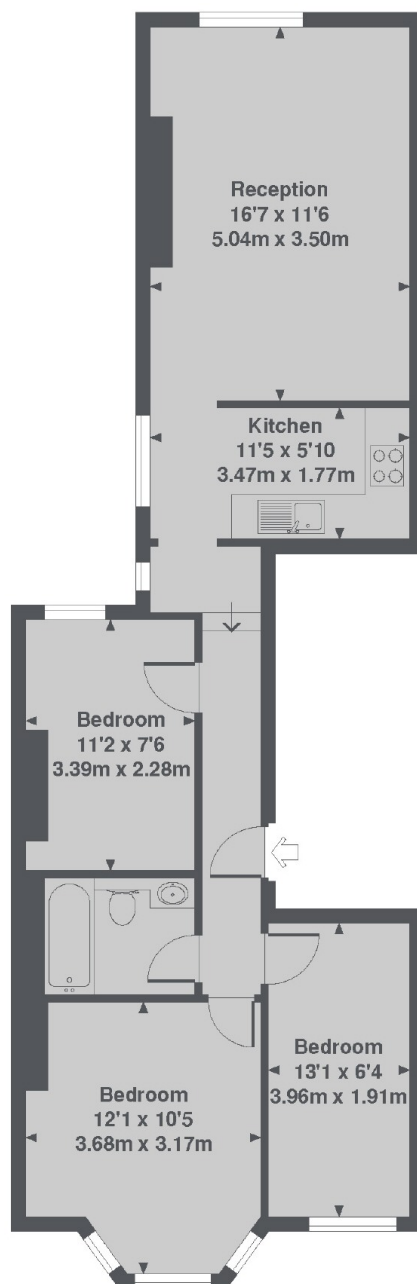
This spacious first floor flat on Fulham Palace Road is ideally located close to all local amenities and offers excellent transport links. This property has a semi open-plan kitchen/living area, three double bedrooms and a family bathroom.

Putney Bridge tube station is close by in addition to many bus routes into the city, Putney and Hammersmith. There is a selection of local amenities, restaurants and cafés on Fulham Road and Fulham high street. Bishops Park is also moments away from the property.

### Features

- Three Double Bedrooms
- Semi Open-Plan
- Integrated Kitchen
- Period Property
- Good Storage
- Well Located

# Fulham Palace Road, Fulham, SW6



Fulham Palace Road, SW6  
Total Approx. Floor area 649 Sq. Ft. (60.3 Sq. M.)