



Green Park, Chatteris, Cambs, PE16 6DL

Semi Detached Bungalow - 2 Bedrooms - Kitchen & Lounge/Diner - Enclosed Rear Garden - Driveway parking - Call To View (01354) 696700

£190,000



Entrance Hall
Ramp up to the double glazed entrance door, laminate flooring, radiator, storage cupboard, airing cupboard and doors to:

Kitchen
2.61m (8'7") max x 2.61m (8'7")
Fitted with a matching range of base and eye level units with worktop space over, stainless steel sink, plumbing for washing machine, space for fridge/freezer, electric point for cooker and double glazed window to front.

Lounge/Diner
4.88m (16') max x 3.46m (11'4")
Double glazed window to front, fireplace and laminate flooring.

Bedroom 1
3.93m (12'11") x 3.31m (10'10")
Double glazed window to rear and radiator.

Bedroom 2
2.63m (8'8") x 2.61m (8'7")
Double glazed windows and door to lean to and radiator.

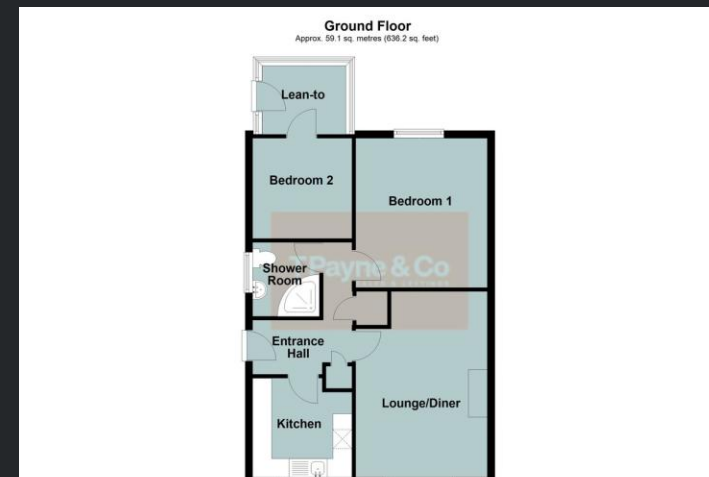
Lean-to
UPVc built lean to with tiled flooring and door to garden.

Shower Room
Fitted with three piece suite comprising corner shower enclosure, pedestal wash hand basin with fully tiled walls and low-level WC, double glazed window to side and tiled flooring.

Outside
The property has a front garden laid to gravel and shrubs with off road parking and a ramp leading up to the entrance door.

A side gate gives access to the enclosed rear, low maintenance garden which is laid to patio with timber shed and pergola.

EPC Rating: D



Call to arrange a viewing **01354 696700** **T Payne & Co**
SALES & LETTINGS

Agents Notes: Whilst every care has been taken to prepare these sales particulars, they are for guidance purposes only. All measurements are approximate and for general guidance purposes only and whilst every care has been taken to ensure their accuracy, they should not be relied upon and potential buyers are advised to recheck the measurements.