

## 217 Umberslade Road Selly Oak, B29 7SG

Fantastic 6 Bed 6 Bath property.

Inclusive of all bills  
£4170pcm  
£695pppcm  
£160ppw

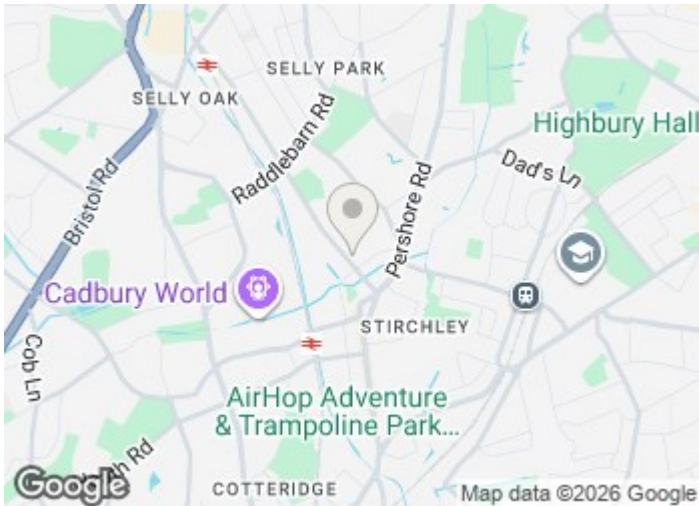
Modern property, Must See

EPC: D  
Tax: B  
Deposit: £801 per person

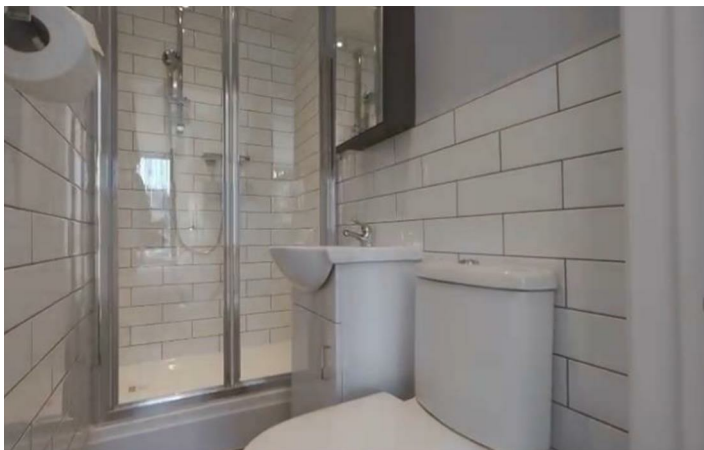
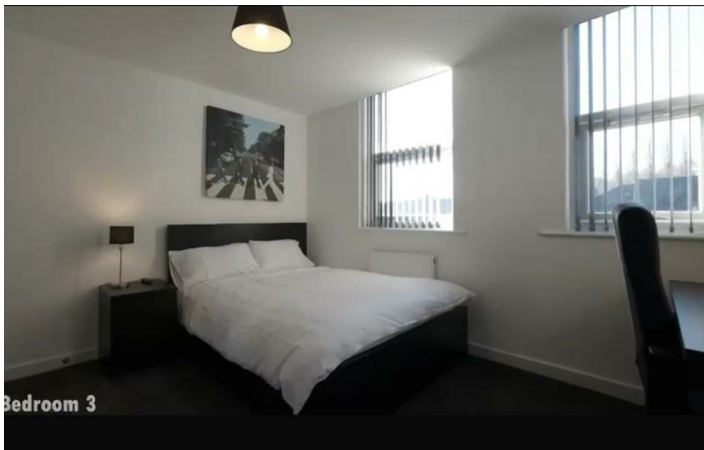
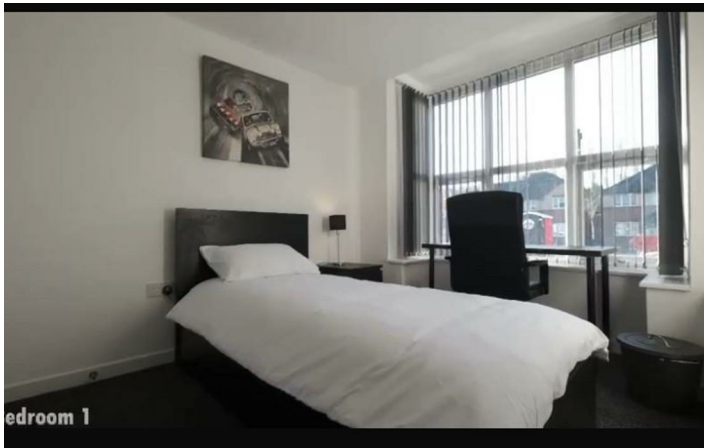
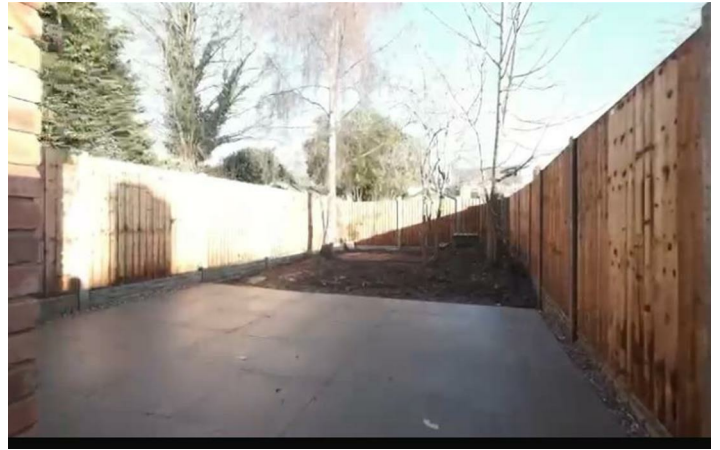
**£4,170 Per Week**

# 217 Umberslade Road

Selly Oak, B29 7SG

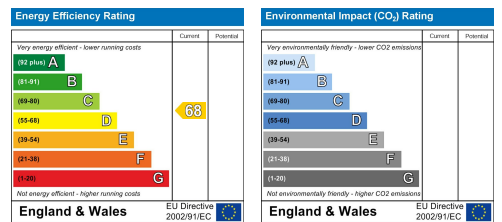


[Directions](#)



# Floor Plan

These particulars, whilst believed to be accurate are set out as a general outline only for guidance and do not constitute any part of an offer or contract. Intending purchasers should not rely on them as statements of representation of fact, but must satisfy themselves by inspection or otherwise as to their accuracy. No person in this firm's employment has the authority to make or give any representation or warranty in respect of the property.



543 Bristol Road, Selly Oak, Birmingham B29 6AU. T: 0121 472 3331 Website: [www.direct-housing.co.uk](http://www.direct-housing.co.uk)  
E-mail: [sellyoak@direct-housing.co.uk](mailto:sellyoak@direct-housing.co.uk) [lettings@direct-housing.co.uk](mailto:lettings@direct-housing.co.uk) [accounts@direct-housing.co.uk](mailto:accounts@direct-housing.co.uk)

