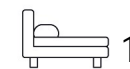




Living  
made  
better

Sky Studios

North Woolwich, E16 2JG



Asking Price £265,000

# Sky Studios, North Woolwich, E16 2JG

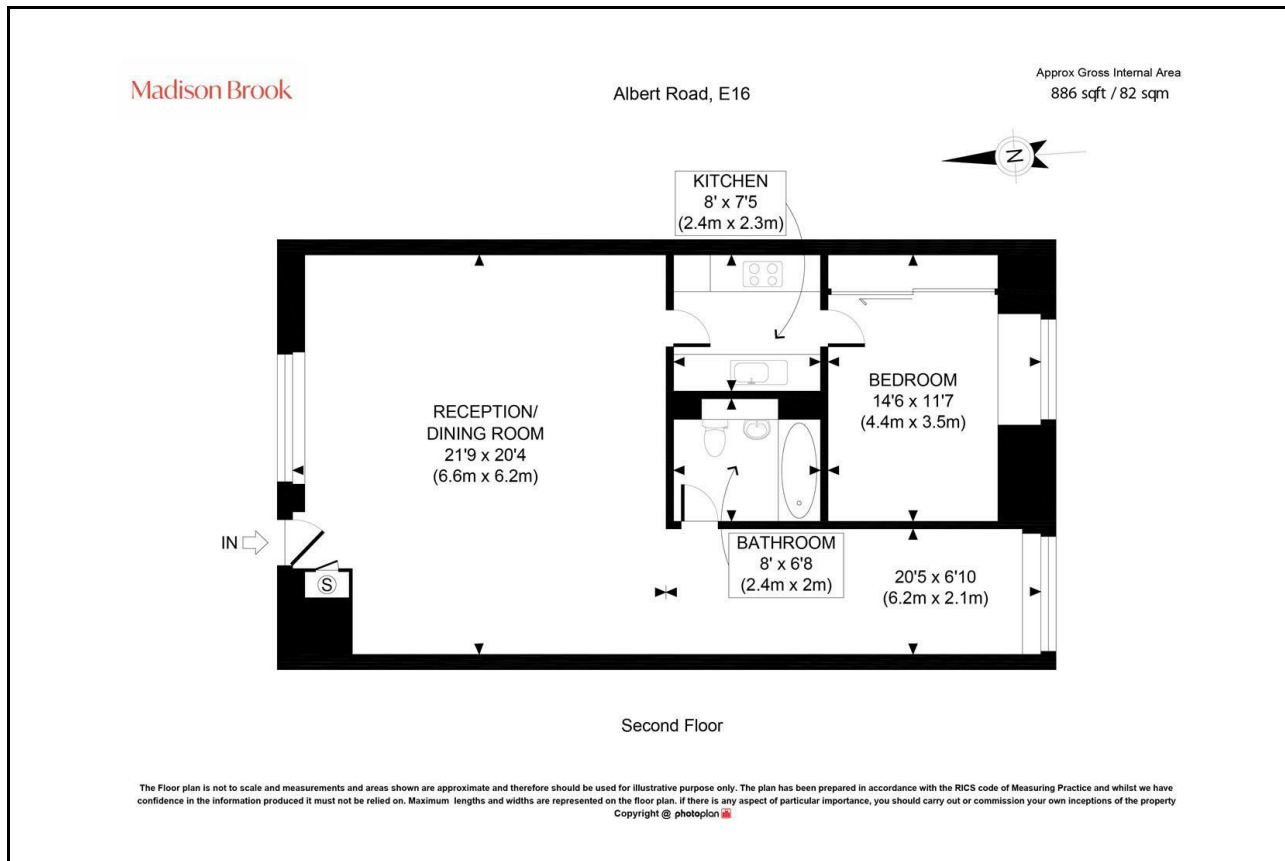
Madison Brook

## Property Summary

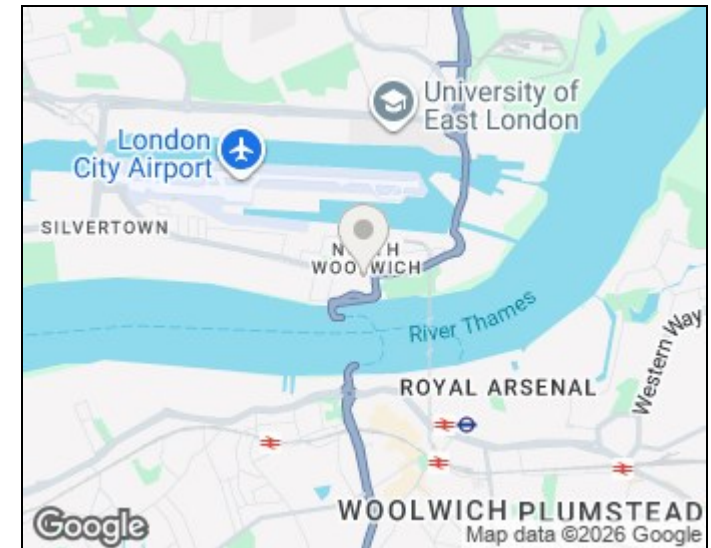
A beautifully presented and unusually spacious one-bedroom apartment of approximately 886 sq. ft., located on the second floor of the popular Sky Studios development in E16. The property boasts a superb 21ft reception/dining room, separate kitchen, generous double bedroom, modern bathroom and secure gated parking. Offering exciting potential to convert into a two-bedroom apartment (subject to any necessary consents), this chain-free home is perfect for first-time buyers, professionals and investors. Ideally situated close to King George V DLR, Royal Victoria Gardens and the Thames, with excellent connections to Canary Wharf, the City and London City Airport.

Lease Remaining: 100 years | Service Charge: £4,200pa | Ground Rent: £175pa

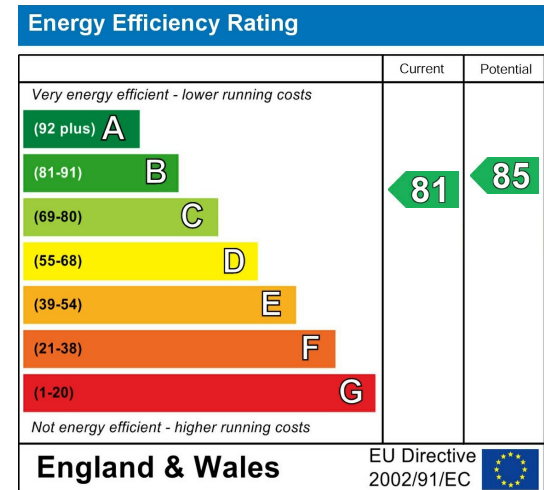
## Floorplan



## Area Map



## Energy Efficiency Graph



These particulars, whilst believed to be accurate are set out as a general outline only for guidance and do not constitute any part of an offer or contract. Intending purchasers should not rely on them as statements of representation of fact, but must satisfy themselves by inspection or otherwise as to their accuracy. No person in this firm's employment has the authority to make or give any representation or warranty in respect of the property.

Unit B 20 Western Gateway, Royal Victoria  
Dock, London, E16 1BS  
Tel: 020 3946 6000 Email:  
docklands@madisonbrook.com  
<https://madisonbrook.com/>