

JOHN BRAY & SONS



65 Marine Court
, St. Leonards-On-Sea, TN38 0DW

Offers In Excess Of £95,000

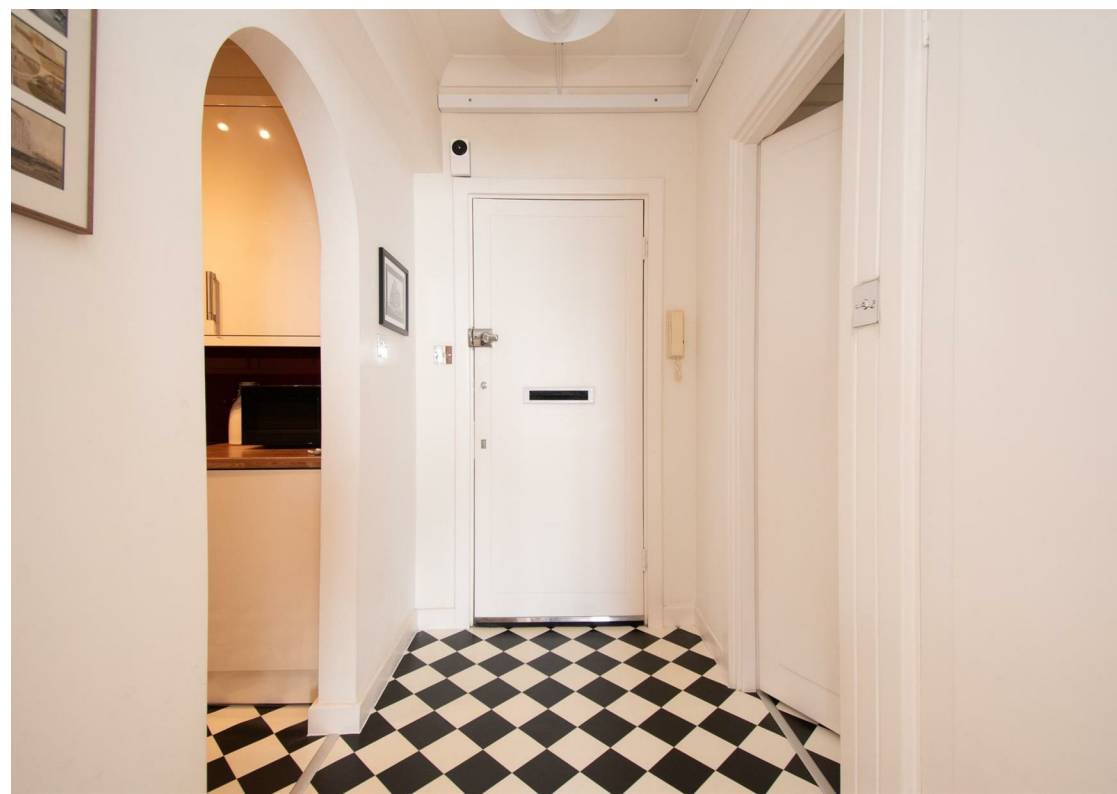


65 Marine Court

, St. Leonards-On-Sea, TN38 0DW

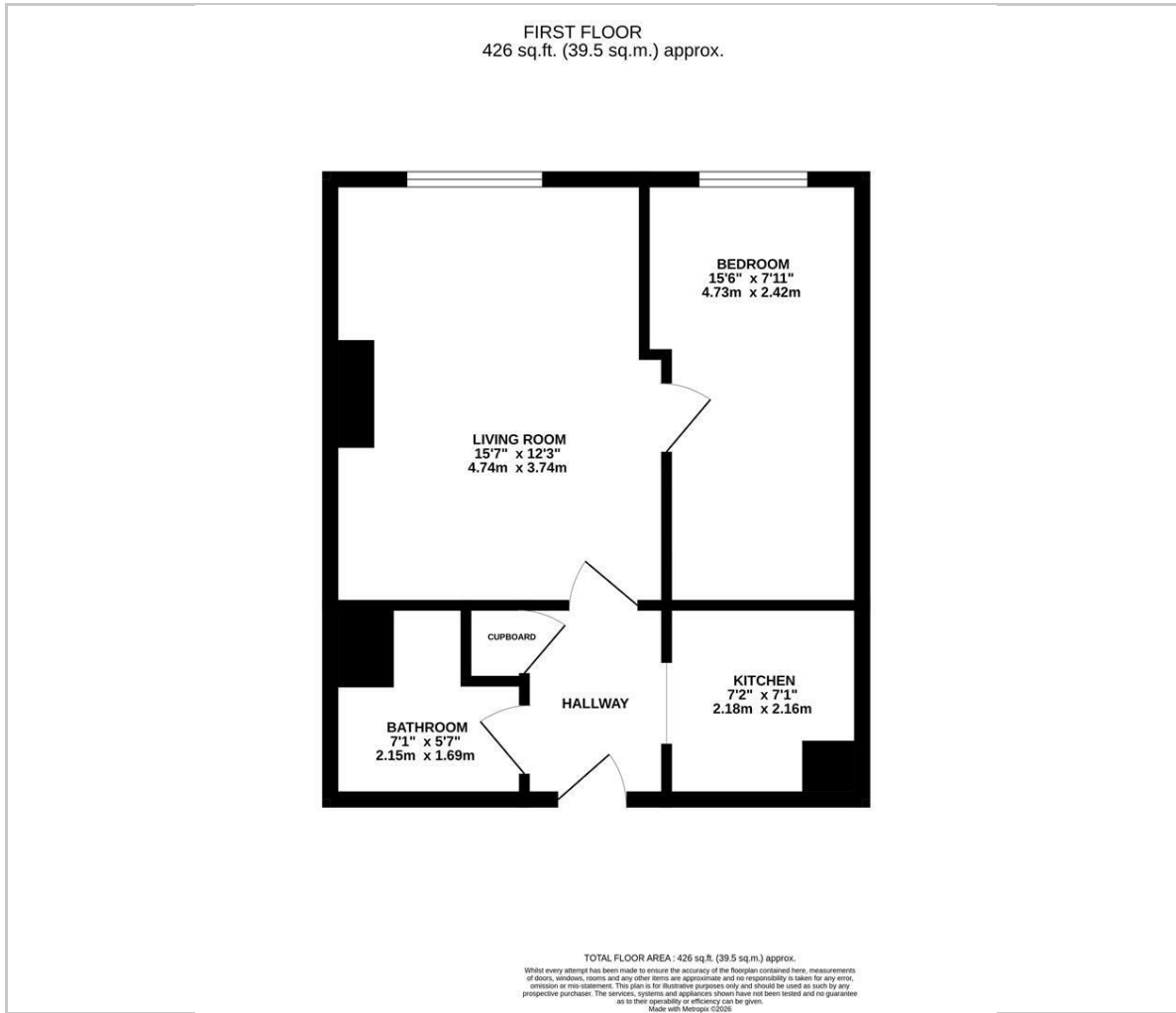
The property: a well presented one bedroom apartment with impressive sea views positioned within the historic St. Leonards landmark, Marine Court. This iconic Grade II listed building is situated within a conservation area and provides a concierge service at reception with an art deco style lift taking you to the fourth floor where the property is located. The accommodation here is accessed through an entrance hall which leads through to a bright living room which measures 15'7 x 12'3 enjoying a Southerly aspect, modern fitted kitchen and bathroom with bath and shower over. The double bedroom is positioned adjacent to the living space. Being sold with a long lease and share of freehold.

The location: Positioned on the Marina with the beach just across the road where there is a local sailing club. The property is ideally placed amongst independent shops, eateries and galleries, enjoying the vibrant scene around Norman Road and Kings Road. Within 0.5 miles of St Leonards Warrior Square mainline train station offering direct connections to London and Brighton.





Floor Plan



Viewing

Please contact our John Bray Hastings Sales Office on 01424 421544 if you wish to arrange a viewing appointment for this property or require further information.

These particulars, whilst believed to be accurate are set out as a general outline only for guidance and do not constitute any part of an offer or contract. Intending purchasers should not rely on them as statements of representation of fact, but must satisfy themselves by inspection or otherwise as to their accuracy. No person in this firm's employment has the authority to make or give any representation or warranty in respect of the property.

72 High Street, Hasting, East Sussex, TN34 3EL
Tel: 01424 421544 Email: enquiries@johnbrayandsons.com www.johnbrayandsons.com

Area Map



Energy Efficiency Graph

