

EMSLEY  MAVOR
ESTATE AGENTS

...your home is where our heart is

Union Terrace
, York, YO31 7ES
£300,000



Union Terrace

, York, YO31 7ES

STYLE - Beautiful Two Bedroom Apartment

HIGHLIGHTS - Modern Second Floor Apartment in great location!

THREE WORDS - City Centre Living!

Luxury Living in York's Heart!

Welcome to 2 Chapel Apartments, Union Terrace, York, where modern elegance meets city convenience. This beautiful two-bedroom first-floor apartment is the epitome of luxury city living, nestled just a stone's throw away from the vibrant heart of York. Perfect for those who crave the buzz of city life yet desire a tranquil retreat to call home.

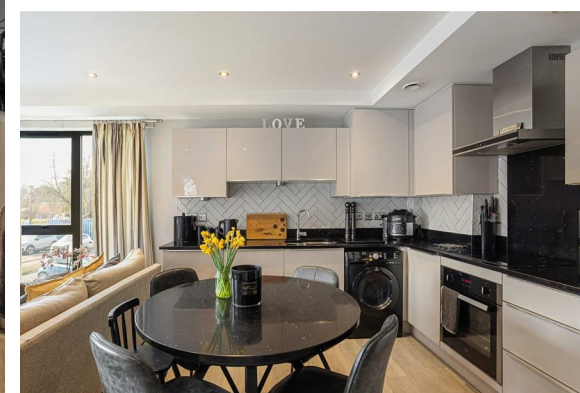
Step inside to a light-filled entrance hallway that sets the tone for the rest of this exquisite property. The open-plan living kitchen is a masterpiece of contemporary design, featuring high-quality internal fittings and integral appliances that make cooking a joy. The sitting area is tastefully decorated, offering a perfect space for relaxation or entertaining guests.

The main bedroom is a sanctuary of comfort, complete with an ensuite that promises privacy and convenience. A second double bedroom provides ample space for guests or a versatile home office. The main bathroom is elegantly appointed, ensuring every aspect of this home exudes sophistication.

Residents of Chapel Apartments benefit from a communal entrance with a state-of-the-art video entry phone system, ensuring both security and ease of access. A lift conveniently serves the upper floors, making daily life that much simpler. For those with vehicles, the underground car park offers a secure, allocated parking space, a rare find in such a central location.

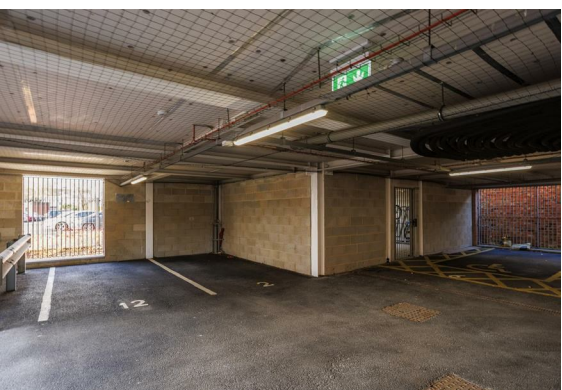
This apartment is more than just a home; it's a lifestyle. With the city's amenities just a short stroll away, you'll have the best of York at your doorstep. Don't miss out on the opportunity to make this luxurious apartment your own. Contact Emsley Mavor Estate Agents today to arrange a viewing and step into your new life of luxury in York.

Some of the marketing images have been digitally enhanced using AI technology to showcase the property's potential and possible future appearance.

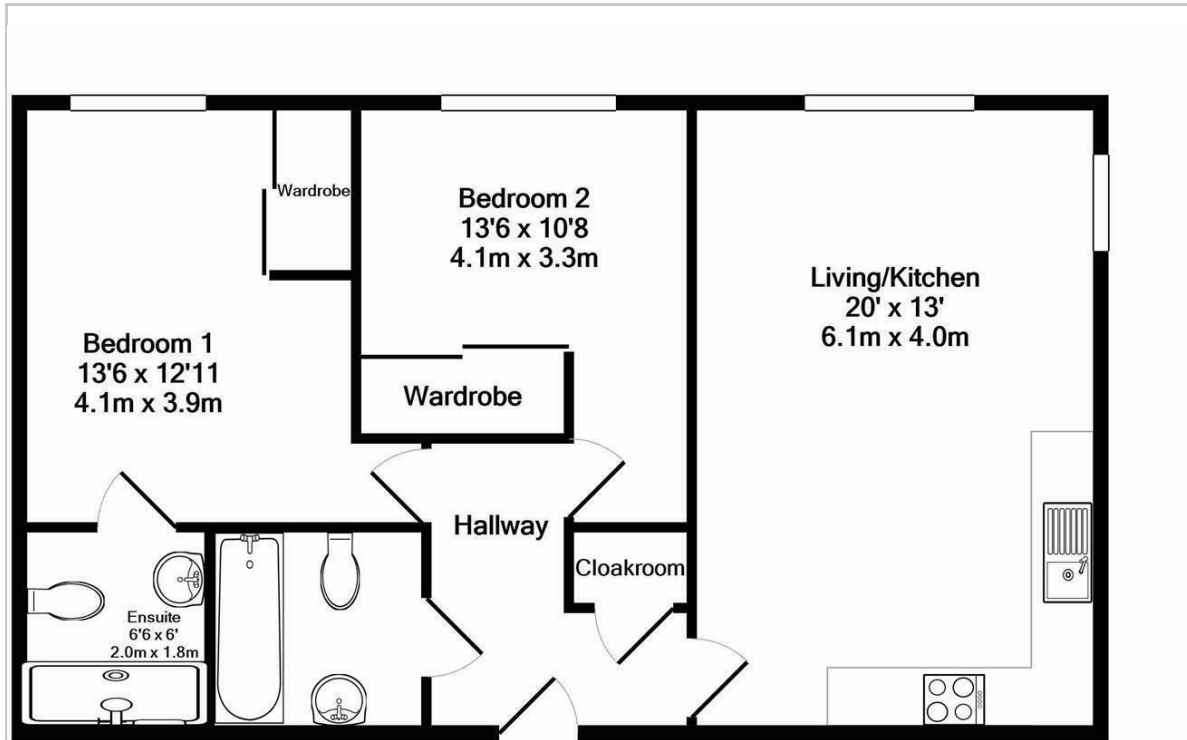




These images are for illustrative purposes only and should not be relied upon as an exact representation of the property in its current state.



Floor Plan



Total Approx. Floor Area 687 Sq.Ft. (63.9 Sq.M.)

Whilst every attempt has been made to ensure the accuracy of the floor plan contained here, measurements of doors, windows, rooms and any other items are approximate and no responsibility is taken for any error, omission, or mis-statement. This plan is for illustrative purposes only and should be used as such by any prospective purchaser. The services, systems and appliances shown have not been tested and no guarantee as to their operability or efficiency can be given

Made with Metropix ©2021

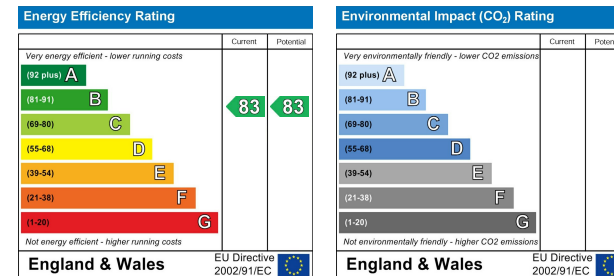
Viewing

Please contact our Emsley Mavor Estate Agents Office on 01347823579 if you wish to arrange a viewing appointment for this property or require further information.

Area Map



Energy Efficiency Graph



These particulars, whilst believed to be accurate are set out as a general outline only for guidance and do not constitute any part of an offer or contract. Intending purchasers should not rely on them as statements of representation of fact, but must satisfy themselves by inspection or otherwise as to their accuracy. No person in this firm's employment has the authority to make or give any representation or warranty in respect of the property.

1 Tollbooth Building Market Place, Easingwold, North Yorkshire, YO61 3AB
Tel: 01347823579 Email: info@emsleymavor.co.uk <http://emsleymavor.co.uk>