



Rosaline Road, SW6

£1,000,000

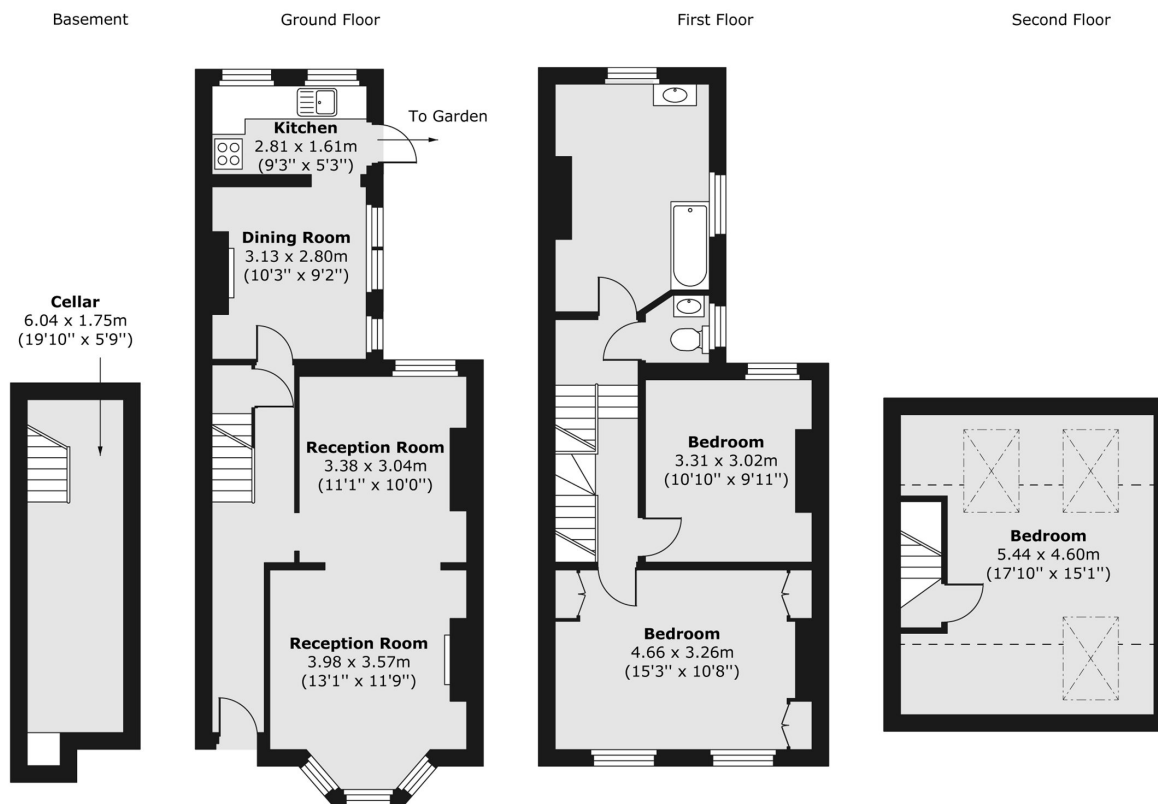
A three double bedroom period house on a quiet residential street. The property has a large double fronted reception room, with separate kitchen and access onto private outside space. The property has potential to renovate throughout.

The property is within close proximity to the amenities and transport links of Munster Village. The house has good transport links near Fulham Broadway, West Brompton and Parsons Green.

Features

- Three Double Bedrooms
- Potential To Extend
- Double Reception Room
- Private Garden
- Separate Kitchen
- Residential Street

Rosaline Road, London, SW6



Total area (approx.) 128.77 sq. m (1,386 sq. ft)

Dexters

Parsons Green
656 Fulham Road
London
SW6 5RX
Sales
020 7731 5115

Energy Rating: E. We aim to make our particulars both accurate and reliable. However they are not guaranteed; nor do they form part of an offer or contract. If you require clarification on any points then please contact us, especially if you're traveling some distance to view. Please note that appliances and heating systems have not been tested and therefore no warranties can be given as to their good working order.

 **RICS** | Regulated
Estate Agent
and Letting Agent

[dexters.co.uk](https://www.dexters.co.uk)