



OFFERS IN EXCESS OF
£485,000
Sumner Road
London, SE15 5QS

GARETH
JAMES

PROPERTY SUMMARY

Nestled within the vibrant heart of Peckham, this stylish abode finds its home in a converted pub, epitomizing trendy urban living. Spread across two chic levels, boasting lofty ceilings and two bathrooms for added convenience, this residence exudes modern charm.

2



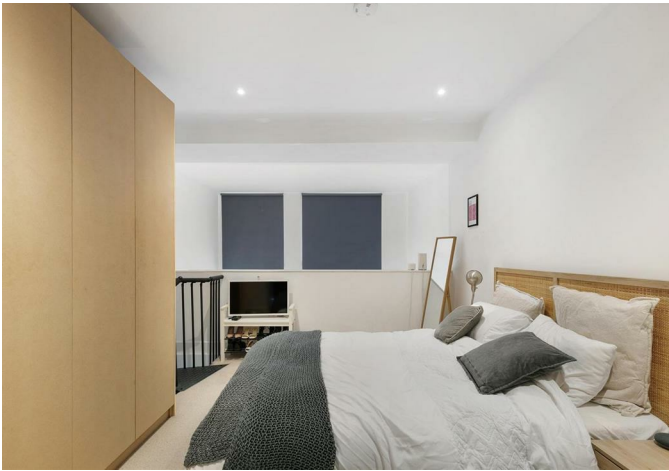
2



1











Sumner Road, SE15
 Approximate Gross Internal Area:
 59.48 SQ.M / 640 SQ.FT

KEY: CH = Chilling Heights
 [Restricted Floor Height]

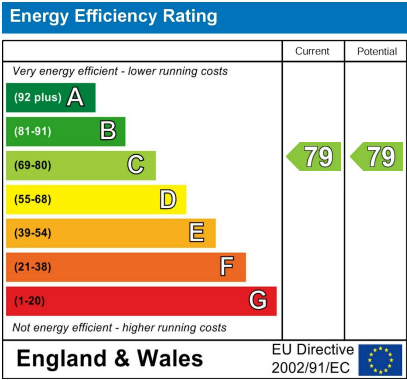
GARETH JAMES

Illustration for identification purposes only. Not to scale.
 Floor Plan Drawn According To RICS Guidelines.

2

2

1



Agents Note: Whilst every care has been taken to prepare these particulars, they are for guidance purposes only. All measurements are approximate and are for general guidance purposes only and whilst every care has been taken to ensure their accuracy, they should not be relied upon and potential buyers/tenants are advised to recheck the measurements

GARETH JAMES

OFFICE ADDRESS
 129 Bellenden Road
 London
 SE15 4QY

OFFICE DETAILS
 02077324330
 sales@garethjames.com
<https://www.garethjames.com/>