



Malden Road, NW5

£650,000

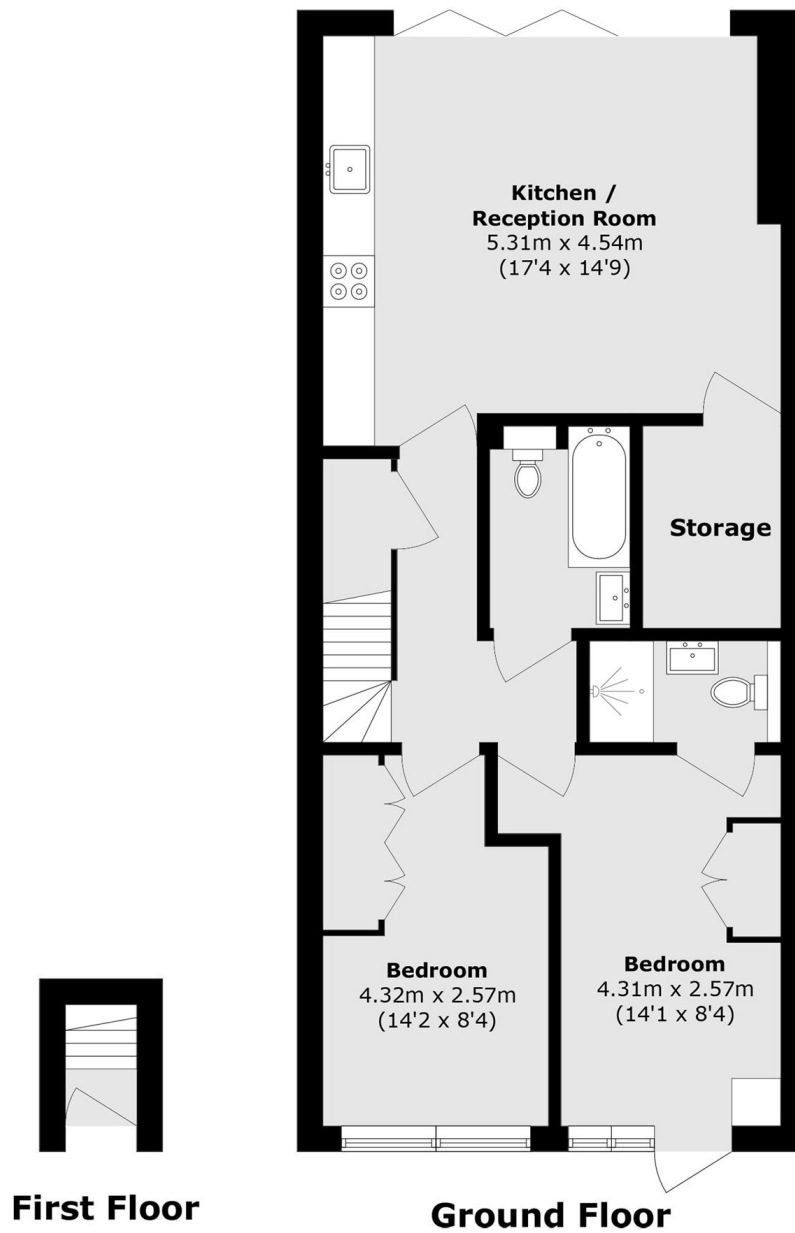
Set within a period conversion is this well-presented two double bedroom, two bathroom apartment with an open plan reception room/kitchen, high ceilings, great natural light and a large secluded garden.

Malden Road is conveniently located off Prince of Wales Road, the nearest tube station being Chalk Farm (Northern line) and also close to Kentish Town West overground station, local bus services, shops & cafés.

Features

- Two Double Bedrooms
- Two Bathrooms
- Leasehold
- Private Garden
- Chain Free
- Great Location

Malden Road, London, NW5



Total area (approx.): 68.7 sq. m (739.5 sq. ft)