



*Jordan fishwick*

Oaks Avenue Hayfield High Peak



## Oaks Avenue Hayfield High Peak SK22 2JU

Price £470,000



### The Property

Situated at the head of a cul de sac adjoining countryside and a stream, a well proportioned detached bungalow. Standing on a larger than average plot with stunning gardens to three sides in the ever popular Hayfield. Briefly comprising; entrance hall, living room, dining room, conservatory, kitchen, three double bedrooms, shower room and separate wc. With garage, driveway parking and substantial gardens this property offers scope to extend (subject to planning) and offers the additional benefit of no onward chain.



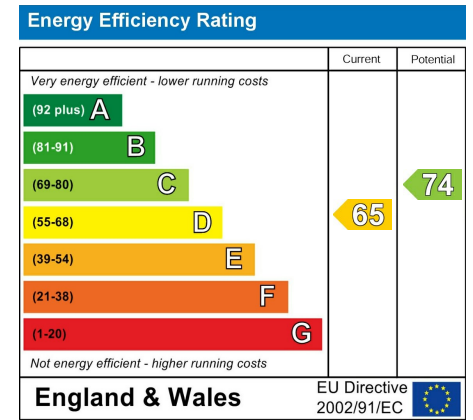
- Detached Bungalow on a Superb Plot
- Three Double Bedrooms
- Two Receptions Plus Conservatory
- Cul de Sac Location
- Garage and Driveway Parking
- Backing onto a Stream and Farmland
- Idyllic Location in Picturesque Hayfield

**Postcode** SK22 2JU

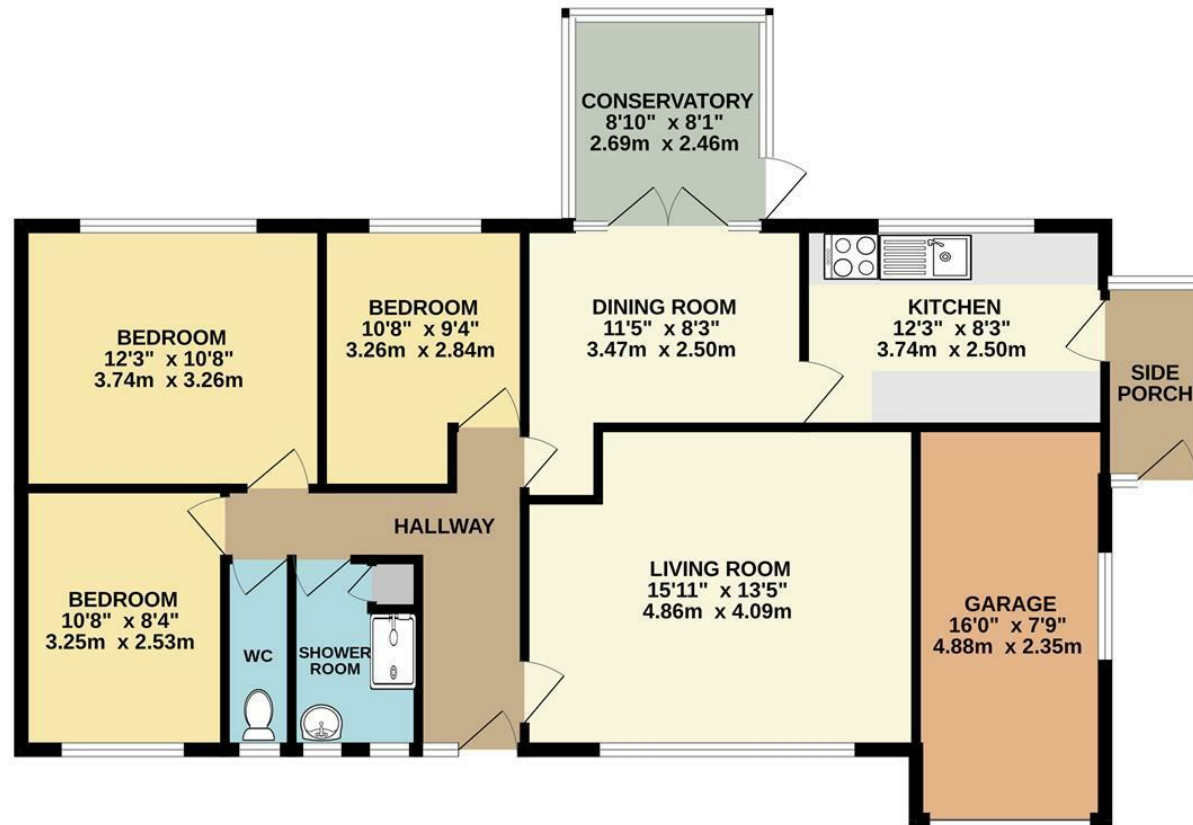
**EPC Rating** D

**Local Authority** High Peak

**Council Tax** D



## GROUND FLOOR



Whilst every attempt has been made to ensure the accuracy of the floorplan contained here, measurements of doors, windows, rooms and any other items are approximate and no responsibility is taken for any error, omission or mis-statement. This plan is for illustrative purposes only and should be used as such by any prospective purchaser. The services, systems and appliances shown have not been tested and no guarantee as to their operability or efficiency can be given.  
Made with Metropix ©2025



These particulars are believed to be accurate but they are not guaranteed and do not form a contract. Neither Jordan Fishwick nor the vendor or lessor accept any responsibility in respect of these particulars, which are not intended to be statements or representations of fact and any intending purchaser or lessee must satisfy himself by inspection or otherwise as to the correctness of each of the statements contained in these particulars. Any floorplans on this brochure are for illustrative purposes only and are not necessarily to scale.

Offices at: Chorlton, Didsbury, Disley, Hale, Glossop, Macclesfield, Manchester Deansgate, Manchester Whitworth Street, New Mills, Sale, Wilmslow and Withington

14 Market St, Disley, Cheshire, Stockport SK12 2AA

01663 767878

disley@jordanfishwick.co.uk

www.jordanfishwick.co.uk